

# NORTH DEVON THEATRES

MAY • JUNE • JULY • AUGUST

2013



Queen's Theatre Barnstaple Landmark Theatre Ilfracombe North Devon Museum Barnstaple



## COMEDY

<b>Boxed In</b> Thurs 9 May	p7
<b>The Reduced Shakespeare Company</b> Tues 21 May	p10
<b>The LumberJacks</b> Fri 24 May	p11
<b>Matt Parker is The Number Ninja</b> Tues 28 May	p13
<b>Charley's Aunt</b> Sun 2 June	p15
<b>Lucy Porter</b> Sat 15 June	p20
<b>The Real Inspector Hound</b> Fri 21 June	p20
<b>Jethro</b> Thurs 1 Aug	p27
<b>Joe Pasquale</b> Sat 17 Aug	p29
<b>Up Pompeii</b> Sun 18 & Sat 31 Aug	p29

## POETRY/TALKS

<b>Folly</b> Thurs 6 June	p17
------------------------------	-----

## DANCE

<b>Queen of the Dance</b> Sat 11 May	p9
<b>Verve 13</b> Fri 14 June	p19
<b>Dance 2013</b> Sat 6 July	p23
<b>Destination Dance 2013</b> Sat 27 July	p27

## DRAMA

<b>Go Back For Murder</b> Mon 29 April to Sat 4 May	p5
<b>Boxed In</b> Thurs 9 May	p7
<b>Miss Julie</b> Fri 10 May	p8
<b>This House</b> Thurs 23 May	p11
<b>Freddy Dare and the Ginger Robber</b> Sat 1 June	p14
<b>AUBADE (OH BAD!)</b> Sat 1 June	p14
<b>Charley's Aunt</b> Sun 2 June	p15
<b>Tiddler and Other Terrific Tales</b> Mon 17 & Tues 18 June	p20
<b>The Real Inspector Hound</b> Fri 21 June	p20
<b>Fringe TheatreFest</b> Thurs 20 to Sun 23 June	p21
<b>Up Pompeii</b> Sun 18 & Sat 31 Aug	p29

## FAMILY

<b>Freddy Dare and the Ginger Robber</b> Sat 1 June	p14
<b>Tiddler and Other Terrific Tales</b> Mon 17 & Tues 18 June	p20
<b>Pilton Community College Presentation Evening</b> Thurs 27 June	p22
<b>The Wiz</b> Fri 5 & Sat 6 July	p23
<b>Young Stars of the Future</b> Sat 20 July	p25
<b>The Ugly Duckling</b> Sun 11 Aug	p28
<b>Treasure Island</b> Fri 16 Aug	p28
<b>Sea Ifracombe Maritime Festival</b> Sat 7 & Sun 8 Sept	p31
<b>Sleeping Beauty</b> Sat 14 Dec to Sat 4 Jan	p32

## EDUCATION

<b>Rock On</b> Fri 7 June	p34
<b>Verve 13 workshops</b> Thurs 13 June	p34
<b>The Wiz</b> Fri 5 & Sat 6 July	p23
<b>Street Dance Workshops</b> Wed 31 July & Thurs 1 Aug	p34
<b>Lee Club</b> Mon 5 to Thurs 8 Aug	p34
<b>Family Theatre Drama Workshop - Ugly Duckling</b> Sun 11 Aug	p34
<b>Family Theatre Drama Residency - Treasure Island</b> Mon 12 to Fri 16 Aug	p35
<b>AcroCircus</b> Mon 19 to Wed 21 Aug	p35
<b>CarnaDrama - Go with the Flo</b> Tues 3 to Sat 7 Sept	p35
<b>Creative Dance and Technique Residency</b> Mon 28 Oct to Fri 1 Nov	p35

## MUSIC

<b>Beer &amp; Music Festival</b> Fri 3 to Mon 6 May	p6
<b>Shakatak</b> Wed 8 May	p6
<b>Mugenkyo Taiko Drummers</b> Sat 11 May	p8
<b>Queen of the Dance</b> Sat 11 May	p9
<b>That'll Be The Day</b> Thurs 23 May	p11
<b>Beyond the Barricade</b> Fri 31 May	p15
<b>The Searchers</b> Thurs 6 June	p17
<b>One Night of Queen</b> Fri 7 June	p17
<b>Tubular Bells</b> Fri 28 June	p22
<b>Black Voices</b> Thurs 4 July	p23
<b>Rock 'n' Roll Paradise</b> Fri 12 July	p25
<b>Young Stars of the Future</b> Sat 20 July	p25
<b>It's Showtime</b> Sun 28 Jul & Sun 4 Aug	p27
<b>Complete Madness</b> Fri 2 Aug	p27
<b>The Stones</b> Fri 9 Aug	p29
<b>Sunwest Festival</b> Fri 23 to Mon 26 Aug	p29
<b>Abba Reunion</b> Thurs 29 Aug	p31
<b>Back to Broadway</b> Fri 30 Aug	p31

## CLASSICAL

<b>Tom Poster with North Devon Sinfonia</b> Fri 17 May	p10
<b>Lunchtime Classical Concert</b> Fri 24 May	p11

## BLUES

<b>The Blues Band</b> Fri 10 May	p7
<b>Skip 'Little Axe' McDonald</b> Wed 12 June	p18

## JAZZ

<b>Kit Downes Quintet</b> Tues 7 May	p6
<b>Oriole and Basquiat Strings</b> Wed 22 May	p10
<b>Ginger Baker's Jazz Confusion</b> Fri 14 June	p19

## FOLK

<b>Karine Polwart</b> Thurs 16 May	p9
<b>Kieran Goss</b> Wed 29 May	p13
<b>Wizz Jones</b> Wed 26 June	p20

## WORLD

<b>Ginger Baker's Jazz Confusion</b> Fri 14 June	p19
---	-----

<b>Future Events</b>	p33
----------------------	-----

## MUSICAL

<b>Fame - The Musical</b> Thurs 16 to Sat 18 May	p9
<b>Judy &amp; Liza</b> Thurs 13 June	p18
<b>The Wiz</b> Fri 5 & Sat 6 July	p23
<b>The Wedding Singer</b> Wed 10 to Sat 13 July	p25

## VARIETY

<b>The Golden Age of Music Hall</b> Tues 11 & Wed 12 June	p18
<b>Paul Stockman</b> Sat 13 July	p25

## EXHIBITIONS

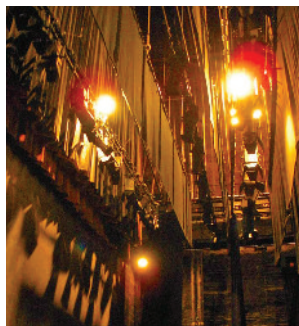
<b>Art Trek</b> 6 to 21 July	p24
<b>Sue Giblett</b> 8 April to 27 May	p36
<b>Joe Mitchell</b> 15 April to 25 May	p36
<b>Pete Caswell</b> 27 May to 1 July	p36
<b>Silver Halide Photographic Group</b> 27 May to 6 July	p36
<b>Jill Denton and Sandy Campbell</b> 1 Jul to 12 Aug	p36
<b>Roger Ford</b> 12 Aug to 23 Sept	p36
<b>James Ravilious</b> 27 April to 22 June	p36
<b>Harry Juniper - 66 years a Potter</b> 29 June to 22 July	p36
<b>The Arts of Art</b> 27 July - 6 Sept	p36

Major funders &amp; sponsors

Supported using public funding by  
**ARTS COUNCIL ENGLAND**

## Backstage Tours

£5.00 per person  
Free to Members & Supporters



### Backstage Tour Dates

#### Queen's Theatre

Tues 7 May  
Sat 8 June\*  
Tues 2 July

\*On Saturday 8th June our Programme Director, Alan Dodd, will be on hand for a post-tour discussion about how we plan and schedule our programme.

#### Landmark Theatre

Wed 15 May  
Mon 17 June  
Wed 17 July

All the tours will commence at 10.30am.

They last approximately 1 hour and will include complimentary tea, coffee or soft drink.

Please contact the Box Office to book your place.


We can accommodate group visits, on request, on alternative dates.

## NDT Members and Supporters Events

Go Back for Murder post-show reception is open to non-members  
All other events are exclusive to Members & Supporters

Every season we offer a range of special events and discounts for our Members and Supporters. To join the Membership Scheme turn to page 38 or use our website quicklink [www.ndtt.org.uk/members](http://www.ndtt.org.uk/members)

### Special Members' deals

 Always look for the Members' symbol to find exclusive offers

#### Go Back for Murder

Free first-night drinks  
Mon 29 April

Exclusive to NDT Supporters.  
Meet the cast at a drinks reception after the performance.

Please book in advance with the Box Office.

Post-show reception  
Wed 1 May

Open to NDT Supporters, Members & the general public.

Come along and meet the cast after the evening performance.

£7.50 per person to include complimentary drink plus light canapés. Book your tickets through the Box Office. We advise you to book early as these evenings tend to sell very quickly.

#### Museum

Midsummer opening  
Fri 21 June 6pm

NDT Supporters & Members are invited to join the Museum of Barnstaple and North Devon alongside their VIP guests to celebrate their Midsummer opening.

This evening also offers a last chance to see the third and final Ravillious exhibition.

Please RSVP to the Museum on 01271 34 67 47



The sign of a true Theatre lover


## STEP BACK IN TIME TO UNCOVER THE TRUTH...

BILL KENWRIGHT  
BY SPECIAL ARRANGEMENT WITH AGATHA CHRISTIE LTD PRESENTS

THE OFFICIAL  
*Agatha Christie*  
THEATRE COMPANY



AGATHA CHRISTIE'S  
**GO BACK FOR MURDER**

Mon 29 April to Sat 4 May, eves 7.45pm, Thurs & Sat mat 2.30pm Queen's Theatre   
stalls/dress circle £23.00 (£22.00), m £21.00, upper circle £21.00 (£20.00), m £19.00, matinee £16.00, m £14.50

Now in its eighth thrilling year, the Agatha Christie Theatre Company presents a brand new production of the queen of crime's classic time piece Go Back for Murder.

Carla Le Marchant has to live with a disturbing family secret; her mother, Caroline Crale, died in prison while serving life for killing her husband.

But on finding a letter in which Caroline claims that she's innocent, Carla becomes obsessed, determined to clear her mother's name.

Enlisting the help of Justin Fogg, the son of Caroline's defense lawyer, Carla tracks down a number of people from her mother's tragic past, only to uncover a shocking truth...

Suspects, secrets, and suspense abound in this new production starring: Liza Goddard, Sophie Ward, Robert Duncan, Gary Mavers, Lysette Anthony and Ben Nealon.

Meet the cast: see page 4 for full details.

Running time approx 2hrs

[www.ndtt.org.uk/murder](http://www.ndtt.org.uk/murder)

THE EIGHTH  
THRILLING  
PRODUCTION

"A COMPANY  
THAT CLEARLY  
UNDERSTANDS  
AND LOVES  
CHRISTIE'S  
WORK"  
THE EXPRESS

"AGATHA  
CHRISTIE  
REMAINS THE  
QUEEN OF CRIME  
AND THIS  
COMPANY HAS  
DONE HER  
PROUD"  
THE ARGUS

DRAMA



Tues 7 May, 8pm Gallery Café **JAZZ**

**G** **14**

£11.00, m £10.00, under 25s/stu/yp £5.00



## Kit Downes Quintet

**Kit Downes:** piano  
**Calum Gourlay:** bass  
**James Maddren:** drums  
**James Allsopp:** bass clarinet  
**Lucy Railton:** cello

Kit Downes, former pianist in the band Empirical, is one of the most highly regarded rising stars of the UK jazz scene. His 2009 album *Golden*, with the Kit Downes Trio, was shortlisted in 2010 for a Mercury Award and has won him great critical acclaim from the national press and jazz reviewers.

Their second album, *Quiet Tiger*, was released in 2011, and was voted no. four in Jazzwise's *Albums of the Year 2011*.

'world-class'  
John Fordham, *The Guardian*

Running time  
approx 2hrs 5mins

[www.ndtt.org/downes](http://www.ndtt.org/downes)

Fri 3 to Mon 6 May Landmark Theatre free admission

**MUSIC**

## Beer & Music Festival

Here's a suggestion that we think you'll like, this bank-holiday weekend, why not avoid all the May Day traffic and mayhem and



[www.ndtt.org/festival](http://www.ndtt.org/festival)

pop over to Ilfracombe where you can have a chilling weekend listening to great music. With a selection of real ales to quaff on, a feast of food to fill your belly and a superb line-up of free live music, these mini-festivals have become an annual Mecca for pure, relaxed and effortless enjoyment.

Visit our website for the full music line up which includes:  
**The Richard O'Brien Project;**  
**Wille & The Bandits;**  
**Odds & 8 Balls; Zamba; Peter Crawford and Eaten By Sharks.**

Wed 8 May, 7.45pm Queen's Theatre **G** **10** £19.50, m £16.50

**MUSIC**

## Shakatak

For the past 23 years **Shakatak** has been the vanguard of UK soul/funk. Enjoying both high-cult status and instant recognition as a household name, due to their numerous hit recordings including: *Easier Said than Done* and *Night Birds*. For live performances the band consists of the four original members: **Bill Sharpe** (keys), **Jill Saward** (lead

voc, perc & flt), **Roger Odell** (drs) and **George Anderson** (bs gtr), augmented with a guitarist and a backing vocalist/saxophonist.

'...*Shakatak aren't just a band, they were the soundtrack to our lives*'  
Ronnie Scott's House Magazine

Running time approx 2hrs 20mins

[www.ndtt.org/shakatak](http://www.ndtt.org/shakatak)



Thurs 9 May, 8pm studio@QT **G** **9** £11.50 (£10.00), m £7.50, stu/yp £6.00

## Boxed In A Comic Package of Warehouse Life

Boxed In is clown theatre, hilarious and moving in its celebration of dreams over drudgery.

Imagine Buster Keaton directing Laurel & Hardy. Add a dash of the absurd, flying saucers and boxes. Lots and lots of boxes!

Boxed In tells the story of a warehouse, two workers and their obsessions.

Outside, economic catastrophe looms, young people can't find work, food prices rocket, the old see their pensions plummet.

Inside, oblivious, they squabble over who should make the tea.

Dumbfounded when their warehouse world falls apart, they find themselves in a bleak wasteland where they confront, with comic precision, the meaning of life!

'a plot riddled with twists and turns - enough red herrings and

*gasp-shock dénouements to confuse and stun... spot-on clown and physical theatre.'*

Total Theatre on The Deadline

Running time approx 1hr 50mins

[www.ndtt.org/boxed](http://www.ndtt.org/boxed)



**phoenix**  
learning and care  
supporting  
studio@QT

Fri 10 May, 7.45pm Queen's Theatre **G** **8** £19.50, m £17.00

**MUSIC**

## The Blues Band

**Paul Jones**  
**Dave Kelly**  
**Rob Townsend**  
**Gary Fletcher**  
**Tom McGuinness**

The Blues Band was formed in 1979, by ex Manfred Mann group members, Paul Jones and Tom McGuinness. Slide guitar ace and vocalist Dave Kelly

was then recruited, Gary Fletcher filled the bass post and in 1982 Rob Townsend of Family fame replaced Hughie Flint on drums. Their new studio album *Few Short Lines* is collecting rave reviews.

Expect a good selection from the new album in the show, but a lot of classics too.

Running time approx 2hrs 25mins

[www.ndtt.org/blues](http://www.ndtt.org/blues)





Landmark Theatre

NEWS

## The Audience starring Helen Mirren

At the time of going to print, it has only just been announced that there will be a live broadcast of *The Audience* starring **Helen Mirren** on Thurs 13 June (full details on our website).

Part of National Theatre Live – the best of British theatre broadcast live to cinemas and theatres worldwide.

See page 11 for National Theatre Live's encore screening of *This House*.

**National Theatre Live** [www.ndtt.org.uk/audience](http://www.ndtt.org.uk/audience)



DRAMA



DRAMA

Fri 10 May, 8.15pm **Landmark Theatre**

**G**  **14** £14.50 (£12.00), m £10.00, under 25s £9.00, stu/yp £8.00

## Miss Julie by August Strindberg

presented by UK Touring Theatre

Banned in the UK for 50 years when first written, *Miss Julie* shocked critics across Europe with its frank portrayal of sexuality and inter-class relationships in 19th century society. Now widely regarded as Strindberg's masterpiece, its vivid depiction of the class system is still as pertinent today.

Midsummer's Eve, Sweden, 1888. The Count's daughter and his valet cross social and sexual boundaries and must face the consequences.

While the servants' party continues in the barn outside, aristocratic *Miss Julie* is drawn to the kitchen and to the socially ambitious Jean, her father's valet. What starts as a harmless flirtation soon descends into a ferocious power struggle and battle of the sexes, from which neither can escape.

Running time approx 1hr 30mins

[www.ndtt.org.uk/julie](http://www.ndtt.org.uk/julie)

Sat 11 May, 7.45pm **Queen's Theatre** **G**  **5**

stalls/dress circle: £22.00 (£21.00) front stalls/upper circle: £20.50 (£19.50) yp £18.00, family ticket £74.00

## Queen of the Dance

AIR productions, the creative team behind the successful and ever-popular *Moscow Ballet-La Classique*, brings to the stage an electrifying performance of world class dancing with this brand-new



show, *Queen of the Dance*.

**Catherine Gallagher** and her company of international Irish step-dancers create a riveting performance of Irish dance. The *ex-Riverdance*, All Ireland and World Championship dancer will also be accompanied by beautiful live music to enhance the sensational solos.

Running time approx 2hrs

[www.ndtt.org.uk/catherine](http://www.ndtt.org.uk/catherine)



DANCE



MUSIC

Sat 11 May, 8pm **Landmark Theatre** **G**  **6** £19.00 (£17.00), m £15.00, family £64.00

## Mugenkyo Taiko Drummers

Thundering rhythms on huge taiko drums, mysterious masked choreography with inventive lighting, muscular synchronisation timed to perfection, post-apocalyptic martial imagery and infectious belly laugh humour; all in a spellbinding display of sheer athleticism.

Mugenkyo have developed a spectacular passionate style with music for the soul, fusing the

traditional spirit with a contemporary look and sound, creating a modern stage performance that has captivated audiences everywhere.

*'Just when you think it could not get any more powerful, it doubles in intensity...'* Edinburgh Evening News

Running time approx 2hrs

[www.ndtt.org.uk/taiko](http://www.ndtt.org.uk/taiko)

Thurs 16 May, 8.15pm **Landmark Theatre** **G**  **8** £15.50 m £13.50

FOLK

## Karine Polwart

Scottish singer-songwriter Karine Polwart is gifted with one of folk music's purest and most approachable singing voices.

Her talent for crafting unique, enduring melodies, her gift for saying just enough without overstating her case, the range and dynamism of her arrangements, all come together in songs of powerful contemporary relevance. This

year Karine was nominated for three awards at the *BBC Radio 2 Folk Awards: Folk Singer of the Year, Best Album & Best Original Song*.

*'One of the finest singer-songwriters in Britain'* The Guardian

*'Bright vocals and an unflinching social eye'* Observer

Running time approx 1hr 50mins



[www.ndtt.org.uk/karine](http://www.ndtt.org.uk/karine)



[www.ndtt.org.uk/fame](http://www.ndtt.org.uk/fame)

Thurs 16 to Sat 18 May, eves 7pm, Sat mat 2pm **Queen's Theatre** **12** £11.00, rv £9.00

MUSICAL

## Fame - The Musical

This year **Barnstaple Young Generation** will be showcasing the iconic 80s show **Fame**. Performed entirely by local youngsters, aged between 13 and 21, this is the bittersweet but ultimately inspiring story of a diverse group of performing students who have committed

themselves to four years of gruelling artistic and academic work.

With its 80s pop score, this high-energy show explores the issues that confront many young people today.

Running time approx 2hrs 20mins



Fri 17 May, 8pm  
Landmark Theatre

CLASSICAL

G 8

£12.00, under 18s free

## Tom Poster with North Devon Sinfonia



Conductor: Tom Seligman

Internationally recognised pianist, **Tom Poster**, is a player of outstanding artistry and versatility, equally in demand as soloist and chamber musician across an unusually extensive repertoire. Tonight he joins Tom Seligman (English National Ballet, Royal Opera House) as they and the North Devon Sinfonia unleash Rachmaninoff's epic second piano concerto. This concert represents the dawn of a new era for the North Devon Sinfonia following on from their sell out performance of *Carmina Burana* at the Queen's Theatre last year.

Programme to include:  
**Rossini:** William Tell Overture  
**Rachmaninoff:** Piano Concerto No.2 in C minor, Op.18

[www.ndtt.org.uk/poster](http://www.ndtt.org.uk/poster)



COMEDY

Tues 21 May, 7.45pm Queen's Theatre G 14 £16.00 (£15.00), m £14.00, stu/yp £11.00

## The Reduced Shakespeare Company

The Complete Works of William Shakespeare (abridged) (revised)

The Reduced Shakespeare Company are back with an irreverent, fast-paced romp through the Bard's plays, using the same recycled jokes, just put in a different order.

Join these madcap men in tights as they weave their wicked way through all of Shakespeare's comedies, histories and tragedies

in one wild ride that will leave you breathless and helpless with laughter.

*'Pithier than Python. Irresistible.'*  
New York Times  
*'Stupendous, anchorless joy!'*  
The Times

Running time approx 2hrs

[www.ndtt.org.uk/reduced](http://www.ndtt.org.uk/reduced)



JAZZ

Wed 22 May, 8pm studio@QT G 14 £11.00, m £10.00, under 25s/stu/yp £5.00

## Oriole and Basquiat Strings

Oriole: **Jonny Phillips:** Span. gtr, **Ben Davis:** cello, **Seb Rochford:** dms, **Idris Rahman:** sax, **Adriano Adewale:** perc, **Nick Ramm:** p, **Gili Lopez:** el. bs

Basquiat Strings: **Ben Davis:** cello, **Fred Thomas:** bs, **Seb Rochford:** dms, **Graeme Steel:** gtr

Oriole and Basquiat Strings, two of Britain's most popular groups, are touring together for the first time. Their leaders are great friends,

sharing a desire to create fresh, alive music. Borrowing from Brazilian and Spanish traditions, Oriole's beguiling sound is complemented by the jazz and classical influences of Basquiat Strings. The maverick drummer Seb Rochford features in both groups.

*'Utterly persuasive and charming'* MOJO

[www.ndtt.org.uk/oriole](http://www.ndtt.org.uk/oriole)



supporting studio@QT

Thurs 23 May, 7pm Landmark Theatre

G 14

£12.50, m £10.50, stu/yp £7.00

## This House

a new play by James Graham

It's 1974 and the corridors of Westminster ring with the sound of infighting and backbiting as Britain's political parties battle to change the future of the nation, whatever it takes.

James Graham's biting, energetic and critically-acclaimed new play strips politics down to the practical realities of those behind the scenes who roll up their sleeves, and on occasion bend the rules, to manoeuvre a diverse and conflicting chorus of MPs within the Mother of all Parliaments.



DRAMA

This encore cinema screening is part of National Theatre Live – the best of British theatre broadcast to cinemas and theatres worldwide.

National Theatre Live

[www.ndtt.org.uk/house](http://www.ndtt.org.uk/house)



[www.ndtt.org.uk/day](http://www.ndtt.org.uk/day)

Thurs 23 May, 7.45pm Queen's Theatre G 14 £24.00

MUSIC

## That'll Be The Day 2013 Tour

Prepare yourself for a party as the nation's favourite rock 'n' roll variety show, returns by popular demand.

This hugely entertaining rock 'n' roll spectacular features a fantastic line up of knock-out hits from the

50s, 60s and 70s, all mixed with loads of new zany comedy routines to produce a show with a real feel-good party atmosphere.

*'What a great value for money show That'll Be The Day is. Not to be missed!!'* Daily Mail

Running time approx 3hrs



[www.ndtt.org.uk/steele](http://www.ndtt.org.uk/steele)

Fri 24 May, 12.30pm Queen's Theatre G 8 £6.00, under 25s £2.00

CLASSICAL

## Lunchtime Classical Concert

Hilary Boxer, cello Susan Steele, piano

Hilary Boxer and Susan Steele return to perform two favourite contrasting works for cello and piano. The concert aims to raise funds for Dartington (North Devon) Trust Young Musicians' Support.

**Beethoven:** Variations on Mozart: Ein Mädchen oder Weibchen  
**Brahms:** Cello sonata No.1 in E minor Op. 38

Running time approx 55mins



SAVOUR OUR PUB CLASSICS  
*With carefully nurtured cask ales and fine wines.....*



VINTAGE  
 — INNS —

THE BRAUNTON INN  
*A traditional country pub in Barnstaple*

Braunton Road, Barnstaple, EX31 4AX Tel: 01271 816547  
*Why not book your table online, visit:*  
[www.vintageinn.co.uk/thebrauntoninnbarnstaple](http://www.vintageinn.co.uk/thebrauntoninnbarnstaple)

the  
**Mughal  
 Brasserie**

Open 5.30pm - 11.30pm

Newly Refurbished  
 Fully Air Conditioned  
 & Licensed

**Indian, Bangladeshi  
 & Nepalese Food**

Takeaways also available

57 Vicarage Street, Barnstaple EX32 7BT  
 01271 329993 or 01271 329220

THE  
**ROYAL MARINE**  
 Public House & Hotel  
**Tel: 01271 882470**  
[www.theroyalmarine.co.uk](http://www.theroyalmarine.co.uk)

Seaside - Combe Martin - North Devon - EX34 0AW  
 Come and eat at Combe Martin's premier  
 dining and prize winning establishment.

BRITISH PIE AWARDS  
  
  
**No.1**  
 in Combe Martin

and don't forget our  
**carvery!**

Sundays 12.15 to 2.30 and 5.30 to 9ish  
 Wednesdays 5.30 to 9ish

WiFi

Where the Locals Meet and Eat!

THE OLD MILL  
 Traditional Devonshire Freehouse

17<sup>th</sup> Century Inn...

Serving Home Cooked Traditional Dishes & Local Real Ales

- All Fresco dining on outside heated patio
- Summer Barbeques (weather permitting)
- Live Music (Sundays & Wednesdays)
- Carvery (Sundays & Wednesdays)
- NEW Adventure Playground

Fine food, traditional ales and a warm welcome  
**01271 870 237**  
 Located in Woolacombe, EX34 7HJ

Service and times may vary throughout the season



Fri 24 May, 7.45pm Queen's Theatre **G 16** £17.00

Stewart Francis, Craig Campbell & Glenn Wool are...  
**The Lumberjacks**

These three Canadian stand-up comedians perform their hilarious Edinburgh Festival 2012 show. Between them, they have appeared on numerous TV comedy shows including: *Mock The Week*, *8 Out Of 10 Cats*, and *Live At The Apollo*.

**Stewart Francis:**  
*'A veritable barrage of one-liners and perfectly crafted gags.'*

Sunday Times  
**Glenn Wool:**  
*'Effortlessly funny with an affability other comics can only dream of.'*  
 The Guardian  
**Craig Campbell:** *'Bringing a tale to life like a young Billy Connolly.'*  
 Edinburgh Evening News

[www.ndtt.org.uk/lumberjacks](http://www.ndtt.org.uk/lumberjacks)

Tues 28 May, 8pm studio@QT **G 12** £12.00, m £10.00, stu/yp £6.00

**Matt Parker is The Number Ninja**



Direct from BBC Radio 4's *Infinite Monkey Cage*, stand-up mathematician **Matt Parker** takes a hilarious tour through the world of numbers.

Expect everything from debunking number nonsense and flagrant sudoku abuse to the mysterious patterns in the locations of ancient monuments... and defunct Woolworths' stores.

*'Unusual comedy because it's also informative'*  
 Daily Mail

Running time  
 approx 1hr 50mins

[www.ndtt.org.uk/ninja](http://www.ndtt.org.uk/ninja)

phoenix  
 learning and care  
 supporting  
 studio@QT

Wed 29 May, 8pm Gallery Café **FOLK**

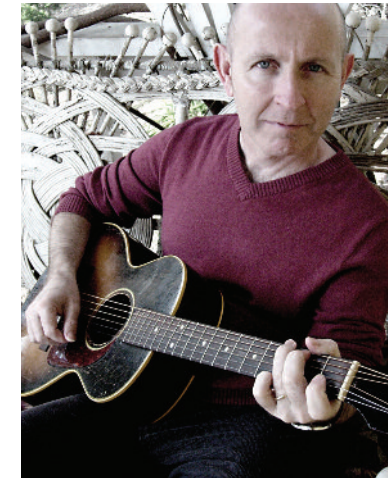
**G 12**  
 £11.00, m £8.00, stu/yp £6.00



**Kieran Goss**

Live and Solo

Following the huge success of his recent special guest appearances with Fairport



Convention and Eddi Reader, **Kieran Goss** returns to the UK to headline his own solo tour.

Long hailed as one of Ireland's leading songwriters and performers, Kieran Goss' music has won him fans across the globe. But if his songs have made him a star, his live shows have made him a legend. Live on stage is where Kieran Goss really shines.

This is a rare chance to see Kieran performing live and solo.

*'One man, one guitar and a voice sent express mail from Heaven'* Time Out

[www.ndtt.org.uk/kieran](http://www.ndtt.org.uk/kieran)





Save up to 50% on ticket prices as an NDT Member. See page 38

cube  
essential  
theatre

## A double bill of drama from cube theatre

one of Cornwall's leading theatre companies

Sat 1 June, 2.30pm Landmark Theatre

**G** **8** £9.50, m £4.00, yp £4.00



### Freddy Dare and the Ginger Robber

Meet Fred Andrews, schoolboy and loser. Fred's dad died a while ago, and his mum is too sad to pay attention to him. To make it even worse, he's struggling to make any friends at his new school, but then he discovers a mysterious package at the bottom of a wardrobe and an unexpected visitor in the shed. Will these things give him the answers he needs or will they lead to his ultimate downfall?

Is it a film? Is it a play? cube theatre transports you on an epic adventure through striking visual effects, great original music, stylish performances and a dazzling script that packs an emotional punch.

Come and find your inner superhero!

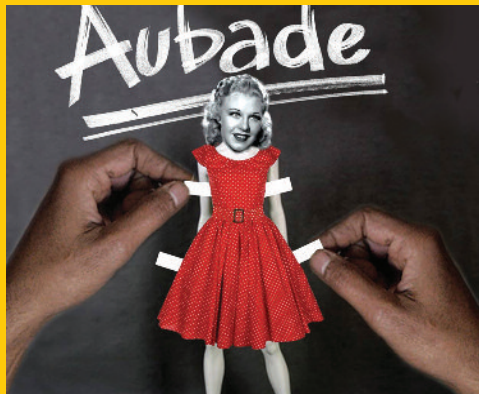
Running time approx 1hr 30mins

[www.ndtt.org.uk/freddy](http://www.ndtt.org.uk/freddy)

FAMILY

Sat 1 June, 8.15pm Landmark Theatre

**G** **15** £12.00, m £6.00, under 25s £6.00



### AUBADE (OH BAD!)

A new writing for contemporary theatre audiences from cube's associate writer, Jon Welch.

A young, trainee teacher arrives at a failing school, determined to raise the aspirations of poverty-line pupils. As she struggles with a difficult class, she turns increasingly to her single, middle-aged mentor for help. But her mentor has troubles of his own. Disillusioned, alienated, and recently bereaved after years of caring for his declining mother, he finds solace as the star of his own Fred Astaire fantasy. And now he's looking to cast his own Ginger Rogers whether she wants to dance or not.

The unflinching reality of modern schools collides with the escapist 1920s glamour of Astaire and Rogers, with potentially horrifying consequences. Blending film and theatre, knife-sharp dialogue and dance, cube theatre presents AUBADE.

Running time approx 1hr 55mins

[www.ndtt.org.uk/aubade](http://www.ndtt.org.uk/aubade)

DRAMA



Fri 31 May, 7.45pm Queen's Theatre

**G** **8** £20.00, m £17.00, yp £15.00

### Beyond the Barricade

Recreating original West End and Broadway musical hit songs with amazing authenticity, **Beyond the Barricade** returns to the Queen's Theatre with a brand-new production.

The show features a cast of past principal performers from the West End production of *Les Misérables* and will include songs from *Miss Saigon*, *The Lion King*, *Phantom Of The Opera*, *Jesus Christ Superstar*, *Chess*, *Blood Brothers*, *The Jersey Boys* and many more hit musical productions, climaxing with a spectacular finale from, of course, *Les Misérables*.

'An evening of musical paradise'  
What's On Northeast

Running time approx 2hr 25mins

[www.ndtt.org.uk/barricade](http://www.ndtt.org.uk/barricade)

MUSIC

Sun 2 June, 7pm Landmark Theatre **G** **10**

£13.00 (£11.50), m £9.00, under 25s £7.50, yp £6.00

### Charley's Aunt by Brandon Thomas

Presented by Creative Cow in association with Guildford's Yvonne Arnaud Theatre

Creative Cow, the company who brought you *The Rivals* last year, take on this hilarious farce and wrestle it to the floor in a flurry of Victorian vim and verve.

It is 1892 and dashing Oxford undergraduates, Jack and Charley are preparing to propose to Amy and Kitty, but a chaperone is needed or the girls will refuse their lunch invitation. As luck would have it, Charley's Aunt is arriving from Brazil (where the nuts come from) and will happily serve the purpose.

However, a telegram declares that her trip is delayed so their plans are in disarray until they hit upon the idea that Lord Fancourt

Babberley, their good friend, should put on a frock and assume her identity.

'Stylish, smart, farce-like fun & very cheering.'

The Times (*The Rivals* review)

Running time approx 2hrs

[www.ndtt.org.uk/charley](http://www.ndtt.org.uk/charley)







cafebarbistro <sup>62</sup>

Searching for fabulous food?

Find delicious dishes in a relaxed, stylish atmosphere at **62 The Bank**.

To book call **01271 324446**

62 The Bank, Boutport Street, Barnstaple, Devon EX31 1HG



*Giovanni's*  
*Italian Restaurant*

35 Boutport Street, Barnstaple, Devon, EX31 1RX

Telephone: 01271 321274

[www.gioannisdevon.co.uk](http://www.gioannisdevon.co.uk)

**INDIGO** *Secret*  
VINO THEQUE

*Indulge in a taste of decadence at our wine & cocktail bar dedicated to the joie de vivre.*

**CHEF'S MENU FOR LUNCH & DINNER WEDNESDAY TO SATURDAY**  
**OUR SPECIALITY IS GENEVA STEAK**  
in a delicious secret butter sauce  
HAVE FUN WITH FOOD AND FRIENDS

**CHAR-GRILL COOK & DINE AT THE TABLE**

BAR MENU DAILY  
WE ARE OPEN FROM 6PM-1AM SUNDAY TO TUESDAY & FROM 12 NOON-1AM WEDNESDAY TO SATURDAY

29 BOUTPORT STREET BARNSTAPLE EX31 1RP  
TEL.: 01271 326907  
[WWW.INDIGO-SECRET.COM](http://WWW.INDIGO-SECRET.COM)

*Fatbelly Fred's*  
FISH SEAFOOD

RESERVATIONS 01271 345700

**£29.95 Meal Deal**

Choose 6 tapas or 4 tapas with 2 desserts and a bottle of house red, white or rosé wine from our meal deal menu.

*Fatbelly Fred's*  
FISH SEAFOOD

27 Boutport St, Barnstaple, EX31 1RP  
visit our website for details [www.fatbellyfreds.co.uk](http://www.fatbellyfreds.co.uk) or for reservations call 01271 345 700



MUSIC

Thurs 6 June, 7.30pm **Landmark Theatre**



£20.00, m £18.00

## The Searchers

John McNally, Frank Allen, Spencer James, Scott Ottaway

Now celebrating their 50th Anniversary, **The Searchers'** remarkable career continues. With such classic hits as *Sweets For My Sweet*, *Needles and Pins*, *Don't Throw Your Love Away*, *Sugar and Spice* and *When You Walk In The Room*, they have contributed enormously in establishing the UK as the world's leading nation in the music industry.

Combined with anecdotes and reminiscences, this concert includes all their famous hits, plus many album recordings, B-sides and a selection of other collector and well known favourites.

Running time approx 2hrs 20mins

[www.ndtt.org.uk/searchers](http://www.ndtt.org.uk/searchers)



POETRY

Thurs 6 June, 8pm **Gallery Café**

£8.00 (in advance), £10.00 (on the door), m, under 25s, stu/yp £5.00

## Folly

Apples and Snakes presents a musical spoken word show with support from Clive PiG

Apples and Snakes return with an exceptional line up of spoken word and musical talent. Original, witty and moving, join poet **Sally Jenkinson** and folk musician **Nuala Honan** for Folly.

Supported by the best storyteller on the block, **Clive PiG**; dynamic stories from around the world delivered with a difference.

[www.ndtt.org.uk/folly](http://www.ndtt.org.uk/folly)

**Folly:**

1. A lack of good sense, understanding, or foresight
2. A building constructed primarily for decorations
3. A piece of spoken word with a full guitar score. Sometimes we think it's a confession about leaving, sometimes we think it's a miserable poetry musical.

Running time approx 1hr 30mins

Fri 7 June, 7.45pm **Queen's Theatre**

## One Night of Queen

Performed by Gary Mullen and The Works

After winning ITV's *Stars In Their Eyes*, **Gary Mullen** began touring on his own and in 2002 formed a band The Works, to pay tribute to rock legends Queen. Always playing to a sell-out audience when they visit North Devon, the outfit have also twice rocked the prestigious *BBC Proms in the Park*, in front of a crowd of 40,000. One Night of Queen is a spectacular live concert, recreating the look, sound, pomp and showmanship of arguably the greatest rock band of all time.

Running time approx 2hrs 10mins



[www.ndtt.org.uk/queen](http://www.ndtt.org.uk/queen)





[www.ndtt.org.uk/music](http://www.ndtt.org.uk/music)

Tues 11 & Wed 12 June, 8.15pm Landmark Theatre 12 £10.00 (£9.00)

VARIETY

## The Golden Age of Music Hall

Iffracombe Musical Productions returns with a non-stop romp through the best of British family entertainment from the Music Halls of the last century. Including those all too familiar songs, our Chairman will verbally, vocally

and victoriously conduct the band and cast with virtuosity and veritable vociferation and this will also include... you!

Running time approx 1hr 50mins



[www.ndtt.org.uk/skip](http://www.ndtt.org.uk/skip)

Wed 12 June, 8pm Gallery Café 12 £11.00, m £8.00, under 25s £6.00

BLUES

## Skip 'Little Axe' McDonald

Back for another Gallery Session, this legend of the blues world, Skip 'Little Axe' McDonald made his name as an integral part of the Sugar Hill house band playing on the most influential early rap classics and as part of Adrian Sherwood's On-U Sound crew. Previously he has worked with

the likes of Grandmaster Flash, Afrika Bambaata and Lee 'Scratch' Perry.

*'This is a compelling reminder that McDonald is a master of the contemporary blues.'*  
The Guardian

Running time approx 1hr 50mins

Thurs 13 June, 7.45pm Queen's Theatre 12 £21.00, m £17.50, stu/yp £10.00

MUSICAL

## Judy & Liza

This critically acclaimed musical experience recaptures Judy Garland and Liza Minnelli's world-famous 1964 London Palladium concert.

Starring two highly renowned West End leading ladies and with orchestrations from renowned composer Michael England, this sublime live performance includes the hit songs: *Cabaret*, *Maybe This Time*, *The Trolley Song* and *The Man That Got Away*. This dazzling production takes you on an emotional journey through their glamorous yet often troubled lives.

[www.ndtt.org.uk/judy](http://www.ndtt.org.uk/judy)

Judy & Liza is an evening of explosive singing, razor sharp triumphant highs and heart-wrenching wit that will leave you breathless.

*'Their performances are spellbinding.'*  
WhatsOnStage.com

Running time approx 1hr 50mins



JAZZ

Fri 14 June, 7.45pm Queen's Theatre 9 £18.00, m £15.00, stu/yp £8.00

## Ginger Baker's Jazz Confusion

**Ginger Baker:** drums  
**Pee Wee Ellis:** tenor sax  
**Alec Dankworth:** double bass  
**Abass Dodoo:** percussion

Having worked with some of the biggest names in music, everyone from Johnny Rotten to Eric Clapton, Max Roach to Fela Kuti, one of rock's most legendary hell

raisers, **Ginger Baker**, is back with a new band and a brand-new sound. Now living in South Africa, the man charged with pretty much inventing the drum solo, was once voted as *'the musician least likely to survive the 60s'*.

This exciting line-up of former James Brown saxist Ellis,

outstanding bass Dankworth and Ghanaian master percussionist Dodoo power through a heady mix of jazz, blues and African sounds drawn from Monk, Rollins, Haden and beyond.

Running time approx 2hrs

[www.ndtt.org.uk/ginger](http://www.ndtt.org.uk/ginger)

Fri 14 June, 7.30pm Landmark Theatre 10 £11.00, m £9.00, stu/yp £6.00

DANCE

ticket offer when you book Verve and Broken, £20.00 (normally £26.00), stu/yp £12.00 (normally £14.00)

## Verve 13

The postgraduate performance company of the Northern School of Contemporary Dance

An innovative and athletic programme of dance theatre shaped by four leading international choreographers.

A thrilling, physically-charged work by James Wilton, utilising his popular blend of dance with martial arts and capoeira; a series of heart-warming episodes by Ben Wright, combining dance with music and comedy; a quirky, technical work by Frauke Requardt; and a fresh, direct piece of dance theatre by Angus Balbernie.

With 12 dancers fresh from intensive training at some of the

world's leading conservatoires, Verve is well known for passionate, dynamic and invigorating performances.

*'Outstanding...a mixed bill that, while challenging, illustrated superbly the dancers' fluidity, strength and theatricality.'*  
Dancing Times on Verve 11

Special ticket price when you book for Verve and Broken, 1 Nov 2013 (visit our website).

Education workshops available: see page 34 for further information

Running time approx 1hr 40mins



[www.ndtt.org.uk/verve](http://www.ndtt.org.uk/verve)

ASH Productions LIVE in association with JL Touring





[www.ndtt.org.uk/porter](http://www.ndtt.org.uk/porter)

Sat 15 June, 8pm studio@QT **G** **16** £15.00, m £11.00, under 25s £10.00

COMEDY

## Lucy Porter People Person

Lucy Porter's brand-new show is based around a fascinating true story with a twist. Along the way, the thirty-something mum of Irish twins, (not Jedward thankfully) brings us her hilarious stand up observations on: happiness, home shopping and friendship.

'.....she is like your witty friend who's always brilliant company down the pub'  
The Scotsman

Running time approx 1hr 50mins



[www.ndtt.org.uk/tiddler](http://www.ndtt.org.uk/tiddler)

Mon 17 & Tues 18 June, Mon 1.30pm, Tues 10.30am & 1.30pm Queen's Theatre **G** **3** £11.00, school/groups £10.00

FAMILY

## Tiddler and Other Terrific Tales

from Julia Donaldson & Axel Scheffler

This delightful children's production is brought to you by the award-winning Scamp Theatre and adapted from the bestselling books by Children's Laureate, Julia Donaldson and illustrated by Axel Scheffler (creators of *The Gruffalo*). These terrific tales are woven together with live music, puppetry

and a whole host of characters from: *Tiddler*, *Monkey Puzzle*, *The Smartest Giant in Town* and *A Squash and a Squeeze*.

'a perfect children's show'  
The British Theatre Guide

Running time approx 55mins

Fri 21 June, 8pm Landmark Theatre **G** **12** £8.00

## The Real Inspector Hound presented by Studio Theatre

A Tom Stoppard play

Two first-night theatre critics, both with different agendas, inadvertently become part of *The Muldoon Manor Murder Mystery* that they are reviewing. Brought to you by Ilfracombe's

irresistible Studio Theatre, this is Stoppard at his best, creating great characters, entertaining with great wit and doubling back perfectly to create a surprise ending.

[www.ndtt.org.uk/hound](http://www.ndtt.org.uk/hound)



[www.ndtt.org.uk/wizz](http://www.ndtt.org.uk/wizz)

Wed 26 June, 8pm Gallery Café **G** **12** £11.00, m £8.0, stu/yp £6.00

FOLK

## Wizz Jones

Wizz Jones is often described as 'the musician's musician'. He was inspired by Big Bill Broonzy, Rambling Jack Elliot, Alexis Korner and Ewan McColl. He in turn has inspired Eric Clapton, Keith

Richards and John Renbourn and many more. Wizz has a unique acoustic guitar style, an eclectic repertoire and is renowned around the world.



studio@QT, gallery@QT, The Baptist Hall, St Anne's Arts & Community Centre £5.00 (£3.00), Frequent Fringer (8 shows) £15.00

# fringe theatrefest

## 20 - 23 June 2013

### Barnstaple's Fringe Theatre Festival

Barnstaple's very own Fringe Theatre Festival returns.

A record number of companies applied to be part of this year's Fringe TheatreFest and we're bringing together 32 of them to entertain you with over 100 exciting performances including drama, dance, poetry, music, spoken word and much more.

Like other fringe festivals, TheatreFest is uncurated - companies are decided by open draw - embracing community and student companies as well as professional performers, many of whom perform at Edinburgh and other national and international fringe festivals.

We will be providing a warm welcome to companies joining us from the South West, the wider UK and from Amsterdam and America. We're also welcoming back some local favourites, including the much-loved White Hippos Productions (the only group to have appeared in all seven TheatreFests), Mish Mash Productions with their spoken-word feast and Pidge Productions and Out There Theatre, who are both back for a third year.

Most performances will take place at the Queen's Theatre, the Baptist Hall in Boutport Street and, new this year, St Anne's Arts & Community Centre in Church Walk but watch out for other locations around Barnstaple...all will be revealed!

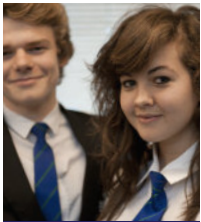
Ticket prices have been kept at last year's levels but the real bargain is the Frequent Fringer ticket: for £15 you can see any six shows, that's just £2.50 a time.

For full details visit [www.theatrefest.co.uk](http://www.theatrefest.co.uk) or pick up a TheatreFest brochure (available from April). Tickets on sale from the beginning of June.

[www.ndtt.org.uk/fringe](http://www.ndtt.org.uk/fringe)







Pilton Community College are proud to announce our 2013 Presentation Evening

Thurs 27 June, 7pm  
Queen's Theatre

Students, parents, directors and staff join together to celebrate the achievements of the College's top performing students at this annual awards ceremony.

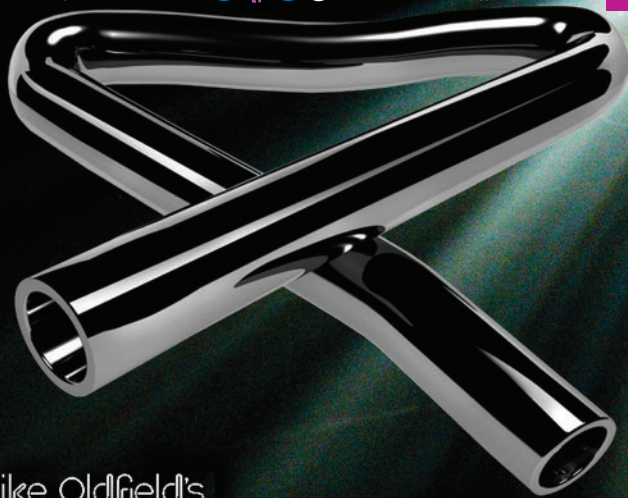
Event by invitation only

**Proud**  
PILTON COMMUNITY COLLEGE

www.ndtt.org.uk/pilton

Fri 28 June, 7.45pm Queen's Theatre **G** **8** £20.00, m £18.00, stu/yp £12.00

**MUSIC**



## Mike Oldfield's TUBULAR BELLS 'For Two'

### 40th Anniversary Concert Tour

When Mike Oldfield released his 1973 masterpiece, *Tubular Bells*, it required more than 30 musicians to perform it. Now, 40 years on, performed by just two massively talented musicians, this thrilling show recreates the album on stage, in real time in a unique and compelling theatrical experience.

**Tubular Bells for Two** burst onto the international scene at the Sydney Festival and was the smash-hit show

of the 2012 Edinburgh Festival Fringe, winning a Herald Angel Award.

Join us to witness this Herculean feat as **Daniel Holdsworth** and **Aidan Roberts** recreate the beauty and playful lunacy of one of the most important albums of the 20th century with just four hands and four feet.

★★★★ 'A must see and hear!'  
The Scotsman

Running time  
approx 1hr 50mins



**MUSIC**

Thurs 4 July, 7.45pm Queen's Theatre **G** **5** £15.00, m £10.00, stu/yp £8.00, (choir group £11.00 offer available until 30 April)

## Black Voices

'A substantial reminder that amid the crafted din and amplified clutter of modern pop, unaided, unadorned human voices are capable of creating powerful music' The Los Angeles Times

An a cappella quintet of truly outstanding quality, **Black Voices** perform songs from a repertoire

which they describe as 'a carefully woven tapestry' covering a broad spectrum of musical styles and continually adding new threads of colour to their rich fabric of oral music.

Their stunning performances and unique brand of a cappella include traditional African,

Caribbean and English folk songs, jazz, gospel, pop and reggae in a truly harmonic blend that celebrates their rich African, Caribbean and British heritage yet transcends gender, race, age or religious persuasion.

Running time approx 1hr 50mins

[www.ndtt.org.uk/voices](http://www.ndtt.org.uk/voices)



Sat 6 July, 2pm & 7pm Queen's Theatre **G** **3** £12.00 (£10.00)

**DANCE**

## Dance 2013

presented by Sarah Anne Westcott Dance Studios

A great show highlighting the talents in song and dance of our students of all ages.

Don't miss the fun from street dance to ballet, to jazz dance, to

tap dance, to musical theatre. It's all here just for you in our showcase of the best of local talent enjoying entertaining you

Running time approx 2hrs 30mins

[www.ndtt.org.uk/dance](http://www.ndtt.org.uk/dance)

Fri 5 & Sat 6 July, 7.30pm Landmark Theatre **G** **ed** **5** £10.00, m £9.00, yp £8.00, family ticket £30.00

**MUSICAL**

## The Wiz

Book by William S Brown  
Music and lyrics by Charlie Smalls

This adaptation of Frank L Baum's *The Wonderful Wizard of Oz* is a magical journey and beloved story of courage, brains, heart and home that will delight the entire family.

Dorothy's adventures in the Land

of Oz have been set to music in a dazzling, lively mixture of 1970s rock, gospel and soul music.

An amateur production performed by the students of Make the Move, by arrangement with Samuel French.

[www.ndtt.org.uk/thewiz](http://www.ndtt.org.uk/thewiz)





# ART TREK 2013

**“Art Trek celebrates its 10th anniversary this year.”**

## Open studios & associated events throughout North Devon

Over 100 local artists once again throw open the doors to their homes and studios and invite you to talk to them first-hand and see their work in progress. This is a great way to see or buy interesting artwork, meet the artists and see more of the area's fantastic coast and countryside.

Art Trek 2013 spans three weekends in July from Saturday 6th to Sunday 21st with some artists opening on additional days and offering demonstrations and workshops. Entry to most venues is free and there is no obligation to buy; the ethos is to create a

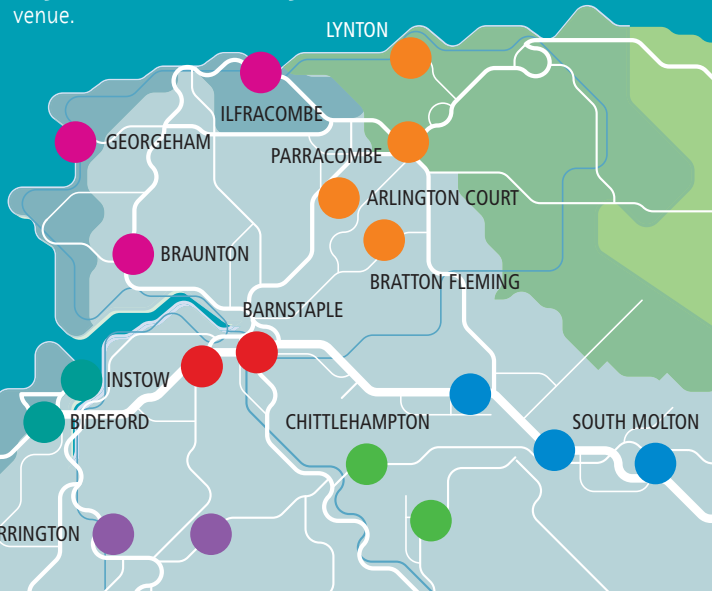
friendly and relaxed atmosphere so you can gain insights into the creative process.

A comprehensive guide will be available from the middle of May, with details of the participating artists, including some group exhibitions showcasing a wide range of arts and crafts in a single venue.

For further information visit the following quicklink:

[www.ndtt.org.uk/arttrek](http://www.ndtt.org.uk/arttrek)

or e-mail the Art Trek organiser, Stella Levy, at: [stella@widgerystudios.com](mailto:stella@widgerystudios.com)



Mike Woollcott



Mark Woollcott



[www.ndtt.org.uk/wedding](http://www.ndtt.org.uk/wedding)

Wed 10 to Sat 13 July, 7.30pm, Sat mat 2.30pm Queen's Theatre

G 11 eves £14.00, mat £11.00

MUSICAL

## The Wedding Singer Presented by Atlantic Coast Theatre

Based on the hit movie of the same name, **The Wedding Singer** takes you back to the 80s, a time when hair was big, greed was good, collars were up and shoulder pads were in. Wedding singer Robbie Hart

thought he had everything until he was stood up at his own wedding! Will ditzy waitress Julia sweep him off his feet in this 80s musical comedy with heart & hair! [See back cover of brochure for further information.]



MUSIC



[www.ndtt.org.uk/paradise](http://www.ndtt.org.uk/paradise)

Fri 12 July, 7.30pm Landmark Theatre

G 8 £19.50 (£18.50), m £15.00, stu/yp £10.00

## Rock 'n' Roll Paradise

**Rock 'n' Roll Paradise** is a spectacular rock 'n' roll show where the music plays the leading role. This show delivers the dream line up of six legendary acts in a concert that would have

been too good to be true: Elvis Presley, Jerry Lee Lewis, Buddy Holly, Roy Orbison, the Big Bopper and Eddie Cochran.

Running time approx 2hrs 40mins



VARIETY



[www.ndtt.org.uk/stockman](http://www.ndtt.org.uk/stockman)

Sat 13 July, 7.45pm Landmark Theatre G 12 £12.50 (£10.50), m £10.00, under 25s £8.00

## Paul Stockman Psychic or Trick of the Mind

**Paul Stockman**, one of the world's leading psychological entertainers, was recently awarded *International Psychic & Psychological Entertainer* of the year.

*'If you like Derren Brown you will love this.'* The Times

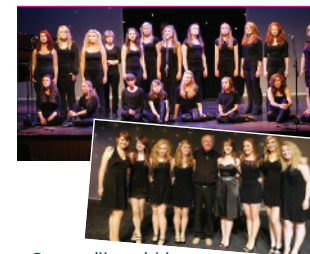
Pre-show food and entertainment: drink & burger just £7.00 (booking essential through Box Office)

Paul mixes psychology, intuition and a fascinating sixth sense to create a show like no other.

Running time approx 2hrs  
Brought to you by **The Young Producers**, an arts initiative run by North Devon Theatres.



MUSIC



[www.ndtt.org.uk/stars](http://www.ndtt.org.uk/stars)

Sat 20 July, 7pm Landmark Theatre G 6 £12.00, yp £6.00

## Young Stars of the Future

For the fifth consecutive year, **Nigel Brooks** has once more assembled a bevy of local talent for an evening of musical song, dance, drama and instrumentals. This year's line up includes La

Bella Voch, Panache, Nigel Brooks' Junior Singers and support from students from the Laine School of Arts plus a special guest star from London's West End.

All profits to Barnstaple Rotary Club Link's local charity of choice.



estuary views pub/restaurant  
open fire fresh fine food  
local produce relaxed  
dog 01271 860608  
estuary views pub/restaurant  
local produce fresh fine food

# Instow arms



info@instowarms.com instowarms.com  
Hatton Croft, Marine Parade, Instow, EX39 4JJ

panoramic views pub/restaurant  
sea side fresh fine food  
local produce relaxed  
dog 01237 476527  
panoramic views pub/restaurant  
local produce fresh fine food

# Westward arms



info@westwardarms.com westwardarms.com  
Unit 1, Latitude 51, Westward Ho! EX39 1GW

## THE CASTLE INN

LANDKEY

Pensioner special Wednesday  
£3.50

Try Our New Sizzling Platter

Food Served Daily 12-2

& 6-9 Mon-Sat

Sunday Lunch 12-3



The Castle Inn, Blakes Hill rd, EX32 0NF  
01271 830 438



## ilfracombe tandoori

One of the most exciting and unique modern eating venues in Ilfracombe. Experience the finest Bangladeshi & Indian cuisine in a sophisticated & relaxed atmosphere. Fully licensed.

### £5 VOUCHER

Spend over £30 & receive £5.00  
off any sit down meal with this voucher -  
1 voucher per table. Valid until 31st December 2013

## ilfracombe tandoori

RESTAURANT & TAKEAWAY

13/14 High Street Ilfracombe

01271 866453/866822

www.ilfracombetandoori.co.uk



Sat 27 July, 7pm Landmark Theatre G ed 4 £7.00, under 12s £5.00

## Destination Dance 2013

The Destination Dance Company brings you a jam-packed show of street dance routines including breaking and freerunning and hip hop.

Our students come from all over North and Mid Devon and range

from 4-24 years old. From beginners troops through to our talented competition teams, we've thrown everything into one show-stopping performance. See page 34 for workshop info.

[www.ndtt.org.uk/destination](http://www.ndtt.org.uk/destination)



Sun 28 Jul & Sun 4 Aug, 7.30pm Landmark Theatre G 8 £11.00, m £9.00, yp £5.00

## It's Showtime Presented by Small Pond Productions

Arranged and directed by Lee Baxendale

Ilfracombe's very own Small Pond Productions are putting on a concert to prove there really is no business like show business.

Celebrating some of the best showstoppers from Broadway,

with hit songs from the pens of Cole Porter, Irving Berlin and Rodgers and Hammerstein, the concert will include memorable numbers from *Kiss Me Kate*, *A Chorus Line*, *Chicago*, *The Producers* and features a supporting cast and live orchestra.

Running time approx 2hrs



[www.ndtt.org.uk/showtime](http://www.ndtt.org.uk/showtime)



[www.ndtt.org.uk/tour2013](http://www.ndtt.org.uk/tour2013)

Thurs 1 Aug, 7.30pm Landmark Theatre G 15 £20.00

## Jethro Live on Tour 2013

Always slightly on the edge, Jethro's fruity Cornish humour sees him turn everyday events into farcical stories, embellished with hilarity and all delivered in his trademark west country dialect. Tales told with such

effortless rhythm, timing and charm that it just melts all seriousness into pure laughter. The perfect anecdote to relieve everyone's day to day stresses. Contains adult humour.

Running time approx 2hrs

Fri 2 Aug, 8.15pm Landmark Theatre G 7 £16.50, m £14.50, yp £11.00, family £46.00

## Complete Madness

Authentically recreating the madness of Madness, this five-piece band will take you on a musical journey whilst capturing the story of one of Britain's most memorable, visual and fun bands. Complete with crazy costumes, comedy and chirpy banter,

Complete Madness invites you to hear those Madness classics: *House of Fun*, *Baggy Trousers*, *One Step Beyond*, *It Must Be Love*, *Driving In My Car*...

Running time approx 2hrs 10mins

[www.ndtt.org.uk/madness](http://www.ndtt.org.uk/madness)



♥ A £1.00 Love Arts contribution is included with each seat sold 27



# MAGIC ROSE

## THEATRE COMPANY PRESENTS

Two new gorgeous children's productions

Magic Rose Theatre Company launches two brand-new productions as part of the Landmark Theatre's summer programme. The company, in association with our education department, is also providing a week-long **Family Theatre Drama Residency** for 8 to 18 year olds (see page 35). Any budding drama Kings or Queen's or wannabe pirates... come and join in the fun.

## The Ugly Duckling

Sun 11 Aug, 2.30pm  
Landmark Theatre  
G FAMILY  
£10.00, m £8.00, yp £5.00, family ticket £27.00

Out tumbles the biggest, strangest duckling you've ever seen. Honk! Honk! Follow the ugly duckling through all the sights and sounds of the farmyard, as he waddles, swims and flaps his way into the big, wide world. Lost and lonely, will he ever find true friendship? This brand new adaptation of Hans Christian Andersen's classic fairytale promises to be a playful, colourful, family friendly production, brought to life with memorable music, larger than life animal characters, panto-style interaction and puppetry.

Running time approx 1hr 50mins  
See page 34 for Ugly Duckling workshop details.

[www.ndtt.org.uk/duckling](http://www.ndtt.org.uk/duckling)



## TREASURE ISLAND

Fri 16 Aug, 6.30pm  
Landmark Theatre  
G FAMILY  
£10.00, m £8.00, yp £5.00, family ticket £27.00

### Shiver me timbers, it's Treasure Island!

Ahoy there shipmates! Come and be a pirate. Set sail for fun and adventure with Jim Hawkins, Long John Silver, and all their friends in this wonderful show for all the family. Meet the pirates, the pretty island princess and Mrs. Hawkins the cook, not forgetting Polly Parrot! When young Jim Hawkins discovers a secret treasure map an exciting story starts to unfold. Watch out for Black Dog who's out to steal the treasure for himself and laugh with Silly Billy Bones in this swashbuckling pirate adventure. With plenty of comedy, music and colourful costumes, this terrific entertainment will leave you rolling in the isles...

Running time approx 1hr 50mins  
[www.ndtt.org.uk/treasure](http://www.ndtt.org.uk/treasure)



[www.ndtt.org.uk/stones](http://www.ndtt.org.uk/stones)

Fri 9 Aug, 8.15pm Landmark Theatre G £16.50, m £12.00, stu/yp £8.00 MUSIC

## The Stones

The Stones bring to the stage all the energy and excitement of a live Rolling Stones concert.

In a show which so accurately mimics the originals; close your eyes, open your ears and when

you hear those famous songs such as, *Satisfaction*, *Honky Tonk Women* and *Jumping Jack Flash* you could easily imagine you were listening to the real deal.  
Running time approx 2hrs 20mins



[www.ndtt.org.uk/pasquale](http://www.ndtt.org.uk/pasquale)

Sat 17 Aug, 8.15pm Landmark Theatre G COMEDY

£18.50, m £15.00, yp £10.00

## Joe Pasquale Summer Tour 2013

Direct from his unique performance on *Dancing On Ice*, Joe is back. Now you can watch him pirouette through puns, leap through laughs, slide into songs, then gasp at his amazing double gusset, see his skates and other

favourite fish... you won't get a frosty reception, and that's snow joke (see what I did there?).  
Support act for first half.  
Running time approx 2hrs



[www.ndtt.org.uk/pompeii](http://www.ndtt.org.uk/pompeii)

Sun 18 & Sat 31 Aug, 7.30pm Landmark Theatre G DRAMA

£10.00, m £9.00, stu £8.00

## Up Pompeii Performed by Barnstaple Musical Comedy & Dramatic Society

This hilarious romp through ancient Pompeii brings back all the favourite characters from the BBC's hit sitcom.

As Lurcio, Senator Ludicrus' slave attempts to deliver his prologue he's caught up in the sexual

liaisons in all quarters of his master's house. While chaos ensues an increasing rumbling is heard in the distance, what could that possibly be?

A comedy riot from start to finish.



[www.ndtt.org.uk/sunwest](http://www.ndtt.org.uk/sunwest)

Fri 23 to Mon 26 Aug Landmark Theatre free admission MUSIC

## Sunwest Festival

As the sun drops over the yard arm and we head towards the end of the Summer, this beer and music festival offers fantastic

music, real ales and family activities for the August Bank Holiday weekend. Visit our website for band listings and times.



Enjoy the finest Thai Cuisine

At Malee Thai our wish is to give every customer not just a meal, but an eating experience. Each of our authentic Thai dishes is freshly prepared with its own unique flavours.



**Malee Thai**  
RESTAURANTS



23 Boutport Street, Barnstaple - 01271 322221  
11 & 12 South Western Terrace, Yeovil - 01935 434040

[www.maleethai.co.uk](http://www.maleethai.co.uk)

**customhouse**

Custom House, 9 The Strand, Barnstaple, Devon. EX31 1EU  
Tel: 01271 322143 // Email: [info@customhouseonline.com](mailto:info@customhouseonline.com)  
[www.customhouseonline.com](http://www.customhouseonline.com)

**10% off your food for your pre or post theatre meal!!**

come and try one of our mouthwateringly endless burger combinations, juicy steaks, fresh fish or great vegetarian selection!! and with our countless "Custom" options you really can have it your way!!!!

tickets must be produced on request and must be valid for the same day as the meal

Full details & Menu available at [www.customhouseonline.com](http://www.customhouseonline.com)

Management reserve all rights to withdraw promotions or part of promotions at any time

**LILICO'S**  
TAPAS LOUNGE & BAR

**TAPAS OFFER!**  
**ANY 6 TAPAS DISHES** †  
PLUS  
A BOTTLE OF PORTUGUESE WINE  
OR  
4 BOTTLES OF ESTRELLA DAMM BEER

**ONLY £30\***

†Selected dishes only  
\*Offer available at selected times only

As seen in **food**  
food-mag.co.uk

**01271 372933**  
THE SQUARE • BARNSTAPLE  
[WWW.LILICOS.CO.UK](http://WWW.LILICOS.CO.UK)

**10% OFF**  
on take-away  
orders only, over £16

**The ganges**

Barnstaple's oldest Indian Restaurant  
Our reputation is your guarantee.  
Comprehensive menu with set meals and large choice of vegetarian dishes.  
Try our range of new dishes including duck.  
Dine out in style in our fully licensed restaurant with friendly atmosphere.  
Ideal for parties, celebrations and functions.

**87 Newport Road, Barnstaple**  
**01271 322299 / 324566**  
[www.gangesbarnstaple.co.uk](http://www.gangesbarnstaple.co.uk)

Thurs 29 Aug, 8.15pm, Landmark Theatre



£17.50, m £16.00, stu/yp £11.00

## Abba Reunion

Abba Reunion has been created by the original director, producer and choreographer of the award-winning *Abbamania* West End musical and stars the original Frida from the London cast!

The show gives Abba fans, old and new, the opportunity to once again get together and re-live the addictive Abba phenomenon that swept the airwaves and discos during the 70s and 80s.



Superbly accurate harmony vocals and full live-band, combined with stunning replica costumes and excellent authentic choreography

has produced one of the most requested tribute shows in the world today.

Running time approx 2hrs  
[www.ndtt.org.uk/abba](http://www.ndtt.org.uk/abba)

Fri 30 Aug, 8.15pm, Landmark Theatre

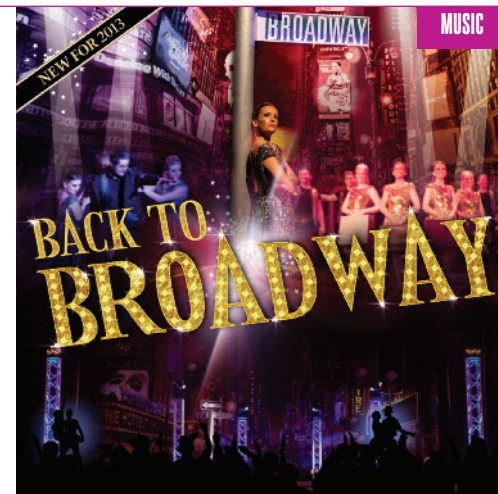


£18.00, m £14.00, stu/yp £9.00, family £46.00

## Back to Broadway

Back to Broadway is a celebration of musical theatre and combines captivating performances with dazzling costumes, stunning lighting effects and an amazing New York setting as it brings the best of Broadway and London's West End together.

During this production you will enjoy 30 of the best-loved tunes from *Cats*, *Phantom of the*



*Opera*, *Chicago*, *Les Misérables*, *Grease*, *Lion King*, *West Side Story* and more. Each song is interwoven by a narrator who gives the audience

just a little of the history and plotline of each musical, allowing you to step straight in to the story.

Running time approx 2hrs  
[www.ndtt.org.uk/broadway](http://www.ndtt.org.uk/broadway)

Fri 6 to Sun 8 Sept

Throughout Ilfracombe



## Sea Ilfracombe Maritime Festival

The largest harbour on the North Devon coast provides a stunning backdrop for this fifth maritime festival. It celebrates all things maritime and provides visitors and locals with a wide mixture of activities and fun. Take a stroll around this picturesque Victorian town and enjoy the entertainment and exhibitions on offer. Many events are free but donations are welcome.

See the full timetable of events at [seaifracombe.co.uk](http://seaifracombe.co.uk)

[www.ndtt.org.uk/sea](http://www.ndtt.org.uk/sea)



Announcing our 2013/2014 pantomime...

North Devon Theatres presents

# Sleeping Beauty

On Sale Now!

No-one will sleep during this pantomime... apart from Sleeping Beauty herself!

December 2013 January 2014

Sat 14	2pm	7pm	Thur 2	1pm	4.30pm
Mon 16	1pm*	7pm	Fri 3	2pm	7pm
Tue 17	10am*	1.30pm*	Sat 4	2pm	7pm
Wed 18	10am*	1.30pm*	All seats £13 *Schools £8.00		
Thur 19	1pm*	7pm	*Schools £8		
Sat 21	2pm	7pm	Groups 30+ £11.00		
Sun 22	1pm	4.30pm	Groups 10+ £12.00		
Mon 23	1pm	4.30pm	Family £46.00		
Tue 24	1pm	4.30pm	All seats £16.00 (£14.00)		
Thur 26	1pm	4.30pm	Young Person £12.00		
Fri 27	2pm	7pm	Members/Supporters £14.00		
Sat 28	2pm	7pm	Groups 30+ £13.00		
Sun 29	2pm	7pm	Groups 10+ £14.00		
Mon 30	2pm	7pm	Family £60.00		
Tue 31	2pm	-	All seats £20.00 (£18.00)		
			Young Person £15.00		
			Members/Supporters £18.00		

Sat 14 December 2013 - Sat 4 January 2014

## QUEEN'S THEATRE BARNSTAPLE

Box Office: 01271 32 42 42  
www.northdevontheatres.org.uk

No performances on Sun 15, Fri 20 & Wed 25 Dec, and Wed 1 Jan

All on sale now see our website for details

## Future Events



Fri 20 Sept Landmark Theatre  
**The Johnny Cash Roadshow**



Fri 20 September Queen's Theatre  
**The Platinum Hit Makers Tour**

Sat 21 September Queen's Theatre  
**Grimethorpe Colliery Band**



Thurs 3 October studio@QT  
**How to Start a Riot**

Sat 5 October Landmark Theatre  
**Motown's Greatest Hits**



Thurs 10 October Landmark Theatre  
**Jack the Ripper**

Sun 20 October Landmark Pavilion  
**Blown Away - Birdsnest Theatre**

Thurs 24 October Queen's Theatre  
**Blake**



Fri 25 October Queen's Theatre  
**Vampires Rock**

Tues 29 October studio@QT  
**Winston on the Run**

Thurs 31 October Queen's Theatre  
**Charlie Landsborough**



Fri 1 November Queen's Theatre  
**Blake**

Fri 1 November Landmark Theatre  
**Jackson - Live in Concert**

Fri 1 November Landmark Theatre  
**Broken - Motionhouse Dance Theatre**

Sat 2 November Landmark Theatre  
**The Elephant Bridesmaid**



Fri 8 November Queen's Theatre  
**Paul Merton - Impro Chums**

Sat 16 November Landmark Theatre  
**Rob Kingsley - A Vision of Elvis**

Thurs 21 November Queen's Theatre  
**Steeleye Span with Maddy Prior**

Fri 22 November Queen's Theatre  
**Jake & Elwood's Christmas Party**



Fri 29 November Landmark Theatre  
**Ardal O'Hanlon**



Sun 8 December Landmark Theatre  
**Landmark Veritabily Vintage Fair**

Come along to our first Vintage Fair...retro and vintage wares in a modern building. Women's and men's vintage accessories, jewellery, textiles, arts, memorabilia, books.

If you would like a stall at this Fair, we welcome traders and the public, email Sandy Campbell at sandy.c@northdevontheatres.org.uk or telephone 01271 865655



# Education Projects

at the Landmark Theatre



In addition to our year-round MTM performing arts classes, we offer a range of special projects including...



## Rock On

Youth Bands Night

Fri 7 June, 7.30pm

£1.00

aged 5+

A night of music from Ilfracombe Rocks students.



## Street Dance Workshops

with Kate from Destination Dance

Wed 31 July & Thurs 1 Aug, 10am to 4pm

£20.00 for two days

8 and above - beginners welcome

Two days of breaking, locking, lifting, stunting and street routines.



## Verve 13

Contemporary dance workshops

Thurs 13 June, 4pm to 5.30pm, 6pm to 8pm

workshop £6.00

workshop & performance £10.00 (see page 19)

4pm to 5.30pm - ages 10 to 13

6pm to 8pm - ages 14 to 25

Creative and technique workshops with dancers from Northern School of Contemporary Dance to accompany their production on Fri 14 June (see page 19).



## Lee Club

Ilfracombe Rocks

Mon 5 to Thurs 8 Aug

£25.00 (free to young people living in EX34)

Mon - Wed,

10am to 3pm (8 to 18), 3pm to 5pm (14+)

Thurs, 10am to 6.30pm (8 to 18)

Based on the Glee phenomenon, this light-hearted programme is for singing enthusiasts.

Performance on Thurs at 6pm, everyone welcome (Donations on the door).

## Family Theatre Drama Workshop

Ugly Duckling

Sun 11 Aug, 12pm to 1pm

£5.00 or £3.00 with a purchased performance ticket

6 to 8 - beginners

Acting lessons for budding drama Kings and Queens.



## Family Theatre Drama Residency

Treasure Island

Mon 12 to Fri 16 Aug

Mon to Thurs 9.30am to 5pm

Fri 16 10am to end of performance

£25.00 (tickets for show are also available, see page 29)

8 to 18 - beginners

Get your timbers shivering as Robert Louis Stevenson's Treasure Island is given a Magic Rose makeover in this drama residency. Drama participants will be helped to create characters and costumes and learn script and routines from the production, which they will get to showcase as part of the premiere performance on Fri 16 August (see page 28).

## AcroCircus

Mon 19 to Wed 21 Aug, 10am to 4pm daily

£25.00 for three days

8 to 16 - beginners welcome

Fun-filled days of balancing, flipping, flying, basing, wheeling, juggling, slack lining, plate spinning and tumbling.



## CarnaDrama - Go with the Flo

Stiltskin Theatre Company c.i.c

Tues 3 to Sat 7 Sept, Tues to Fri 10am to 4pm, Sat 10am to 5pm

£25.00 for five days

8 to 18 - beginners welcome

Say 'Heave Ho!' to your hang-ups and 'Dive In' to five days of messy and creative mayhem in this coastal project. Incorporating physical and street theatre, clowning, carnival and procession, mask, costume and prop making. Part of Sea Ilfracombe Celebrations on Sat 7 Sept.

## Creative Dance and Technique Residency

Motionhouse Dance Theatre

Mon 28 Oct to Fri 1 Nov, 9.30am to 5pm

£50.00 to include ticket to Motionhouse's production of Broken on Fri 1 Nov

experience necessary

A fantastic workshop opportunity, for anyone with previous dance experience, to work with Motionhouse dancers.

This project will be high-energy, physically challenging and will suit any dancer who seeks to develop their skill, nerve and creativity.

[www.nddt.org.uk/mtm](http://www.nddt.org.uk/mtm)

Please visit the education page on our website for full details or contact:

**Carol Turner**

01271 869 216

[carol.turner@northdevontheatres.org.uk](mailto:carol.turner@northdevontheatres.org.uk)

Thank you to all the funders of our education programme, who help us offer low cost and free projects for our local community to enjoy:



Supported using public funding by  
**ARTS COUNCIL ENGLAND**



Arts Council England • Barnstaple Bridge Trust • Concertina Charitable Trust • D'Oyly Carte Charitable Trust • J Paul Getty Jnr Charitable Trust • Rotary club of Barnstaple • Youth Music • Devon Music Service • North Devon Homes • Ilfracombe Ladies Circle



# Exhibitions

## Queen's & Landmark Theatres



Landmark Theatre  
8 April to 27 May  
**Sue Giblett**  
Felt Maker



Landmark Theatre  
1 July to 12 Aug  
**Jill Denton and Sandy Campbell**  
Textiles



Queen's Theatre  
15 April to 25 May  
**Joe Mitchell**  
Paintings & City Scapes



Landmark Theatre  
27 May to 1 July  
**Pete Caswell**  
Paintings



Queen's Theatre  
27 May to 6 July  
**Silver Halide Photographic Group**  
Black and white photography



Queen's Theatre  
6 July to 21 July  
**Art Trek**  
See p24 for more details



Queen's Theatre  
29 July to 23 Sept  
**Roger Ford**  
Paintings

## Museum of Barnstaple & North Devon



Image: James Ravilious from the Bedford Archive (c) Bedford Arts

27 April to 22 June  
**James Ravilious: Celebrations - Photographs of North Devon**

Black & White images of rural life in North Devon from the 1970s and 1980s captured by this renowned photographer.



27 July to 6 Sept  
**The Arts of Art**

Techniques, tricks and trade of the art world from perspective to lighting, to composition. Look into some of the major developments in the art world and how they shaped what people painted, how they painted it and what they painted with. A hands-on family fun exhibition by **Science Projects Ltd.**

29 June to 22 July  
**Harry Juniper 66 years a Potter**

A celebration of the life and work of this much loved guardian of the North Devon sgraffitto tradition.

Follow us on facebook, twitter or [www.devonmuseums.net/barnstaple](http://www.devonmuseums.net/barnstaple) for details of our PLAY events and Adult Learning opportunities.

**Why not pop into our Tea Room for a speciality tea or coffee and a slice of home-made cake!**

Open 10am - 5pm Summer. Admission: Free  
Tel: 01271 34 67 47

# Booking & Theatre Information

## 3 easy ways to book

**Online at:**  
[www.northdevontheatres.org.uk](http://www.northdevontheatres.org.uk)  
It is now possible to create an account which will speed up future bookings as the computer system will retain your name and address details saving you time. Each transaction carries an additional booking fee.

**By telephone on:**  
**01271 32 42 42**  
Lines are open Monday - Saturday, 10am-4pm (later on performance nights)

**In person at either:**  
**Queen's Theatre**, Boutport Street, Barnstaple EX31 1SY  
**Landmark Theatre**, Wilder Road, Ilfracombe EX34 9BZ



The Love Arts contribution helps us repair, repaint and renovate our buildings, meaning we can keep attracting the best artists for you.

## Terms & conditions

- £ Tickets cannot be exchanged or refunded.
- ! North Devon Theatres reserve the right to make alterations to the programme and/or cast and provide alternative seats to those specified on the ticket. Refunds will not be issued in these circumstances and we cannot be responsible for any consequential loss incurred.
- © Concessions are sometimes available for children, full-time students, over 60s, under 25s, registered disabled and those in receipt of Job Seekers allowance.

Please see our website for full terms and conditions or ask one of our Box Office staff for details.

## Access

- P Disabled parking is available next to both theatres.
- ♿ Both theatres have ramped

access\*, accessible toilet facilities and wheelchair spaces in the stalls

\*First floor Gallery Café at Queen's Theatre accessible by lift.

🔊 Sound enhancement systems are available in both theatres. Please enquire at time of booking.

🚌 The Theatres' Minibus Group caters for those with mobility issues. Please contact Janice Banks on 01271 86 56 55 to register.

Further access information is available on our website, or please speak to a member of staff.

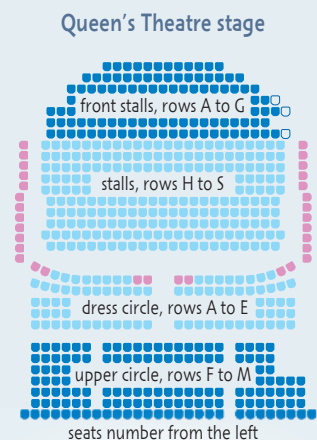
⊕ Wherever possible we offer a free carer's seat to patrons in receipt of Disability Living Allowance or Attendance Allowance, although for contractual reasons this is not always possible. In these instances we may offer a discounted rate to both the patron and their companion. Terms and conditions apply. Please contact the Box Office to book.

## Booking key

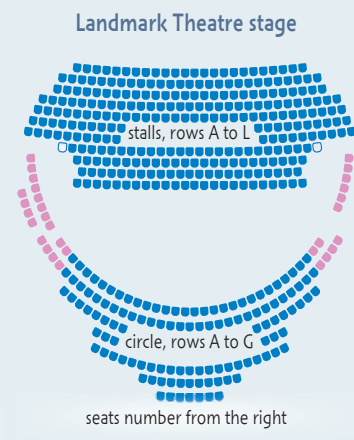
- G Group discounts available
- 🌸 Ticket offer for Members and Supporters
- ed Education project
- 📖 Free programme for Supporters and Members
- 12 Recommended minimum age
- 🚌 Community bus available

**Price codes**  
js Jobseeker  
yp Young Person  
stu Student  
m Member

## Seating plans



The seats have a gradual incline from row H and there are steps from row M.



□ position of wheelchair seating  
■ indicates restricted view



# Three beneficial ways to enhance your theatre experience

## Join our Membership Scheme



As a Member you get substantial discounts off the price of many shows.

There are two membership options with even more benefits as an NDT Supporter:

**NDT Member**  
(£25 annual subscription)

**NDT Supporter**  
(£50 annual subscription).

Both give you access to special offers and lots of savings on ticket prices. Over two thirds of the shows in the current season have a discounted price for NDT Members and Supporters.

Look out for the tree icon.

Some shows offer incredible savings of up to 50% (see cube theatre on page 14).

Special events are also arranged for Members and Supporters (see the receptions on page 4).

For further information on membership, ask at the Box Office or pick up a leaflet.

## Become one of our Volunteers



Do you have a passion for the theatre, want to help a local charity and meet people?

We have opportunities for **volunteer stewards** at the Landmark Theatre in Ilfracombe, the Queen's Theatre in Barnstaple and the Museum of Barnstaple and North Devon. A key element of our Front of House team, our stewards are front line staff who are here to enhance the customer's visit to our venues.

We are also looking for volunteer **DIY enthusiasts** to help with basic general maintenance of our buildings and **fundraising volunteers** to help assist our Friends of North Devon Theatres, our dedicated volunteer fund-raising committee.

If you like the idea of spending a few hours a week as part of our vibrant team then please get in touch: email **Sandy Campbell** [sandy.c@northdevontheatres.org.uk](mailto:sandy.c@northdevontheatres.org.uk) or call 01271 334676 or 01271 869219

## Sign up as a Business Associate



The benefits are many with special packages to promote your business.

We would like to thank our current Business Associates (shown opposite) for their financial support.

To find out how your business can benefit, please contact:

**George Hammett**  
07974 834291  
or email: [george.hammett@northdevontheatres.org.uk](mailto:george.hammett@northdevontheatres.org.uk)

## Thank you

We would like to thank all our Supporters, Members and Business Associates for their ongoing membership and say a big thank you to all our volunteers, who give so much of their time, energy and expertise to help us.



To minimise environmental impact, this brochure is been printed locally, using vegetable based inks on FSC certified paper.

Registered Charity number 1027553

## Thanks go to our Business Associates for their support





Atlantic Coast Theatre  
presents

# the wedding singer



Music by **Matthew Sklar**  
Book by **Chad Beguelin** and  
**Tim Herlihy**  
Lyrics by **Chad Beguelin**  
*Based on the New Line  
Cinema film written by  
Tim Herlihy*

**10th - 13th July**  
*Queen's Theatre, Barnstaple*

Based on the hit movie of the same name starring Adam Sandler, *The Wedding Singer* takes us back to a time when hair was big, greed was good, collars were up, and a wedding singer might just be the coolest guy in the room.

Break out your Joan Collins shoulder-pads and party like it's 1985! This musical comedy is an hilarious blast from the past!



This amateur production is presented by arrangement  
with JOSEF WEINBERGER LIMITED on behalf of MUSIC  
THEATRE INTERNATIONAL of NEW YORK.

