

**NORTH DEVON**  
DISTRICT COUNCIL  
*Close to the Community*



Project Part financed by  
the European Union

PLEASE  
PASS THIS  
BROCHURE  
ON OR  
RECYCLE  
IT

SEE  
INSIDE FOR  
FESTIVAL MAP  
OF NORTH DEVON

**NORTH DEVON**  
**Festival**

**4-27 JUNE 2004**

**SPONSORS OF  
THE NORTH DEVON  
FESTIVAL**



**ZURICH  
MUNICIPAL**



**BRAY · LEINO**

Mark Parkhouse  
Antiques & Jewellery



**SUPPORTERS OF  
THE NORTH DEVON  
FESTIVAL**

City Plumbing Supplies Ltd;  
Green Lanes Shopping Centre;  
Holiday Home Hunter;  
Ilfracombe District Tourist  
Association;  
J & A Cameras Ltd;  
North Devon College;  
North Devon Journal;  
North Devon Marketing Bureau;  
Pall Corporation;  
Philip J Milton & Company plc;  
Primary Times in Devon;  
Pro Drive - The Driver Trainers;  
Sainsbury's;  
South West Highways Signs;  
Stephen Brown & Co Estate and  
Residential Letting Agents



The North Devon Festival is  
very grateful to all the businesses  
that have made a donation to  
make this Festival possible.



**BE PART OF IT**



120 MAJOR EVENTS  
40 TOWNS AND VILLAGES  
24 DAYS IN JUNE

The ND Festival incorporates scores of events happening throughout 24 days in June. This index is a list of those events in date order. In the rest of the brochure you will find the events categorised into one of the five Festival strands.

	page
live entertainment	4
visual arts	14
history & place	22
lifestyle & sport	26
natural environment	30

**Travelwise**

To protect our beautiful environment, please carshare or use public transport wherever possible.

**This brochure**

This year our brochure is printed entirely on environmentally friendly paper. All material is from renewable resources from fully sustainable forests, bleaching is elemental chlorine free, 90% of waste is recycled and has environmental accreditation to ISO 14001.

Please recycle this brochure when you have finished with it and continue this process.

**North Devon Festival Office**  
The Queen's Theatre,  
Boutport Street,  
Barnstaple  
North Devon EX31 1SY

**Box Office:**  
01271 32 42 42



date	page	date	page
4	7	13	22
5-13	22	13	13
5-13	14	13	22
5-6	28	13	31
5-6	24	13	31
5	22	13	25
5	4	13	9
5	7	13	13
5	15	14	13
5	25	14-19	21
6	28	15-25	20
7	21	15-16	27
7	16	16	12
9-10	22	16	24
9	12	16	8
11	5	17	28
11	11	17	7
11	9	18-20	10
11	25	18-20	26
12	12	18	26
12	17	18	24
12	5	18	10
12	22	19-26	25
12	11	19-20	10
12	11	19-20	26
13	28	19-20	26

date	page	date	page
19-20	26	23	10
19-20	26	23	6
19-20	26	24	13
19-20	26	24	8
19-20	26	25-	8
19-20	26	4 July	8
19-20	26	25-27	23
19-20	26	25-26	9
19-20	24	25	5
19-20	23	25	8
19	6	25	13
19	31	26-27	20
19	26	26-27	30
19	26	26-27	28
19	9	26	8
19	10	26	24
19	10	26	13
19	17	26	20
19	23	26	17
20	23	26	8
20	26	26	5
20	26	27	13
20	10	27	8
20	11	27	11
20	13	27	8
20	6	27	29
21	10	27	27
23	24	27	29

**Spanning the Festival**

17 May	15		
-5 July			
17 May	15		
-1 June			
22 May	15		
-26 June			
31 May	16		
-20 June			
4-27	16		
4-27	21		
4-27	20		
4-27	21		
5 June	20		
-4 July			
5 June	00		
-2 July			
5-27	16		
5-26	21		
8-26	31		
	25		
	13		
15 April	27		
	17		

All details are correct at the time of publication, but are subject to change.

# NORTH DEVON Festival

The North Devon Festival is rapidly establishing itself as a major UK festival. It is a celebration of the rich and diverse cultural life of North Devon, with a wide range of activities reflecting the character of the region.

The Festival is unique in the UK as it includes not only top quality arts and entertainment, but also many events associated with the people and the place - those things which residents and visitors love about the natural beauty of the area. Enjoy...

LIVE ENTERTAINMENT

VISUAL ARTS

HISTORY & PLACE

LIFESTYLE & SPORT

NATURAL ENVIRONMENT

An enlargeable pdf version of this brochure is available as a download from the Festival website.

## LIVE ENTERTAINMENT CELEBRITY SERIES

At Queen's Theatre, Barnstaple and Landmark Theatre, Ilfracombe - see [www.northdevontheatres.org.uk](http://www.northdevontheatres.org.uk)

### LA BOHEME

SWANSEA CITY IS PROUD TO ANNOUNCE THE INAUGURAL SEASON OF ITS VERY OWN OPERA COMPANY – SWANSEA CITY OPERA.

Puccini's La Boheme is one of the most romantic of romantic operas; one of the great weepies of the repertoire, its appeal is timeless.

No opera can equal its captivating romance and heartfelt tragedy. With its real characters and strong emotions, the story of doomed love gave Puccini full rein to unleash his most glorious music. His emotionally charged score captures the audience from the opening bars to the final tragic moment of Mimi's death.

Sung in Italian.

■ Queen's Theatre, Barnstaple  
■ Sat 5th June, 7.45pm

Stalls/Dress Circle £19.50  
Front Stalls/Upper Circle  
£17.50 (conc. £15.50)

Box Office 01271 32 42 42

Sponsored by

Mark Parkhouse  
Antiques & Jewellery



### ROYAL PHILHARMONIC ORCHESTRA

#### THE QUEEN'S CONCERT

Conductor: Geraint Bowen  
Soloist: Mark Ashford

After their outstanding performance at last year's festival we are delighted to welcome back the world-renowned RPO for two concerts. The Queen's Concert has an appealing programme with the popular guitar concerto by Rodrigo performed by the talented Mark Ashford.

- Mozart - Marriage of Figaro Overture
- Rodrigo - Guitar Concerto
- Schubert - Unfinished Symphony
- Mozart - Symphony No. 40
- Queen's Theatre, Barnstaple
- Fri 11th June, 7.30pm

Stalls/Dress Circle £21.50  
Front Stalls/Upper Circle £19.50  
Box Office 01271 32 42 42

#### AN EVENING WITH GERMAINE GREER

*'If a woman never lets herself go, how will she ever know how far she might have got'*

Join Germaine Greer and ask that burning question you've been longing to throw at her: Serious or lighthearted, from politics to poetry, the role of women in third world countries, to Shakespeare's women, or even sex and the over sixties! Germaine's latest book *The Boy* is an examination of young

#### THE LANDMARK CONCERT

**The Last Night of the Victorian Proms**

Conductor: Geraint Bowen  
Soloist: Deborah Norman

A lively climax to this year's Ilfracombe Victorian Celebration, with the RPO leading everyone into the 'Last Night of the Victorian Proms'. Beginning as ever with Elgar's *Pomp & Circumstance March No 1 (Land of Hope & Glory)* and including the ever popular *Rule Britannia* and *Jerusalem*, this spectacular concert will culminate in a stunning firework display over Capstone at 10.45pm.

■ Landmark Theatre, Ilfracombe  
■ Sat 12th June, 7.45pm

All Seats £19.50  
Box Office 01271 32 42 42

men which leads us to think that this unique face-to-face encounter will be candid, pithy, enlightening, crammed with witty polemics, highly entertaining with no holds barred.

■ Queen's Theatre, Barnstaple  
■ Sat 26th June, 7.45pm  
All Seats £13.50 (conc. £12.50)  
Box Office 01271 32 42 42



### JACQUES LOUSSIER TRIO

Following in a tradition of swinging, lyrical pianists such as John Lewis from the MJQ and Bill Evans, Jacques Loussier burst on to the music scene with his exquisite jazz interpretations of many Bach favourites, including the haunting and beautiful *Air on a G String* that was used so effectively in the Hamlet cigar commercial.

The Festival is especially delighted to present the brilliant and charismatic French pianist with his trio in a special concert of their unique improvisations on the music of Bach, Satie, Vivaldi, Ravel and Debussy, including the *Four Seasons* and *Bolero*.

A superb evening for lovers of good music.

■ Queen's Theatre, Barnstaple  
■ Fri 25th June, 7.45pm

All Seats £17.50  
Box Office 01271 32 42 42  
Sponsored by



ZURICH  
MUNICIPAL

[www.northdevonfestival.org](http://www.northdevonfestival.org)



## BALLET BOYZ

Under the audacious direction of Michael Nunn and William Trevitt, George Piper Dances has been making headline news in the dance world since its inception in 2001. Audiences and dance critics alike are bowled over by the Company's repertoire, performance style and high artistic standards. Michael and Billy have made dancing exciting again.

They perform for the first time in Barnstaple with talented dancers, Oxana Panchenko, Monica Zamora and Hubert Essakow. An eclectic repertoire of vibrant dance works, including Christopher Wheeldon's commissioned piece, *Mesmeric*, set to the music of Philip Glass, *Broken Fall*, recently created by the exceptionally talented Russell Maliphant, which premiered at the



## ROSS NOBLE

Following a massive tour of Australia, Ross Noble is back in the UK with a brand new stand-up show '**Noodlemeister**'.

Spend an evening in the company of one of the country's most awesome live performers as he noodles his way around every subject under the sun, as well as some from the darkest recesses of his mind! This is sure to be an unforgettable night of entertainment... spontaneous... hilarious... sometimes bizarre, but always brilliant. Early booking is strongly advised.

*'His first act last night was one of the most brilliant hours I have ever spent in a theatre... and the second half was even better.'* Daily Mail

*'Ross Noble is Britain's most brilliant comic soloist.'* Metro

*'The most dazzlingly accomplished spontaneous-seeming comedy I've ever seen.'* Sunday Express

*'Ross Noble performs with all his dials turned up to 11.'* The Observer

■ Queen's Theatre, Barnstaple  
■ Sun 20th June, 7.30pm

All Seats £14.00 (conc. £12.00)

Box Office 01271 32 42 42

Royal Opera House and William Forsythe's striking pas de deux, Approximate Sonata IV.

The Ballet Boyz always take their trusted camera to rehearsals, producing behind the scenes video diaries. As part of this evening's performance you will be treated to an insider's peek into the creative process behind the pieces.

*'They are doing exactly what ballet should be doing if it is to have a future.'* The Financial Times.

■ Queen's Theatre, Barnstaple  
■ Wed 23rd June, 7.45pm

All Seats £12.50 (conc. £10.50)  
Family Ticket £35.00  
Young Person's Ticket £7.50  
Schools £6.00

Box Office 01271 32 42 42

## CWMBACH MALE CHOIR

Having performed at most of the prestigious venues in the UK including The Royal Albert Hall, The Barbican, St David's Hall and The Royal Festival Hall, the Cwmbach Choir is regarded as a leader in that wonderful Welsh tradition of great male voice choirs.

■ Landmark Theatre, Ilfracombe  
■ Sat 19th June, 8.15pm

All Seats £10.00

Box Office 01271 32 42 42

# PLUS

## THE VICTORIANS ON FILM

When film was invented in 1895, it captured the last few years of the reign of Queen Victoria ... and a surprising amount of fleeting images are available to show us what that age was really like.

In an evening of rare archive film we will see all aspects of Victorian life, including a Phantom ride along the coast from Barnstaple to Ilfracombe, the Boer War, fashions, circus performers, workers and rural life and much, much more, including the earliest of feature films. In addition, we have a few brief shots of Queen Victoria herself.

■ Landmark Theatre, Ilfracombe  
■ Sat 5th June, 8.15pm

All seats £5.00

Box Office 01271 32 42 42

*Part of the Ilfracombe Victorian Celebration, 5th-13th June.*



## AFRICA AFRICA

Africa Africa presents a musical of traditional Zulu cultural vibrancy that echoes the essence of the mighty Zulu nation and the heart beat of Africa.

A kaleidoscopic blend of rhythm, song and dance it tells of the powerful unifying forces of the Sangoma – witchdoctors.

The production portrays the fascinating proposal, engagement and wedding ceremony as performed before the missionaries came to South Africa bringing with them their Christian influence and teachings.

Traditional costumes, drumming and dancing combine to create exciting, energetic and enthusiastic performances giving the ultimate musical sensation.

*'...the overwhelming physicality of the male actors and the magnetic personality of the females create a massive impression on the audience. The quality of the singing is superb, with some outstanding individual voices and the overall effect simultaneously exciting and haunting'* The Times

■ Queen's Theatre, Barnstaple  
■ Thurs 17th June, 7.45pm

All Seats £14.00 (conc. £13.00)  
Family Ticket £40.00  
Young Person's Ticket £8.00

Box Office 01271 32 42 42

## CAROLINE NIN

### BROOMHILL JAZZ EVENING

Described as the Marlene Dietrich of the 21st century, Paris-born Caroline Nin is as sultry and breathlessly devastating as Dietrich, as captivating and intriguing as Piaf.

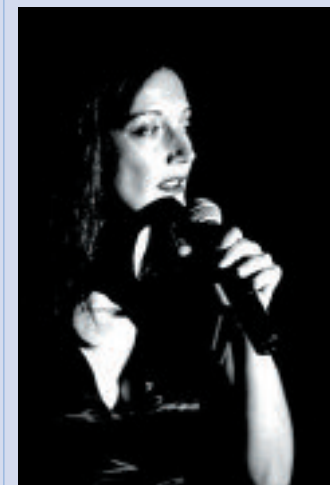
Starting her career on the Paris jazz scene, Nin then immersed herself in the London scene and now performs as far afield as Japan and America, winning numerous awards including the Edinburgh Festival's Best Cabaret Show.

Nin croons, sings and purrs in perfect English, French and German. Her singing and theatrical presentation push both established torch songs and cabaret standards to a different level.

■ Broomhill Art Hotel  
■ Fri 4th June, 8pm

Tickets: £15.00  
incl. Mediterranean Buffet

Info: Tel 01271 850262





## COMBE MARTIN MUSIC AND COMEDY FESTIVAL

### Caroline Berry (country plus...)

- The Royal Marine
- Fri 25th June, 8pm

**Village Fayre** with entertainers, activities, displays and live music featuring Cedar Country Duo, Aeroplane Blonde and Manhattan

- Hollands Park
- Sat 26th June, 2pm

### Dimestore Gamblers (rockabilly)

- The George & Dragon
- Sat 26th June, 8pm

### Cedars Showband (big band)

- The Pack O Cards
- Sun 27th June, 3pm

### The Honey Hooks

- The Castle Inn
- Sun 27th June, 8pm

### AND AFTER THE NORTH DEVON FESTIVAL

#### Clowns Tea Party & Music Workshop (ages 7 and under)

- Mon 28th June

#### Split Personalities

- Mon 28th June

#### Ploughboy Jazz Band

- Tues 29th June

#### Surestart event

- Wed 30th June

#### Phoenix

- Wed 30th June

#### Old Bridge Band

- Thurs 1st July

#### Disco (ages 8 to 11)

- Fri 2nd July

#### The Liquidators (ska) & Live Comedy

- Fri 2nd July

#### Musical coffee morning with Tony Rogers

- Sat 3rd July

#### Devon Youth Orchestra

- Sat 3rd July

#### Stars in their Eyes - open to all participants, under 16s, adults

- Sat 3rd July

#### Street Festival

- Sun 4th July

#### Manhattan

- Sun 4th July

Pub events **FREE**. Small charge for: Clowns Tea, School Disco, Classical Concert, Stars in their Eyes

For further information please contact Eileen or Leisa on 01271 883626

## LATER THIS SUMMER

### WORLD MUSIC & FOLK FESTIVAL

'OUR WORLD IS NOT FOR SALE'

A family day out to raise funds for Save the Planet Fund.

- Mon Aug 30th, 10am-11pm
- Tapeley Park Gardens

Info: Tel 01271 860897

## LATER THIS SUMMER

### HIDDEN VALLEY MUSIC

RELAX & ENJOY DELICIOUS FOOD & OUTSTANDING MUSIC

Talented west country Spanish guitarist, Al Marconi, will serenade you with an emotive blend of music whilst you take pleasure in the delights of a special three-course meal in beautiful surroundings.

- Lakeside Restaurant, Hidden Valley, Near West Down
- Thurs 24th June, 7pm

Tickets £19.95 (booking essential)

Info: Tel 01271 813837  
www.lakesiderestaurant.co.uk  
relax@lakesiderestaurant.co.uk

### THE PETROVIAN ORCHESTRA IN CONCERT

The orchestra was formed in 2002, from the nucleus of the pit orchestra for B'ple Operatic Soc. Now twenty five players strong and growing steadily in number.

- Emmanuel Church, Ilfracombe.
- Wed June 16th, 7.30pm

Cost: £4.00 per ticket

Tickets are available from the door on the night.

Info: Tel 01237 423768



## ARTAVIAN BAROQUE

### DIDO AND AENEAS BY HENRY PURCELL

A concert performance with Angela Henckel as Dido. Artavian Baroque Orchestra and Chorus directed by John Marston.

- Marwood Church, Nr Barnstaple
- Sat 19th June, 7.15pm

Tickets £7.50

Info: Tel 01271 323202  
Email jamarston@lycos.co.uk  
Patrons: Emma Kirkby and Anthony Rooley

## ALMA FLAMENCO

Led by Felipe de Algeciras, four dancers with a shared power and passion; a guitarist and singer to tear at the heart and raise the performance temperature; beautifully colourful costumes.

You even have the chance of a **FREE** dance workshop thanks to sponsorship from the Strawberry Fair Committee in Combe Martin. Book early - over 100 people packed into West Anstey Village Hall on their last visit.

Tickets: £7.00 (conc. £5.00)

- Filleigh Village Hall
- Fri 11th June, 8pm - BAR

Info: Tel 01598 760332

- Combe Martin Village Hall
- Sun 13th June, 7pm

Tapas and drinks available from The Pack o' Cards (200yds) from 6pm. Info: Tel 01271 882300

Pre-show & interval drinks from the Castle Inn (20 yds.)

NB - no street parking outside village hall, allow 5 mins. to walk from the nearest public parking

Info: Tel 01805 603201 or in person at Monica's Premier Supermarket, King St, Combe Martin

## ASHLEY WITHEY AND GUESTS

Talented Torrington teenager Ashley Withey plays easy-listening, sacred and classical music.

### In aid of Children's Hospice South West

- Torrington Methodist Church
- Fri 25th & Sat 26th June. Concert 7pm, pre-performance suppers from 5pm (booking essential)

Wheelchair accessible

Tickets from:

Jan Withey 01805 623436 or Sharon White, Little Bridge House 01271 325270

Concert £5.00 (ch. £2.50). Pre-performance supper £4.00 (ch. £2.00)





## LYNTON & LYNMOUTH MUSIC FESTIVAL

Anyone who attended the first ever Lynton and Lynmouth Music Festival, held in June 2003 and spanning genres ranging from modern jazz to dreamy pop, alt-country to Irish folk, roots to rock, will be pleased to know that we're back this year with an even bigger, better event, with four main shows over three days.

**Plugged!** a night of cutting edge electro-clash. DJ's will follow the live acts until 2am.

- Lynton Town Hall
- Fri 18th June

**Jazz on the Green** where you can grab a deckchair, kick off your shoes and enjoy a range of contemporary jazz-infused sounds.

- Manor Green, Lynmouth
- Sat 19th June, (afternoon)

**Saturday Night Live**, a feast of diverse musical talents.

- Lynton
- Sat 19th June, from 6pm 'til late

**Good Afternoon**, chilled-out indie, rock and pop fest.

Acts confirmed for this year's festival so far include *Mohair*, *Love Grocer*, *Blackbud*, *Caroline Martin*,

*Mark Speake & Julie Lewis* and *The Broken Family Band*, as well as up-and-coming local acts.

Compere: Steve Lamacq of BBC Radio 1 & 6 Music.

- Manor Green, Lynmouth
- Sun 20th June, (afternoon)

### Young Buskers

A busking competition in conjunction with ND Festival with cash prizes and a slot on the Good Afternoon stage. Under 25's and over 25's to be judged by celebrity guest on Sunday.

The Lynton and Lynmouth Music Festival is **FREE** to attend, except for the Town Hall gig.

For the full line-up, tickets for *Plugged!* or any other information, visit our website [www.llama.org.uk](http://www.llama.org.uk) email us at [info@llama.org.uk](mailto:info@llama.org.uk) or call 01598 753968/753980.



# WORD

## SCHOOLS' DAY AT BROOMHILL

Broomhill will again be hosting a 'Schools Day' involving top childrens writers and illustrators. Students from local schools will be spending the day at Broomhill participating in workshops.

- Broomhill Art Hotel & Sculpture Park, Muddiford, Barnstaple, North Devon EX31 4EX
- Wed 23rd June

[www.broomhillart.co.uk](http://www.broomhillart.co.uk)  
[info@broomhillart.co.uk](mailto:info@broomhillart.co.uk)  
 Tel 01271 850262

## BARNSTAPLE WRITERS AND FRIENDS

On the first evening of summer your local writers offer you a mostly light-hearted cocktail of stories, drama, poetry, music & wine: with Colin Shaddick and Chris Ayliffe, fresh from Radio 3's 'Ramblings', old hands Denis Knight and Roland Kirtley, and an infusion of fresh talent from new members.

- Henry Williamson Room, Barnstaple Library
- Mon 21st June, 7.30pm

Tickets £2.50 (conc. £1.50)

Info: Geoff King Tel 01271 388596  
 Email [geoff.king@devon.gov.uk](mailto:geoff.king@devon.gov.uk)



## POETRY JUKE BOX

### MATT BLACK

Matt's poetry booth will be part of Barnstaple Live! Watch out for him in the Library Square in the morning and outside Ottakars in the afternoon. Choose your poem from his menu and have a special delivery all to yourself.

- Barnstaple
- Sat 12th June

Organised by *Beaford Arts*

## POEMS, PINTS AND PLAYERS

### LIVE POETRY AND MUSIC

A great night of poetry and music from Phil Bowen, Mary Maher and Matt Black and jazz and swing music from Tony Marshall (7 string guitar) and Peter Taylor (trumpet & flugelhorn).

Liverpool-born Phil Bowen has published poetry, drama and a recent biography of the Liverpool Poets. Mary Maher has published three books of poetry: *Snow Fruit*, *Cold Flushes* and *Dusting Round the Jelly*.

Marshall and Taylor perform American show tune standards, swing numbers from the Fats Waller era and contemporary Latin American tunes.

- The George Hotel, South Molton
- Sat 12th June, 8pm

Tickets: £6.00 (conc. £5.00)

Tel 01769 572514/01805 603201

Live at *The George* - *Beaford Arts*

## SPIELS ON WHEELS

### 57 VARIETIES OF POETRY - MATT BLACK

Performance poet Matt Black will attempt to deliver 57 pieces of poetry in a ride starting at Umberleigh station, with pupils from the local primary school to wave him off with a poem. His arrival with a William McGonagall-style epic at Barnstaple station adds to the celebration of 150 years of the railway in the town. Then catch Matt cycling round a variety of unlikely spots in town to deliver a dish of tasty verse.

Matt Black is also judging the children's poetry competition *Train of Thought*. The winner will be announced at Ottakars on Sat 12th June.

*"because human beans without words is like beans on toast without beans"*

- All around Barnstaple
- Fri 11th June

Organised by *Beaford Arts*

## STORY WALKS

### MICHAEL DACRE & CHRIS BOSTOCK

See the buildings and scenery around two rural villages in a different light. Each day will have a mixture of woodland or field walks and stops at local houses and churches. There will be a story told in a local hostelry with time for lunch. Both days will finish with a cream tea in the village hall. Days



## THE EXMOOR STORY BUS

### STORIES AND TRAVEL WITH CHRIS BOSTOCK

Back by popular request. This bus will start in Barnstaple and head for Molland for a story in the churchyard of delightful, grade I listed, Molland Church; followed by lunch and a visit to the North Devon Open Art Exhibition in the Village Hall. The bus then winds across Exmoor with stops for stories, riddles and a walk, before finishing in Lynton for a cream tea at the local garden trail. There will be time to visit other gardens or ride on the famous cliff railway, before returning to Barnstaple. A great day out - book early limited to 28 places

- Starts in Barnstaple Square
- Sat 26th June, leaving at 11am; and returning approx. 5.30pm

Tickets (including a cream tea) £8.00 (ch. £6.50)

Info: Tel 01805 603201 or email [info@beaford-arts.co.uk](mailto:info@beaford-arts.co.uk)

A *Beaford Arts Village Voice* Event

will start at 11am and finish by 4pm. Please book to help with catering numbers  
 Tickets £6.00 (ch. £4.00) incl tea

- East Down, Pyne Arms car park
- Sun 20th June with Michael Dacre
- Info: Tel 01271 850457

- Goodleigh - Village Hall car park
- Sun 27th June with Chris Bostock
- Info: Tel 01271 345806

Organised by *Beaford Arts*

# BARNSTAPLE FRINGE



## GEORGIE FAME

Georgie Fame is a bona fide musical legend with over twenty albums, fourteen hit singles, and collaborations with some of music's most famous names including: Eric Clapton, Muddy Waters and Van Morrison. Tonight there is a rare opportunity to see Georgie Fame in an



## RAY GELATO

Ray Gelato leads one of the most popular, swing and jumping jive bands around, bringing new audiences back to this ever-appealing music.

Constantly in demand, Ray's opened the Robbie Williams show at the Royal Albert Hall, played for Paul McCartney at his wedding to Heather Mills, provided the birthday party mood for Bryan Adams and had the Queen swinging her jewellery at the Ritz.

His eagerly anticipated new album is released on April 26th, and this hot seven-piece band will be fantastic in the club atmosphere of the Litten Tree.

- The Litten Tree, Barnstaple
- Wed 16th June, 8pm

Tickets: £6.50 from ND Theatres Box Office 01271 32 42 42

## BARNSTAPLE LIVE!

### STREET THEATRE MAYHEM & MADNESS

including:  
The Ravioli Bros.  
Mad Maureen  
Breakdancing with The Known Assailants

- Barnstaple Town Centre
- Sat 12th June, 11am - 2pm



### DANCE, DANCE, DANCE

An amazing day of FREE youth dance and circus skills with performances from:

Neat Feet, Dancing Feet, Demi Dance School, Pilton Community College, Pilton School of Dance, Startrain, Stiltskin, Avva Laff, Cinderford Artspace, Fox's Youth Circus, North Devon Gang Show, Bash Street Theatre Co., Jókai Mór Primary School Folkdance Group from Hungary.

- Queen's Theatre
- Sat 12th June, 11am - 10pm

Info: 01271 32 42 42



## FRANKENSTEIN

### BASH ST THEATRE COMPANY

Mary Shelley's classic tale of creation and alienation is reworked in Bash Street's inimitable style when Professor Frankenstein, the renowned magician and illusionist, attempts to perform the ultimate magic trick - creation of life itself.

After several hilarious attempts, and with the help of his unsavoury assistants, Frankenstein gathers his 'raw materials', builds a spectacular life-giving machine, and succeeds in his misguided mission.

- Bratton Fleming Playing field
- Sun 13th June, 6pm

## CHILDREN'S THEATRE FESTIVAL

Visiting and local theatre companies join local schools for a feast of children's theatre.

Performances include:

- **The Mazemaker** *Guy Hutchins*
- **The Mousehole Cat/ Pied Piper** *Puppetcraft*
- **Beowulf** *Clydebuilt Theatre*
- **The Owl & the Pussycat** *Tall Stories Theatre*
- **Theseus & the Minotaur/ Pinocchio** *Indefinite Articles*
- **The Tin Soldier** *Storybox Theatre*

Info: Tel 01805 603201  
www.beaford-arts.co.uk

A Beaford Arts Event



## A MIDSUMMER NIGHT'S DREAM

### CHAPTERHOUSE THEATRE CO

Step back into the rip roaring 20's as Chapterhouse bring to life an exciting new production of everyone's favourite summer show. In the world of Jeeves and Wooster and country house living, dwells a land of hilarious characters and magical fairy folk. Featuring wonderful new music set to Shakespeare's magnificent verse.

- Tapeley Park Gardens, Instow
- Sun 20th June, 7.30pm (grounds open for picnics 6.30pm)

Tickets: Adults £10.00 (ch. 5-16 and students £7.00) from:  
Tapeley Park Gardens 01271 860897 (sorry no credit card)  
Barnstaple TIC 01271 375000,  
Bideford TIC 01237 477676

www.tapeleypark.com



## MYSTERY OF THE LOST LAUGH

### AVVA LAFF PRODUCTIONS

What is it that makes us laugh, that really makes us happy? For our hapless heroes, Wotsit and Fizz, these are questions that need answers! The Circus Ringmaster has lost his laugh and it's up to Wotsit, Fizz and the audience to help him to find it again otherwise it's the end of the Circus forever!

## ROBIN HOOD AND THE SHERWOOD EXPERIENCE

### COMMON PLAYERS TOUR

Many years have passed since Robin Hood lived as an outlaw in Sherwood Forest. Yet again, tyranny and injustice are spreading like wildfire. Sheriff Enterprises have a moneymaking scheme, and they'll not let anything stand in their way.

This family show is a battle for the spirit of the forest, setting fantasy against reality, and of course, Robin Hood against the Sheriff. So bring your tuck box, remember a blanket and whatever gold you possess, to help Robin save the greenwood.

- Atherington - Playing field
- Thurs 24th June, 7pm

- Witheridge - The Square
- Fri 25th June, 7pm

- North Molton - Court Hall Gdns
- Sat 26th June, 7pm

- Bishops Nympton - The Green
- Sun 27th June, 7pm

www.common-players.org.uk

Suitable for children from 5 to 105.

- Landmark Theatre
- Sun 13th, 12 noon
- Box Office 01271 32 42 42

- Swimbridge Village Hall
- Mon 14th, 6.30pm
- Pay on the door Info 01271 830311

Children £1.50 (adult £1.00)  
Family £5.00 (2 adults & 3 children)

www.northdevonfestival.org





Geoff Stainthorpe



Steve Bradley



BRAY · LEINO



# VISUAL ARTS



Chris Lovelock



Brenda Whormsley

## ART TREK

OPEN STUDIOS • DEMONSTRATIONS • ARTISTS' WALKS

Opening Times (all venues):

- Sat 5th - Sun 13th June, Noon until 6pm
- Late night Thurs 10th, until 8pm

### GEOFF STAINTHORP

Contemporary sculpture based on the human form. Plus new video piece and performance.

*'I take the human form and twist it, stretch it, turn it inside out and explore every crease and crevice, every blotch and blemish'*

- Open Studio: Old Undertakers Workshop, Trinity Street, Barnstaple. (Bus Station and Belle Meadow Rd Car Park 100m)

Email for detailed directions: [geoff@crab63.freeserve.co.uk](mailto:geoff@crab63.freeserve.co.uk)

Access via large double doors to ground floor; limited access to first floor.

### STEVE BRADLEY

Art glass and antique restoration.

- Demonstration: Due to space restrictions in my workshop I will be giving a demonstration at Dartington Crystal, Torrington on Saturday 12th June where I can share the process of glass making. Tel for further information.

- Open Studio Display: 2 Jewells Water, High Bullen, Torrington. From Torrington travel on B3227 to High Bullen, near St Giles in the Wood.

Email or phone for directions: [steve@bradleycrystal.co.uk](mailto:steve@bradleycrystal.co.uk)  
Tel 01805 623778

### CHRIS LOVELOCK

Landscape paintings in pastel, oil, acrylic and watercolour.

*'I paint landscapes of the places that I love most, including the fields and river behind my house'*

Refreshments available.

- Artist's Walk: Join me for a walk in the countryside and share in the inspiration for my work. Phone me for details.

- Open Studio: 64 Windsor Road, Pilton, Barnstaple

Email or phone for directions: [info@chrislovelock.co.uk](mailto:info@chrislovelock.co.uk)  
Tel 01271 376594

Access down steps from road.

### BRENDA WHORMSLEY

Vibrant paintings, photographs and installations.

*'I go to the beach to play then I paint bright pictures I make things and take photos. Pop in and see. The kettle is usually on'*

- Artist's Walk: Join me for breakfast on Croyde beach! Phone me for details and come early.
- Open Studio: 5 Lookout Cottages, Ashford, Nr Barnstaple.

From Banbury's Garden Centre, go to top of hill through Ashford, turn right, then at the junction turn right and next right again.

If stuck call Brenda on 01271 346238 or email [beewhoo@yahoo.com](mailto:beewhoo@yahoo.com)

[www.beewhoo.com](http://www.beewhoo.com)

## CARTOONED! POLITICAL ANIMALS

EXHIBITIONS, TALKS, PROJECTS AND FUN, ALL INSPIRED BY BARNSTAPLE-BORN CARTOONIST FRANCIS CARRUTHERS GOULD.

In 2004, Cartooned! goes with Gould into three dimensions and into the amusing world of anthropomorphism - turning humans into animals - to illustrate this year's theme: politics and corruption.

### POLITICAL ANIMALS:

#### The Ceramics of Francis Carruthers Gould and Work by Local Schoolchildren

Featuring the satirical ceramics of Francis Carruthers Gould, born 160 years ago in Barnstaple and the first political cartoonist on a daily paper: Look out for historical figures such as Chamberlain as Brer Fox and Kruger as Brer Rabbit, created by Gould and fired at the famous local pottery, Brannam.

Complementing Gould's work will be animal jugs created specially for Cartooned! by students from Pilton Community College. These satirise more current public figures, and even the students themselves!

- Museum of Barnstaple & North Devon

- 22nd May - 26th June (Mon - Sat)  
Preview: Tue 25th May



### POLITICAL ANIMALS:

#### Student Politics

Challenging exhibition by students from local schools and colleges.

Children from Sticklepath Primary School experimented with the 'humans as animals' idea, while North Devon College students used caricature and cartoon strips to respond to the politics and corruption theme.

- Queen's Theatre Gallery Bar
- 17th May - 1st June (Mon - Sat and during shows)  
Preview: Tue 18th May

### POLITICAL ANIMALS:

#### British Cartoonists Association

Exclusive exhibition of contemporary cartoons from members of the British Cartoonists Association, a group of the leading political cartoonists in the UK. This year, the cartoonists, including The Guardian's Steve Bell and Martin Rowson, unleash their pens on Cartooned!'s 2004 theme - politics and corruption. (Almost) no holds are barred!

- Queen's Theatre Gallery Bar
- 5th June - 2nd July  
Preview: Sat 5th June

### CELEBRITY ENTERTAINMENT

#### Germaine Greer

A rare visit to North Devon by a real political animal

- Queen's Theatre
- 26th June, 7.45pm (see page 4)

#### The Guardian's finest - Steve Bell

Lively debate and slide presentation on political animals.

- Guildhall, Barnstaple FREE
- 5th June, 2.30pm

### A VERY DIFFERENT CARTOON

#### Special Event

Last year, beach-goers joined cartoonists Steve Bell and Martin Rowson to create The Biggest Cartoon in the World. The result was suitably satirised in The Times newspaper!

At the time of going to press, 2004's special event was being kept securely under wraps. Keep an eye on the press and our website for details as soon as they are released.

This event will be crazy, extreme and daft.

### CARTOONED!

#### Online

The latest creations in response to the latest events - on the website.

- [www.northdevonfestival.org](http://www.northdevonfestival.org)
- Throughout the Festival.

*A collaborative project by North Devon Festival, North Devon Theatres, Museum of Barnstaple & North Devon and the British Cartoonists Association.*

*Cartooned! is grateful to all the artists involved in the education programme: Phillip Leach, Richard Cole, Nigel Mason, Multi Story Theatre and Mark Nesbitt.*





## BROOMHILL INTERNATIONAL ART EXHIBITION

### JIM RATTENBURY - SCULPTURE AND PAINTING

The sculptural forms Rattenbury uses are simple: discs, rings, rods, cones, waves, ladders, steps, masks, vessels. Living in Southern Spain, the use of shadow, and colour, sometimes intense, often bleached and weathered, are important elements in his work. The drama of simple black and white rods, with their implication of measure and ritual and the intrigue of dark chambers accommodating half revealed objects, are all parts of his visual and metaphoric vocabulary.

Rattenbury's paintings, on the other hand, enjoy a freedom from the physical restraints of structure. Nothing has to physically hold together. Illusion and reality, the

painted and the paint, can come together or go their separate ways. Illusionary objects can rise above or sink into the surface, impasto paint and applied objects can add a physical presence, marks can be buried to re-emerge later. Time, history and change become elements of the work, and evidence is revealed when layers are cut into or rubbed through revealing what lies underneath.

- Broomhill Art Hotel and Sculpture Gardens
- Throughout the Festival.

www.broomhillart.co.uk  
info@broomhillart.co.uk  
Tel 01271 850262



## RIVERSIDE EXHIBITION PREVIEW

### VISUAL ARTS IN HEALTH PROGRAMME SUPPORTED BY LOCAL ARTISTS

An annual celebration of talent within the local artists in the community.

By invitation only

## VIEWS OF ILFRACOMBE

### SUCH A DIVERSITY, SO MUCH TO SEE!

Getting into the Festival spirit, Dovetails Gallery will be running special workshops at local youth centres, care homes, hospitals and schools.

Informal, fun sessions will explore colour and texture through a variety of media, creating personal responses to Ilfracombe's town and coastal landscapes.

The gallery will be exhibiting art from the workshops throughout June, along with work by young aspiring artists and established professionals.

- Dovetails Gallery, 60 High Street, Ilfracombe.
- 9am - 5pm. Closed Thurs and Sun

Info: Tel Christine Beckley  
01271 864769

## SHADOW PUPPETRY FOR CHILDREN

### SALLY BROWN & STEVE TIPLADY

Sally and Steve are part of Indefinite Articles theatre company. Steve is also Artistic Director of Little Angel Theatre - nationally renowned for innovative puppetry. This workshop explores the use of shape, light and colour for children aged 8-12. Children will design a character as part of a presentation for family and friends at the end of the morning.

- Barnstaple Library, Henry Williamson Room
- Sat 18th June, 10am-12 noon

Booking essential. Tickets £5.00 including juice & biscuits.

Tel 01805 603201 or  
info@beaford-arts.co.uk or in person from the children's library.

Arranged by Beaford Arts

## ART FESTIVAL

### BISHOPS TAWTON BARNSTAPLE ROTARY AND FRIENDS

A festival of village arts and crafts embracing embroidery, quilting, tapestry, shawls, photography, beading, painting, pottery and stained glass. Exhibitors range from talented amateurs to seasoned professionals. Some exhibits for sale.



## SHEDS ON THE SEASHORE

### PHOTOGRAPHS OF BEACH HUTS BY KATHRYN FERRY

This exhibition complements the Ilfracombe Victorian Celebration

During the summer season of 2002 architectural historian Kathryn Ferry travelled by public transport along the English coastline from County Durham to Somerset photographing beach huts. This icon of the British seaside is still very much alive, a reminder of the bathing machines that used to be common around the Victorian coast. The exhibition will also contain copies of Victorian postcard images of bathing machines taken at a time when the seaside was a much more decorous and buttoned-up destination.

- Landmark Theatre, Ilfracombe
- Mon 31st May to Sun 20th June (normal opening hours)

A Beaford Arts Event

## HIDDEN VALLEY PHOTOGRAPHY

### WORKSHOP

Frustrated with Photography? Join the J & A Cameras & Konica Minolta team for a **FREE** demonstration of photographic technique, film and digital, at the most inspiring of settings.

Sessions start at 11am and 2pm with professional photographers taking you around this beautiful place, teaching you how to take better pictures and looking at equipment - there will also be facilities to enhance and print your best work. Professionals will be on hand throughout the day, so drop in at any time for a chat and a bite to eat or cup of tea.

Suitable for all levels from complete novice to enthusiast, either bring your own camera or borrow one of our digital ones.

- Hidden Valley, Near West Down
- Sat 12th June, 10am - 4pm

To reserve a place e-mail  
info@jandacameras.co.uk or  
Tel 01271 375037

Why not enter our 'Flavour of the Festival' Photographic Competition. Info: www.jandacameras.co.uk



## Iffracombe



In addition to the feast of Festival activities there are many excellent places to visit:

- Entertainment and theme parks
- Museums & heritage centres
- Golf courses
- Fishing
- Glorious beaches & countryside
- Stunning landscapes
- Pannier markets
- Restaurants, pubs & hotels
- Delightful coastal & market towns and villages

Contact the North Devon Marketing Bureau to find out more about our attractions and accommodation providers:



01271 323030  
www.northdevon.com

Devon Travelwise  
www.carsharedevon.com  
Tel 08700 11 11 99

ND Shopmobility  
Tel 01271 328866

North Devon's comprehensive network of Tourist Information Centres offer a wealth of special information:

**Barnstaple TIC**  
01271 375000  
info@staynorthdevon.co.uk  
www.staynorthdevon.co.uk

**Combe Martin TIC**  
01271 883319  
mail@combemartin-touristinformation.com

**Iffracombe TIC**  
01271 863001  
iffracombetic@aol.com  
www.iffracombe-tourism.co.uk

**South Molton TIC**  
01769 574122  
mail@visitsouthmolton.co.uk  
www.visitsouthmolton.co.uk

**Braunton TIC**  
01271 816400  
brauntontic@visit.org.uk

**Lynton TIC**  
01598 752225  
info@lynton-tourism.co.uk  
www.lynton-tourism.co.uk

**Woolacombe TIC**  
01271 870553  
woolacombetic@visit.org.uk  
www.woolacombetourism.co.uk

**National Park Visitor Centre**  
01598 752509  
visit@exmoor-nationalpark.gov.uk  
www.exmoor-nationalpark.gov.uk

www.northdevonspringfestivals.co.uk Tel 0800 089 0248





## THE SMALL PICTURE SHOW

### NORTH DEVON ARTS SUMMER EXHIBITION

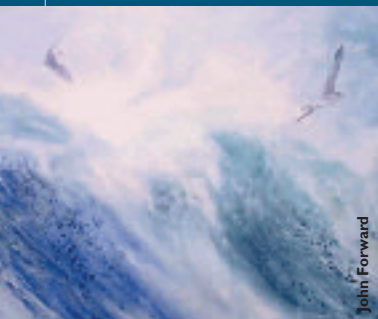
Starring the best of North Devon's artists, showing small, wall-mounted artworks. Keen prices, with artwork that can be taken away as soon as sold!

**Nothing priced over £150!**

- The Stables at Broomhill Art Hotel
- Sat 5th June to Sun 4th July - open to the public at weekends only.

For further details please contact, Stella Levy, 01769 540602 or [stella.levy@virgin.net](mailto:stella.levy@virgin.net)

[www.northdevonarts.co.uk](http://www.northdevonarts.co.uk)



John Forward



Peter Bright

## N DEVON OPEN ART SHOW

Vibrant abstracts, colourful seascapes and dramatic metal sculpture combine to produce visual excitement in a beautiful setting. This group show premiered at the Museum of North Devon earlier this year. Molland is a charming village with a beautiful listed church and good pub. Members of the local church and WI are providing refreshments.

The Exmoor Story Bus with storyteller Chris Bostock will be in the churchyard for a story at approx. 11.30am on Sat 26th June.

- Molland Village Hall and Church
- Sat 26th & Sun 27th June, 10.30am to 5pm

**FREE** admission. (Offerings for the church restoration fund)

A Beaford Arts Village Voice Event



## CRAFTS IN THE GARDEN

### AN EGGESFORD ARTS AND CRAFTS EVENT

'Crafts in The Garden' reflects the influences that Devon gardens have on a wide variety of art and craft, each artist demonstrating the enjoyment that comes from living surrounded by the natural world.

- The Gallery at Eggesford Garden Centre, Chulmleigh
- During the Festival, 10am-5pm daily

Info: Tel 01363 83410

## ND COLLEGE SUMMER SHOWS

Around 100 students exhibit exciting work from small to large, purely decorative to functional, 2 and 3 dimensional graphics, illustration, photography, 3D design, ceramics, fine art, fashion and textiles and more.

Final exhibitions for the HNC Illustration course and BA Fine Art Stage 1 to be announced.

- Exhibition held in Art Barn 2
- 15th to 25th June

**FREE** entry (normal college hours)

Contact the college for further information and times on 01271 338019.

## EQUINE ART

Workshops and displays on a horse & pony theme

- Photography, (including the use of digital cameras & computing)
- Painting - Storytelling
- Sketching - Poetry
- Sculpture - Singing, etc

Something for all age groups

- Horseford Farm, East Worlington, (Near Witheridge)
- Sat 26th June, from 10.30am

*people4ponies, the group organising this event, is funded by The UnLtd Millennium Awards.*



## SHEEP IN THE SHOPS!

### THE RETURN

Due to 'Sheep in the Shops' being such a resounding success in last year's Festival, 'Sheep' will be returning in droves to South Molton's shop windows again.

Created by local schoolchildren and residents in artist-led workshops, these 'Sheep' are anything but lifelike!

Check out window displays to find, name and vote for your favourite sheep, to ensure you are entered into our prize draw. Entry forms available from shops in the town.

- Throughout June and coinciding with South Molton Olde English Fayre weekend. (see page 23)

For project details contact: [stella.levy@virgin.net](mailto:stella.levy@virgin.net)

## PILTON ARTS GROUP OPEN EXHIBITION

Over 300 paintings on display. Including demonstrations and Children's Corner.

- Barnstaple Parish Church
- 14th to 19th June, 9am to 5pm

*If you are interested in exhibiting, please contact Molly Norman Tel 01271 343023*

## A VILLAGE FAIR

### PHOTOGRAPHS BY JAMES RAVILIOUS

An exhibition of images taken in the 70's and 80's at the Chulmleigh Old Fair celebrations. James Ravilious catches the mood of public celebration and private emotion with images of the tug o' war, children's races and quiet moments as people share cups of tea, hairdressing and fancy dress tips or try to escape from the general crush. He holds up a timeless mirror to rural life.

- Mon to Sat (Sat 5th to Sat 26th June) Open: 9am to 5.30pm

### Craft Demonstration

Annie Jennings - basketmaking  
Jenny Wilkinson - spinning/weaving

- Mon 7th June, 10am-4pm

Griffin's Yard sells quality work of south west craft makers - a development of our organic and natural foods emporium and café.

- Crafts Gallery at Griffin's Yard, North Road, South Molton

Info: Tel 01769 572372

Email: [jennywilkinson@tiscali.co.uk](mailto:jennywilkinson@tiscali.co.uk)

A Beaford Arts event

## PARK SCHOOL VISUAL ARTS FESTIVAL PROJECT

- Sculptures inspired by street performance artists and sports people.

- Paintings and watercolours of local coastlines and beach resorts based on the graphic design of tourism posters, i.e. Tom Purvis and Paul Nash.

- Cubist self-portraits inspired by Picasso.

All work has been produced by Year 10 and Year 7 students.





# HISTORY & PLACE

## ILFRACOMBE VICTORIAN CELEBRATION

### 9 DAYS OF CELEBRATION

- Victorian costumed procession
- Queen Victoria's Garden Party
- Olde Tyme Music Hall
- Suffragettes mock court, with judge & jury
- Magnificent steam engines
- Town Criers competition
- Grand Musical Firework Display Sat 12th June, from 10.45pm after the Royal Philharmonic Orchestra 'Last Night of the Ilfracombe Proms' at the Landmark Theatre (see page 5)
- plus**
- Trinity Fair
- Street entertainers
- Punch & Judy
- Carousel and rides
- Best dressed hat and pretty parasol competition
- Open top bus
- Archive films
- Victorian picnic
- Tea dances and cream teas
- Crowning of the Prince and Princess
- Victorian coffee mornings
- Teddy bears picnic
- Chucklefoot
- Organ grinders
- Guided historic walks
- Royal British Legion Youth Band
- Victorian bathing belles and gentlemen
- Prize quiz night
- Rockpool ramble at the Tunnels Beaches
- The Waverley paddle steamer
- Barnstaple Male Voice Choir
- Pearly Night
- Red Petticoats
- Themed sporting events
- Dancing and songs from Ilfracombe's school children
- Bideford Youth Pipe Band
- Victorian Image Photographs
- Salvation Army Band
- Pageant Parade
- Church blessings & services
- Vintage cycles
- Beer Festival and BBQ at the local yacht club
- Traditional games at Larkstone Pleasure Park
- Victorians on Film (see page 7)

Sponsored by Ilfracombe District Tourist Association

- Ilfracombe - all over the town
- Sat 5th to Sun 13th June

Info: Full event details are in the Ilfracombe Victorian Programme available from Ilfracombe TIC Tel 01271 863001 or email [ilfracombetic@aol.org.uk](mailto:ilfracombetic@aol.org.uk) [www.victoriancelebration.org.uk](http://www.victoriancelebration.org.uk)



## SOUTH MOLTON OLDE ENGLISH FAYRE

CELEBRATING THE CHARTER GIVEN TO THE TOWN BY CHARLES II & ELIZABETH I

- **Saturday 19th June**
- **Fayre Market** (in Costume)
- **Mayor's Parade**
- **Proclamation & Crowning of the Fayre Queen, Annual Floral Dance.**
- **Fayre Feast** For info visit or call South Molton Tourist Information Centre. Tel 01769 574122
- **Festivities** entertainment continues in The Square/Pannier Market
- **Budding Town Crier Competition** for young & old, 2.30pm
- **Teas - FREE** for children & Senior Citizens.
- **Family Quiz** in the Town Hall.
- **Sunday 20th June**
- **Church Parade & Pig Roast** in The Square.
- **Garden Party** in the Pannier Market with **Pirate Show** and Bouncy Castle. The theme is Peter Pan so come in Fancy Dress. Perhaps we can have a crocodile race! Cream teas, games galore.
- **The South Molton Drummers**
- **Surf Simulator and Bungie Run**
- **Round The Square**

The first 'City Centre Road Races' around The Square in South Molton will take place on Sunday June 20th. First race at 2.30pm. Races will be of varying numbers of laps depending on the age of the entrant (5-7 years to adult). Open to all the residents & schools of South Molton & District.

Races include 'Beat the time it takes the Town Hall Clock to strike 12'. Prize for the fastest lap.

Entry on the day 50p. per race.

Details of all events at South Molton Tourist Information Centre Tel 01769 574122

Entry forms for Budding Town Crier competition from [jackie@rjphotographic.co.uk](mailto:jackie@rjphotographic.co.uk) or 01769 574180 or South Molton Information Centre Tel 01769 574122

### Sheep in the Shops

Very different sheep!  
Full details on page 21

## ST JOHN'S MIDSUMMER FAYRE, WITHERIDGE

ONE OF THE OLDEST VILLAGE FAYRES IN THE COUNTRY

A weekend of entertainment and fun for all the family. The only place where you can see the Devon County Town-Crier Championship!

- Fri 25th June, 7pm  
**The Common Players Theatre Company** perform 'Robin Hood

and the Sherwood Experience'. **FREE** event. Bring your own seating.

- Sat 26th June, from 12 noon  
**Devon County Town-Crier Championship**, Tiverton Town Band, Majorettes, craft fair, street market, street entertainers, Punch and Judy, fun and games, vintage and steam rally

### Circus Berzercus

Among all the attractions of this traditional village fair, Ben Cornish and Steve Eldridge will delight you with their display of juggling, plate-spinning, mono-cycling, jolly japes and tomfoolery. There will also be the chance to learn basic juggling skills in an outdoor workshop.



- Sun 27th June, 10am, Open air church service in Witheridge Sq. all welcome.
- 11am, Fun Run

Info: Ella, Angel of Witheridge for details of programme (during licensing hours). Tel 01884 860429





## MEDIAEVAL CARNIVAL & FAYRE

### BRATTON FLEMING

This year is the 30th anniversary of the Bratton Fleming Village Festival, a weekend full of fun and entertainment for all the family.

**Carnival** Mediaeval carnival parade plus re-enactment of 'The Legend of Bratton Fleming'.

■ Sat 19th June, from 1.30pm

### Fayre

- birds of prey from Exmoor Zoo
- Torrington 1646
- stalls galore and games
- music and live entertainment
- beer tent
- barbecue & mouth-watering teas.

Enter into the spirit of the day and wear mediaeval dress.

### Barn Dance & Pig Roast

- 'Hot Punch' ceilidh
- Delicious Devon pork plus trimmings
- Licensed bar

■ Sat 19th June, from 7pm

**Dog Show** Pedigrees and family pets strut their stuff. Plenty of seating and cream teas.

■ The Green  
■ Sun 20th June, registration 1.30pm and judging from 2pm

## BARNSTAPLE HERITAGE DAY

### Castle Green

A selection of re-enactment groups will hold court, covering different periods in history.

### Barnstaple Heritage Centre

Fun events outside on the Millennium Mosaic area involving our town's history.

### The Guildhall

Re-enactment of the Barnstaple political corruption trial of 1853. Short excerpts take place all day. Come along and heckle!

### St Anne's Chapel

Open to visitors.

### Around the Town

Colourful costumed characters will parade around the town all day to delight and amuse you!

■ Sat 26th June, 10am - 4pm

Info: Tel Barnstaple Heritage Centre  
01271 373003

## HUGH SQUIER

### SOUTH MOLTON'S FORGOTTEN BENEFACTOR

Written and performed by Meshaw Strollers - a new community group.

■ New Assembly Room, 5th Molton  
■ Wed 16th June, 7.30pm

■ The Methodist Hall, South Molton  
■ Friday 18th June 5.15pm

■ Witheridge Parish Hall  
■ Wed 23rd June, 7.30pm

Tickets: £4.00 (conc. £3.00)  
(ch. £1.00)  
Info: Celia Drummond  
Tel 01769 550890

Supported by the Community Council of Devon.



## HORWOOD SCARECROW FESTIVAL

### A REAL TASTE OF DEVON VILLAGE LIFE!

The Domesday village of Horwood, with its beautiful 12th century church, has been hit, once again, with a plague of scarecrows. Come and walk the trail and search out the scarecrows. Can you find them all? A weekend full of fun for everyone with all-day refreshments, stalls, competitions, games and much, much more.

■ Horwood lies 6 miles south-west of Barnstaple (take the B3232 at Newton Tracey). Also from Old Barnstaple Road out of Bideford.  
■ Sat 5th June & Sun 6th June, 11am - 5.30pm.

£2.00 (accompanied children FREE)

For information, please phone 01271 858231 or 858564.

### ALSO THIS SUMMER

## PILTON FESTIVAL

### GREEN MAN DAY

Entertainment, market, ancient rites.

Info: Tel 01271 373392  
www.piltonfestival.co.uk

■ Pilton, Barnstaple  
■ Sat 17th July

### ALSO THIS SUMMER



## BARNSTAPLE 150

### THE 150TH ANNIVERSARY OF THE RAILWAY COMING TO BARNSTAPLE.

#### North Devon 150

A major exhibition celebrating the arrival of the railways and their impact over 150 years. With sounds, stories and even smells! The exhibition will then be split up and installed around North Devon during the Festival and the Summer.

■ Museum of Barnstaple & North Devon  
■ 3rd April - 15th May  
Info: 01271 346747

#### Barnstaple 150 Day

- Stalls and entertainment at the station throughout the day.
- Re-enactment of the original 1854 parade with representatives from all walks of life in Barnstaple from Barnstaple town centre to Junction Station - in Victorian costume.
- Live music and a pig roast outside the Heritage Centre.

■ Sun 11th July

Info: Councillor Janet Preston  
01271 378024  
Julie Parker, Barnstaple Heritage Centre. 01271 373003

## FUN DAY

### TAWSTOCK WILDLIFE TRUST

Lots to do, see and explore:

- Falcon displays
- Dog agility team
- Cream teas
- Pony rides
- Face painting
- Gater rides

■ St Michael's School, Tawstock  
■ Sat 5th June from 2pm

Info: Tel 01271 343242

## TRAIN OF THOUGHT

### CHILDREN'S POETRY

This exhibition is the culmination of a poetry competition organised and sponsored by Beaford Arts, Ottakers Bookshop and the Museum of Barnstaple & North Devon to celebrate the 150th anniversary of the arrival of the railways in Barnstaple. Children composed a piece of original verse about a railway journey - real or imagined - and this exhibition, displayed on computer, is the collection of all the entries received together with recordings of the winners reading their verse.

In addition to being displayed these poems will be included in North Devon on Disk, our community digital archive.

■ Museum of Barnstaple & North Devon, The Square, Barnstaple  
■ Sat 19th to Sat 26th June during opening hours.

## TEDDY BEARS' PICNIC

Bring your own teddy bear to enjoy a picnic in the school grounds, dance with a giant bear. Indoor activities if weather wet.

■ St Michael's School, Tawstock  
■ Fri 11th June 2.30pm

### FREE

Info: Tel 01271 343242



## STRAWBERRY FAYRE



### COMBE MARTIN

Street fayre with stalls, folk music, dancing demonstrations and handbell ringing. Friendly atmosphere and juicy strawberries. Plus Alma Flamenco (see page 9).

■ Cross Street, Combe Martin (adjacent to main car park at seaside). Venue is compact & level  
■ Sun 13th June, 1pm to 4pm

Info: Tel Julia Clark 01271 883611,  
Combe Martin TIC 01271 883319

### ALSO THIS SUMMER

## CHULMLEIGH FAYRE

### 751ST CHULMLEIGH FAYRE

Over 40 events - Wednesday is Main Fayre Day & Street Market

■ Tues 27th - Sat 31st July

Info: Tel 01769 580276  
www.chulmleigh.org

### ALSO THIS SUMMER

www.northdevonfestival.org



Intel

LIFESTYLE & SPORT



## INTEL® GOLDCOAST OCEANFEST

AN ACTION-PACKED PROGRAMME OF GREAT COMPETITION, ENTERTAINMENT AND FUN FOR EVERYONE

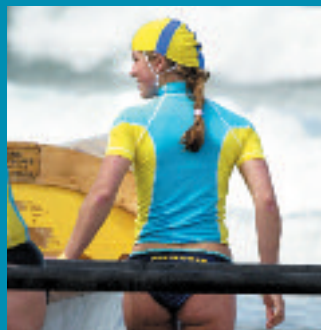
■ Croyde Bay, Woolacombe Sands  
Fri 18th to Sun 20nd June

- O'Neil Open ProSurf
- BIC World Longboarding Qualifier
- Skateboarding
- BMX trials
- Mountainboarding
- Kitesurfing
- Surfboat carnival
- Ocean ski marathon
- Surfboard paddle race
- Beach football & Beach Volleyball
- Live music

■ North Devon Surf Aquathlon  
Sat 19th June, 11am  
For more details and entry forms  
email: northdevontri@aol.com

Bring the folks along for a beer or sample the superb variety of cuisine also available - Mexican, Thai, seafood etc - so no need to pack a picnic!

entry details & info:  
[www.goldcoastoceanfest.co.uk](http://www.goldcoastoceanfest.co.uk)



Sponsored by:



### ASSOCIATED EVENT

## WEBB ELLIS TROPHY

Don't forget you can also be photographed with the Webb Ellis Trophy at **Atlantic Village, Bideford** - 15th April, 3pm to 4.30pm. Info: Tel 01237 422544 [www.atlanticvillage.co.uk](http://www.atlanticvillage.co.uk)

### ASSOCIATED EVENT

## TAG RUGBY FESTIVAL

### GREAT FUN & PRIZES

Now in its 11th year, the Tag Rugby Festival attracts over 450 children from North Devon Primary Schools.

Tuesday's competition is for schools with less than 100 pupils. On Wednesday it is the turn of the large primary schools. The winners on each day enter a play-off for the honour of representing

North Devon in the Devon Youth Games. Organised by second year sports students at North Devon College. All spectators welcome, **FREE**.

■ Barnstaple Rugby Football Club  
■ Tues 15th & Wed 16th June, 10am - 3pm

Info: Nathan Kelly at ND College  
Tel 01271 338112

Sponsored by Primary Times

### A SPECIAL FREE PRE-FESTIVAL CELEBRATION EVENT

## SWEET CHARIOT RUGBY TOUR COMES TO BARNSTAPLE



The Webb Ellis Trophy (Rugby World Cup) arrives in Barnstaple during the Easter Holidays as part of a nation-wide tour.



Getty Images

The North Devon Festival is proud to present this special **FREE** pre-Festival celebration event, which includes:

- England Rugby Football Union large 40 ton open out exhibition unit, featuring video and TV images and a range of international rugby trophies
- Showcase for local rugby clubs
- U 10s Junior Rugby Tournament
- Fun training sessions for U 15s
- Lantern FM Roadshow
- Special Prizes
- A unique opportunity to be photographed with the Webb Ellis Trophy (donations to the Wooden Spoon Society)



### COME AND BE PART OF IT!

■ **Castle Green, Barnstaple**  
(ample parking throughout the town - including park & ride)

■ **Thurs 15th April, 10am - 4pm**

Info: Sport & Recreation Unit,  
NDDC, Tel 01271 321422  
Email: [sports@northdevon.gov.uk](mailto:sports@northdevon.gov.uk)

Sponsored by



U 10s Junior Rugby sponsored by City Plumbing Supplies Ltd

Supported by Devon RFU

visit [www.northdevonfestival.org](http://www.northdevonfestival.org) for full details of the day's events



## CLASSIC FUN AT CLOVELLY

- 100 sports and classic cars from across the Country
- Cobbles Hobble - a sponsored running race from the bottom to the top of Clovelly!
- Local produce stalls and lots for all age groups and interests

A unique day at a very unique location and all for the North Devon Hospice.

■ Sun 6th June, 12 noon to 5pm

Info: Alison Hunt, North Devon Hospice, Tel 01271 344248.  
Registered Charity No. 286554

## NORTH DEVON FOOD FESTIVAL



vegetables and cider - all supporting local businesses.

Other fun and games will also be on offer, including a 'Ready, Steady, Cook' style event in association with The Professional Cookware Company as well as cookery demonstrations from some of North Devon's best chefs.

Atlantic Village has over 35 stores under cover with ample free parking and also offers up to 50% off famous brand names all year round. The centre also houses a children's adventure play area, Atlantis Adventure Park, so while you're busy eating, the children can be busy playing.

■ Atlantic Village, Bideford  
■ Sat 5th & Sun 6th June

For further information on the Food Festival, contact Alison Macfarren or Sarah Cliff on 01628 899700.

If you're a foody, then Atlantic Village is the place to be this year. Atlantic Village, just West of Bideford has been involved with the North Devon Festival for a number of years now, but this year will host the first ever North Devon Food Festival - a celebration of all that's good about North Devon produce.

You will be able to smell, taste and buy a selection of produce from the Festival, including cheese, meat,



## HEALTH & HARMONY

A weekend of fun, healing and laughter in beautiful, magical surroundings.

A wide range of holistic therapies are on offer - price capped at only £6.00 per session.



## LYN BONNETT NETBALL TOURNAMENT

Bring all the family for a great day and don't forget your picnic

■ Park Community School, Barnstaple  
■ Sun 13th June, 10am-4pm  
Teams register at 9.30am

Closing date for entries:  
Mon 17th May

Open to adult netball teams. Entry £20.00 per team (must be aged 14+ school year 10).

Info: Mercedes Honey  
Tel 01271 328188 (day) or  
01271 342844 (evening)

Organised by the  
North Devon Netball League

## AN EVENING OF FINE WINES

IN AID OF ND HOSPICE

Sample the world's finest wines.

■ RHS Garden Rosemoor  
■ Thurs 17th June, from 7pm

Info: Alison Hunt at the ND Hospice:  
Tel 01271 344248

■ Tapeley Park Gardens, Instow  
■ Sat 26th & Sun 27th June

Entry £3.50 (max)

Info: Ian Tel 08453 458 627  
Email healthandharmony@  
thepurplebus.com



## NORTH DEVON FESTIVAL ASSOCIATED EVENT

### RACE FOR LIFE

It is one of 150 women-only walks or runs taking place throughout the UK during the summer - from Inverness to the Channel Islands!

Last year 800 women took part in Barnstaple's Race for Life on a sunny morning in June, raising over £40,000 in the process. This year organisers hope to raise over £50,000 to help fund their vital work.

Cancer Research UK supports the work of more than 3,000 scientists and doctors at 30 locations and 80 academic institutions nationwide, including patient trials at North Devon District Hospital.

'We are extremely pleased to be associated with the North Devon Festival. The organisers of the festival really get behind the event and with their support, we hope to ensure that this year's event is the biggest and best yet.' The Times

■ Sun 27th June  
■ Seven Brethren Banks Events Area, Barnstaple

To sign up for Race for Life today, simply log onto  
[www.raceforlife.org](http://www.raceforlife.org)

or call 08705 134 314.



## NORTH DEVON FESTIVAL ASSOCIATED EVENT

## NORTH DEVON FESTIVAL ASSOCIATED EVENT

### DEVON YOUTH GAMES

Barnstaple are proud hosts of Devon Youth Games 2004. This prestigious event involves 2000 children in nine sports.

- Athletics
- Basketball
- Cricket
- Hockey
- Girls Football
- Netball
- Tag Rugby
- Tennis
- Swimming

This fun packed day also includes opening and closing ceremonies, entertainment, award

presentations to individual team winners, overall Local Authority winner and the Fair Play Trophy.

A fantastic opportunity for the competitors to gain new friends, develop their sporting skills and make new connections with local sport clubs.

■ Sun 27th June

Contact: Sport & Recreation Unit,  
NDDC: Tel 01271 321422

## NORTH DEVON FESTIVAL ASSOCIATED EVENT



## ASSOCIATED EVENT

### ILFRACOMBE GRAND PRIX

THE THUNDERCAT EUROPEAN & BRITISH CHAMPIONSHIP

Two rounds over several races.

THE OFFSHORE CIRCUIT RACING GRAND PRIX.

Two rounds of the Bartercard OCR British & European Championship.

■ 10th & 11th July  
■ The Pier, Ilfracombe

## ASSOCIATED EVENT





## LYN VALLEY GARDEN TRAIL

25 open gardens from spacious country landscapes to small village plots, all featuring a large variety of trees, flowers, shrubs, baskets, containers, ponds, landscaping and specimen plants.

Programmes from Lynton TIC, Gunns Gallery, Post Office, Craft Centre and some gardens.

Refreshments available en route.

■ Sat 26th & Sun 27th June, 1pm to 5pm

Info: Angela 01598 752374 or email: [angela@gunnsgallery.co.uk](mailto:angela@gunnsgallery.co.uk)

Accessibility varies from garden to garden - contact organisers.

## IF WALLS AND HEDGES COULD TALK

Join the Coast and Countryside Service to learn more about Devon walls and hedges.

■ Sun 20th June  
■ Hartland Point Car Park

Info: Tom Hynes on 01237 423655



RHS Garden Rosemoor



## ASSOCIATED EVENT

### BARNSTAPLE IN BLOOM

REGIONAL & NATIONAL WINNERS, BRITAIN IN BLOOM 2003

In 2004 we celebrate the 150th anniversary of the Railway coming to Barnstaple. Floral displays will go out from the 5th June.

Items are available for sponsorship.  
Info: Tel 01271 373351

## ASSOCIATED EVENT

## UNESCO BIOSPHERE RESERVE



### CRUISE THE BIOSPHERE

CRUISE AROUND THE ESTUARY AS PART OF THE UNESCO BIOSPHERE RESERVE.

Join the crew of the Neptunia II and take a special customised trip around the estuary and learn directly, via a live commentary from the Northern Devon Coast and Countryside Service, about the amazing wildlife and heritage that gained the area the global accolade of UNESCO Biosphere reserve. Bring binoculars and suitable clothing. 40 places are available.

■ Sun 13th June

Tickets cost £7.00 and are available in advance from Tarka Cruises Tel 01237 476191

### STORYTELLING AND MASKED PROCESSION

Join us for a masked procession along the cycleway from Braunton to Velator, followed by storytelling on the grassland area at the new Velator Wetland. Storyteller Don Newton and pupils from Braunton Community School celebrate the recently commissioned artworks in Braunton and raise awareness of environmental issues. The event will be a culmination of a mask making and story writing workshop held at Braunton Community School.

■ Sat 19th June, 2pm  
■ Braunton Countryside Centre and along the Tarka Trail cycleway.

No booking required. Just turn up and join in. Meet outside Braunton Countryside Centre at 2pm.

*An Art in the Landscape Event*



### GUIDED WALK & VOLUNTEER PROJECT

Join us for a day's conservation work in the heart of the UNESCO Biosphere Reserve at Braunton Burrows. The Coast & Countryside Service are improving the wooden boardwalk that runs across the southern area of the Burrows, to give visitors suitable access to this valuable conservation site.

Following the task, a guided walk led by Reserve Warden John Breeds explores the fascinating plant and wildlife of the Burrows.

■ Broadlands Car Park, Braunton Burrows  
■ Sun 13th June, 10am

Anyone wishing to attend this event, contact Dave Edgcombe of the Northern Devon Coast & Countryside Service: Tel 01237 423655

## NORTH DEVON FESTIVAL ASSOCIATED EVENT

### RHS GARDEN ROSEMOOR

NCCPG National Collections Day

■ Tue 8th - Wed 9th June, 11am-4.30pm Normal garden entry charge. NCCPG Members Free

Plants for Sunny Aspects Walk

■ Wed 9th June, 11am  
Tickets £7.00

Bonsai Weekend

■ Sat 12th Sun 13th June, 10am-5pm  
Normal garden entry charge

'Spirit of the Rose' David Lloyd Photographic Exhibition

■ Wed 16th - Wed 30th, 10am-5pm  
Normal garden entry charge

How to be a Television Gardener 50 years of growing and showing by Alan Titchmarsh

■ Sat 19th June, 6pm - Garden Open for Picnics, 7.30pm - Official Opening of the Shrub Rose Garden, 8.15pm - Talk

■ Gt Torrington, Devon EX38 8PH Tel 01805 624067 [www.rhs.org.uk](http://www.rhs.org.uk) In association with ND Festival

*Special Bicentenary Event, essential to ring for booking details - £20*

Rose Sunday

■ Sun 20th June, 10am-5pm  
Normal garden entry charge

Classical Concert

Ten Tors Orchestra  
■ Sat 26th June, 6pm - Garden Open for Picnics, 7.30pm - Performance is held in a heated marquee - £20

## NORTH DEVON FESTIVAL ASSOCIATED EVENT



**Ilfracombe's...**

**Holiday Showtime**

STARTS 13th JULY

LANDMARK THEATRE

BOX OFFICE 01271 32 42 42

www.northdevontheatres.org.uk

- ★ PAM AYRES
- ★ JOE PASQUALE
- ★ BARRON KNIGHTS
- ★ CHAS'N'DAVE
- ★ WHEELS ON THE BUS
- ★ BEYOND PHANTOM
- ★ WONDERFUL WEST END
- ★ THE KOSMIC KREW
- ★ FOREVER IN BLUE JEANS
- ★ ROCKIN' ON HEAVEN'S DOOR

**PALL** Pall Corporation

Ilfracombe

**Pall Ilfracombe are delighted to support the North Devon Festival.**

Pall Ilfracombe are the leading worldwide supplier of filtration equipment. We supply to a diverse range of industries and applications, such as Biopharmaceuticals, Chemical, Food, Beverages and Automotive.

*We are very pleased and proud to reside and be a major employer in North Devon.*

**North Devon & Exmoor Walking and Cycling Festival**  
Celebrating the Beauty and Variety of the North Devon & Exmoor Countryside

From 30th April to 3rd May 2004

- Y A great choice of guided walks covering North Devon, Exmoor, Lundy Island, Torfa Country and Ruby Country
- Y Experienced Walks Guides from the Northern Devon Coast and Countryside Service, Exmoor National Park, National Trust and local guides
- Y Wonderful choice of circular well-guided cycle rides, all adjacent to one another, including off-road cycleways and National Cycle Network routes on quiet country lanes.
- Y Cycle events for youngsters to enjoy
- Y Ticket allocations for all Guided Walks
- Y Entertainment throughout the weekends
- Y Come and enjoy some excellent walks and cycle rides!

Book now on 01271 863001  
Sponsored by **HEADWATER**  
Walking and Cycling Holidays at YOUR OWN RISK

**VISIT ATLANTIC VILLAGE'S FOOD FESTIVAL**  
SAT 5TH & SUN 6TH JUNE

- Celebrity Ready, Steady, Cook event
- Free admission and parking
- Trade stands
- Cookery demonstrations

**Atlantic VILLAGE**  
BUY IT SHOPPING & ATTRACTIONS

**WHERE FAMOUS BRANDS ARE ALWAYS AT BARGAIN PRICES**

Off A39, W.Bideford, N.Devon, Tel: 01237 422 544 www.atlanticvillage.co.uk

# Right here on your doorstep ...



Choose from a variety of North Devons' fresh foods ...



... and select from our fabulous range of fine wines from around the world.



## Brian Fords

The UK's No. 1 Independent Food Superstore

buying locally ...  
& buying globally

Seven Brethren Bank  
Barnstaple. EX31 2AS  
Telephone: 01271 327744

HELPING NORTH DEVON SHOW THE WAY TO THE REST OF THE COUNTRY

Featured in 'The Times'



Eating Out Guide 2003!

## The Old Custom House Restaurant

Barnstaple's newest old restaurant is pleased to support the ND Festival and wishes it every success!

The Restaurant, situated in this superbly renovated 17th Century building and incorporating a Wine Bar, is open six days a week from 11am till 3pm (for coffees and lunches) and then 6pm until late\*. We offer a varied, high quality menu with individually cooked and locally sourced fayre wherever

possible. The upper room has views across the Taw and is the ideal setting for your private party or just to unwind at the end of the day with family and friends! **To make your dining reservation please contact the manager - or just call in for a relaxing drink!**

A book on the history of this listed building, Customs and Excise and its evolution on the Strand in Barnstaple is now available from the Restaurant at only £5! It adds an important and fascinating part to the town's heritage.

\*Fri and Sat evening opening at 5.30pm

9 The Strand, Barnstaple, North Devon EX31 1EU Tel: 01271 370123

Sponsored by Philip J Milton & Company Plc

One of the Country's largest 100 IFAs

Survey sponsored by World Gold Council 2003



North Devon's leading and most qualified firm of independent, professional financial advisers is delighted to support the North Devon Festival.

Looking after the investment and financial planning needs of people just like you!

Now managing £65 Million of discretionary funds for clients - tentacles spreading across the globe!

Our extremely highly qualified staff includes two Certified Financial Planners and a Fellow of the key financial advisory associations.

Contact us for your free, no obligation consultation. Sterling House, 17 Joy Street, Barnstaple, North Devon EX31 1HE

Tel: 01271 344300  
Email: info@miltonpj.net  
Online: www.miltonpj.net

- Investment Management
- Savings and Investments
- Probate Services\*
- Pension Planning
- Life Insurance
- Income Protection
- Mortgages\*
- Accountancy & Tax Planning\*
- Will Writing & Executorship\*
- Share Dealing

Authorised and Regulated by the Financial Services Authority. (\*Not regulated by the Financial Services Authority)