

10th ANNIVERSARY
2008
LANDMARK THEATRE

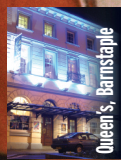
JULY-SEPTEMBER 2008



NORTH DEVON THEATRES



Landmark, Ilfracombe



Queen's, Barnstaple

Contents

Theatre events	4 - 37
Future events	36
Exhibitions	38
Museum of Barnstaple & North Devon	39
Take Part, educational events	40
Friends of the Theatres	42
Locations & seating plans	43
How to book	44
Access	45
Supporting your Theatre	46

Symbols used

- G** Group discounts available
- fr** Ticket offers for 'Friends'
- ed** Education project
- 🍴** Pre-show suppers available
- pr** Free programme for 'Friends'
- 18** Minimum age recommendation
- F** Suitable for all the family
- 🚌** Community bus available

- QT** Queen's Theatre
- GC** Queen's Gallery Café
- LT** Landmark Theatre
- LP** Landmark Pavilion

The Trust is financially supported by:



The education programme is supported by the Garfield Weston Foundation and The Linbury Trust.

This paper used in this brochure is from 100% renewable resources and printed using only biodegradable vegetable and soya based inks.

Event Diary

June

Blood Brothers			
Mon	2	7.30pm	QT
Tues	3	7.30pm	QT
Wed	4	7.30pm	QT
Thurs	5	2.30pm 7.30pm	QT
Fri	6	7.30pm	QT
Sat	7	2.30pm 7.30pm	QT

Eduardo Niebla Experience			
Tues	24	8.00pm	GC

Led Bib			
Wed	25	8.00pm	GC

The Bad Plus			
Fri	27	7.45pm	QT

Billy Cobham & Asere			
Sat	28	7.45pm	QT

July

24 London			
Fri	4	8.15pm	LT

The Witches of Eastwick			
Wed	9	7.30pm	QT
Thurs	10	7.30pm	QT
Fri	11	7.30pm	QT
Sat	12	2.30pm 7.30pm	QT

Chas & Dave in Concert			
Fri	11	8.15pm	LT

Sun Eve Theatre: Curtain Up on Murder			
Sun	13	8.15pm	LT
Sun	20	8.15pm	LT

Rockin' on Heaven's Door			
Tues	15	8.15pm	LT

The Wonderful West End			
Wed	16	8.15pm	LT

The Big Battle			
Wed	16	7.30pm	QT

An Audience with Arthur Smith			
Thurs	17	8.15pm	LT

Summer Soul-Stice			
Fri	18	8.15pm	LP
Fri	25	8.15pm	LP
Fri	1 Aug	8.15pm	LP
Fri	8 Aug	8.15pm	LP
Fri	15 Aug	8.15pm	LP
Fri	29 Aug	8.15pm	LP

The Traveller's Tale			
Sat	19	2.30pm 7.30pm	QT

Summer Showtime			
Mon	21	8.15pm	LP
Mon	28	8.15pm	LP
Mon	4 Aug	8.15pm	LP

(Summer Showtime cont)

Mon	11 Aug	8.15pm	LP
Mon	18 Aug	8.15pm	LP
Mon	1 Sept	8.15pm	LP

ABBA Mania

Tues	22	8.15pm	LT
Tues	29	8.15pm	LT
Tues	5 Aug	8.15pm	LT
Tues	19 Aug	8.15pm	LT
Tues	26 Aug	8.15pm	LT

One Night in Vegas

Wed	23	8.15pm	LT
Wed	30	8.15pm	LT
Wed	6 Aug	8.15pm	LT
Wed	13 Aug	8.15pm	LT
Wed	20 Aug	8.15pm	LT
Wed	27 Aug	8.15pm	LT

The Big Night Out

Thurs	24	7.30pm	QT
-------	----	--------	----

Jimmy Tarbuck

Thurs	24	8.15pm	LT
-------	----	--------	----

Sooty's Magic Wand Factory

Fri	25	1.30pm	4.00pm	QT
-----	----	--------	--------	----

Alice in Wonderland

Sat	26	2.00pm	7.00pm	QT
-----	----	--------	--------	----

When You're Smiling

Sat	26	8.15pm	LP
Sat	9 Aug	8.15pm	LP
Sat	16 Aug	8.15pm	LP

Sunday Eve Theatre: Blithe Spirit

Sun	27	8.15pm	LT
Sun	3 Aug	8.15pm	LT

The Jiving Lindy Hoppers

Thurs	31	8.15pm	LT
-------	----	--------	----

August

Harry and His Bucketful of Dinosaurs

Fri	8	1.30pm	4.00pm	LT
Fri	22	1.30pm	4.00pm	LT

Sunday Eve Theatre: Musical Magic

Sun	10	8.15pm	LT
Sun	17	8.15pm	LT

One Night of Elvis

Tues	12	8.15pm	LT
------	----	--------	----

Joe Pasquale

Fri	15	6.00pm	9.00pm	LT
-----	----	--------	--------	----

The Syd Lawrence Orchestra

Fri	22	7.45pm	QT
-----	----	--------	----

Sunwest Festival

Fri	22	various times	LP
Sat	23	various times	LP
Sun	24	various times	LP
Mon	25	various times	LP

All You Need is Love

Thurs	28	7.45pm	QT	
Fri	29	7.45pm	QT	
Sat	30	6.00pm	9.00pm	QT

September

Jive Talkin'

Tues	2	8.15pm	LT
------	---	--------	----

North Devon Folk Festival

Fri	5	8.00pm	LT
Sat	6	1.00pm	LT
Sun	7	1.00pm	LT

Richard Digance

Tues	9	8.15pm	LT
------	---	--------	----

Apples & Snakes

Wed	10	8.00	GC
-----	----	------	----

One Night of Queen

Thurs	11	7.45pm	QT
-------	----	--------	----

Jethro 2008 Tour

Fri	12	7.30pm	QT
-----	----	--------	----

Double Take Illusions

Fri	12	8.00pm	LP
-----	----	--------	----

Rainbow Live

Sat	13	1.30pm	4.00pm	QT
-----	----	--------	--------	----

Tom Kitching & Gren Bartley

Wed	17	8.00pm	GC
-----	----	--------	----

The Image of Cliff Richard

Thurs	18	8.00pm	LT
-------	----	--------	----

Classical Circle 2008/2009

Nikolai Demidenko

Thurs	18	7.30pm	QT
-------	----	--------	----

Don Cossacks State Dance Company

Fri	19	7.45pm	QT
-----	----	--------	----

Murder in Retirement

Fri	19	7.00pm	LP
-----	----	--------	----

Russell Howard

Wed	24	7.45pm	QT
-----	----	--------	----

The Johnny Cash Story

Thurs	25	8.00pm	LT
-------	----	--------	----

Think Floyd

Fri	26	7.45pm	QT
-----	----	--------	----

The Reduced Shakespeare Company

Sat	27	7.45pm	QT
-----	----	--------	----

The Importance of being Earnest

Tues	30	7.45pm	QT
------	----	--------	----

Wed	1 Oct	7.45pm	QT
-----	-------	--------	----

Thurs	2 Oct	2.45pm	7.45pm	QT
-------	-------	--------	--------	----

Fri	3 Oct	7.45pm	QT
-----	-------	--------	----

Sat	4 Oct	2.45pm	7.45pm	QT
-----	-------	--------	--------	----

The Gallery Sessions

Gallery Café, Queen's Theatre, Barnstaple



The Eduardo Niebla Experience

This Spanish guitarist is one of the most brilliant and emotive performers on the world circuit today, fusing flamenco gypsy jazz with Arabic, Indian, Latin and classical influences.

12 £70

Tues 24 June
8pm
ticket: £9.50

FRINGE



Apples & Snakes at the Gallery Sessions

Apples & Snakes, the UK's leading organisation for performance poetry, presents a showcase of immediate and dynamic poetry. There will be artists from across the UK and beyond demonstrating a diverse range of styles. Whether you prefer modern day storytelling, dreamy evocations of nature, or just something to make you laugh, we guarantee a quality show.



Led Bib

Mark Holub (dms), Liran Donin (bs), Toby McLaren (keys) Chris Willams, Pete Grogan (saxes). . Dodging definition, Led Bib are a maverick jazz band and an unlikely rock quintet whose driving melodies roar at full throttle. If you liked Accoustic Ladyland...

12 £140

Wed 25 June
8pm
ticket: £7.50

FRINGE

14 £20 £55

Wed 10 September
8pm
ticket: £6.50
students: £5



Tom Kitching & Gren Bartley

Tom Kitching and Gren Bartley have been performing as a duo since 2006 . They appeared at the first North Devon Folk Festival in 2007, and got a great response.

They play and sing an aromatic hotpot of folk, world and blues from around the globe. Tom draws on a vast array of fiddle styles, and is also an accomplished mandolin player. Gren is a songwriter, and a super-star on acoustic guitar and banjo.

They have played at major festivals and folk clubs around the country, and have a chemistry that ensures that audiences go home feeling happy and warm!

12 £20 £55

Wed 17 September
8pm
ticket: £8

BARNSTAPLE

FRINGE

JAZZ · BLUES · FOLK · POETRY · THEATRE · COUNTRY

**ADVENTUROUS
ENTERTAINMENT**

**UNCONVENTIONAL
PERFORMANCES**

DIVERSE VENUES

MANY FREE EVENTS

1st -30th JUNE

The 5th Barnstaple Fringe is now a very well established strand of the North Devon Festival and in every seeker of adventurous entertainment's diary. It features unconventional performances on the edge, covering a wide spectrum of genres - jazz, folk, country, bluegrass, bhangra, soul, americana, blues, comedy, performance poetry, fringe theatre and many more - all taking place in familiar locations throughout the town.

Now that's what I call a Fringe

SPONSORED BY

NORTH DEVON

JOURNAL



PART OF

NORTH DEVON **5th ANNIVERSARY**
Festival

northdevonfestival.org

Eating in

Let us tempt your taste buds with our excellent range of food and drink from our two café bars.

The Gallery Café

At the Queen's Theatre, Monday to Saturday, 10am to 3pm.

The Gallery serves fine pastries, fresh pasta dishes, crisp salads and a selection of paninis and sandwiches. Fully licensed, the café uses Fairtrade coffee and tea and is child and family friendly. A classic yet contemporary respite from the bustle of Barnstaple.

The Rendezvous Café

At the Landmark Theatre open seven days a week.

With its large ocean-facing terrace and breathtaking views, the Rendezvous makes a perfect setting to enjoy great food and the best outlook in Ilfracombe. Open for morning coffee, light lunches and afternoon tea.

Pre-show suppers at the Queen's Theatre

Make a night of it and enjoy a pre-show supper. Ask for details of availability and menu details when booking your tickets.



The Bad Plus

'We're making music to engage the audience'

Forget categories and catch phrases, the sound of jazz piano trio The Bad Plus is distinctive, eclectic and formidable. Hailing from the US Midwest, bassist Reid Anderson, pianist Ethan Iverson and drummer David King favour group improvisation over individual solos and blend diverse original material with provocative rock and pop covers including Nirvana, Queen, Blondie and David Bowie.



G 12

Queen's Theatre, Barnstaple

Fri 27 June

7.45pm

all seats: £12.50

students 12-18 yrs: £6.50

THE MUSICAL FOR ALL TIME

BILL KENWRIGHT

PRESENTS

WILLY RUSSELL'S **BLOOD** *Brothers*

THEIR
LIVES
WERE
WORLDS
APART...



...THEIR
DESTINY
JOINED
THEM
TOGETHER

Hailed by critics as one of the best musicals of all time, Blood Brothers has triumphed around the world. Scooping up no less than four awards for Best Musical in London, seven Tony nominations on Broadway, whilst continuing to receive a standing ovation at every performance, Blood Brothers is now in its 21st phenomenal year in the West End.

Set in Willy Russell's native Liverpool, it tells the captivating and moving tale of twin boys, separated at birth and flung to opposite ends of the social spectrum, to be re-united by a

twist of fate and a mother's haunting secret.

'Devastating... a masterpiece. If you haven't seen it, go. If you have, go again' News of the World



Queen's Theatre, Barnstaple

Mon 2 to Sat 7 June

Mon to Sat eves 7.30pm

Thurs & Sat mats 2.30pm

Mon to Thurs eves,

stalls/dress circle: £25.50 (£23.50)

upper circle: £23.50 (£21.50)

Fri & Sat eves,

stalls/dress circle: £29.50 (£27.50)

upper circle: (£27.50 (£25.50)

mats, all seats: £19.50





Billy Cobham & Asere

Latin, jazz & Cuban music

This powerful collaboration, which began very successfully at Womad in 2002, brings together one of the world's greatest living drummers, Billy Cobham and the highly regarded Cuban band Asere for an intoxicating mix of Latin, jazz and Cuban music and rhythms.

Cobham shot to stardom with John McLaughlin's ground-breaking electric jazz band Mahavishnu Orchestra; his career also includes working with James Brown, George Benson, Herbie Hancock, Michael Brecker and Santana.

Workshop at 3pm
(£3.50 per person, or £2 if you've booked for the evening concert).



G 12

Queen's Theatre, Barnstaple

Sat 28 June
7.45pm

all seats: £15 (£13.50)



24 London

One man's journey

Artistes from the Generating Company, with some of North Devon's most-talented young people, embark on this year's Fysical project.

This is a visually stunning piece of physical theatre which combines contemporary circus with contact dance and theatre.

Hold on tight and fasten your seatbelts, the journey has begun...



G ed 6

Landmark Theatre, Ilfracombe

Fri 4 July
8.15pm

all seats: £9.50 young person: £6.50
family ticket: £26

One HELL of a musical!

THE WITCHES OF EASTWICK

Book & Lyrics by JOHN DEMPSEY • Based on the novel by JOHN UPDIKE and The Warner Bros. Motion Picture • Music by DANA ROWE



Originally Produced on the London Stage by Cameron Mackintosh. This amateur production is presented by arrangement with Josef Weinberger Ltd on behalf of Music Theatre International and Cameron Mackintosh Ltd

Sponsored by...



G 12

Queen's Theatre, Barnstaple

Wed 9 to Sat 12 July
eves 7.30pm, Sat mat 2.30pm

all seats: £12
restricted view/upper circle: £6
mat, all seats: £6



Chas & Dave in Concert

Legendary cockney duo Chas & Dave make a welcome return for another good old knees up. Packed with East End charm the show starts with stories and unplugged music of the past and is followed by the plugged-in music of now including the hits: *Gertcha*, *Rabbit* and *Ain't No Pleasing You*.

Always in huge demand, Dave sums them up:

'We're like pie and mash, simple and very London'



G 16

Landmark Theatre, Ilfracombe

Fri 11 July
8.15pm

all seats: £17 (£15)

Summer Sunday Theatre



The cream of local theatre brings a variety of talents to these popular productions



Curtain Up on Murder

by Bettine Manktelow

A storm rages outside a run down seaside theatre as the company struggle to rehearse. Why are the doors locked? Why did the ASM plunge to his death, how was the leading lady poisoned ... is there a killer in the company?

Barnstaple Dramatic Society present a spine tingling chiller for those warm summer evenings.

G 12

Landmark Theatre, Ilfracombe

Sun 13 & 20 July
8.15pm

all seats: £7.50
family ticket: £25



Blithe Spirit

by Noel Coward
directed by Anne Bacon

The comedy tale of a husband's haunting by the mischievous ghost of his first wife is given substance in Studio Theatre's production of this well-loved favourite of theatre and screen.

Studio Theatre is well-known for comedy successes including *Habeas Corpus*, 'Allo 'Allo and *Dads' Army*.

www.studiotheatreonline.org.uk

G 12

Landmark Theatre, Ilfracombe

Sun 27 July & 3 August
8.15pm

all seats: £8.50
family ticket: £28



Musical Magic

devised and directed by Lee Baxendale

Studio Theatre celebrates 10 years of its popular musical shows at the Landmark Theatre by performing a selection of memorable showstoppers from the past decade.

Join in the fun of this all-singing, all-dancing celebration of your favourite musical moments in a show for all the family.

G 8

Landmark Theatre, Ilfracombe

Sun 10 & 17 August
8.15pm

all seats: £8.50
family ticket: £28



Rockin' on Heaven's Door

This rock 'n' roll fest will send shivers down your spine with its spookily convincing portrayals of musical giants Presley, Orbison, Holly, Cochran and The Big Bopper. Joining them on stage will be guest artiste 'Jerry Lee Lewis', whose piano literally bursts into flames during *Great Balls of Fire*. Backed by a superb five-piece band, this show delivers a feel-good factor from start to finish.

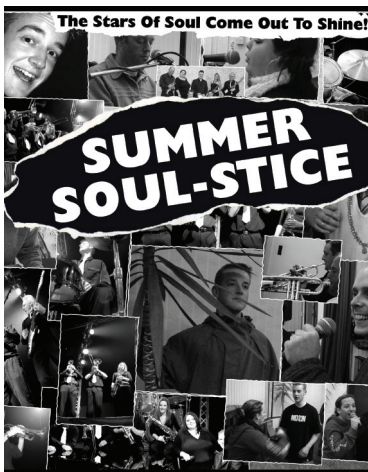
www.rockinonheavensdoor.co.uk

G 8

Landmark Theatre, Ilfracombe

Tues 15 July
8.15pm

all seats: £16 (£14)
young person: £8
family ticket: £45



Summer Soul-Stice

The stars of soul come out to shine as the Summer Soul-Stice returns to Ilfracombe. Join this whirlwind journey through the timeless ages of soul, blues, funk and motown.

With toe-tapping classics from The Blues Brothers, The Commitments, Otis Redding, Aretha Franklin and other legends of the soul fraternity, this 13-piece band love what they do and it shows in every performance.

Landmark Pavilion, Ilfracombe

Fri 18 & 25 July
Fri 1, 8, 15 & 29 August
8.15pm

all seats: £8





The Wonderful West End

The hit songs from today's West End musicals

The best of the West End's musicals arrives with this magnificent concert featuring a cast of 12. Artists from *Les Miserables*, *Phantom of the Opera*, *Grease* and *Mamma Mia*.

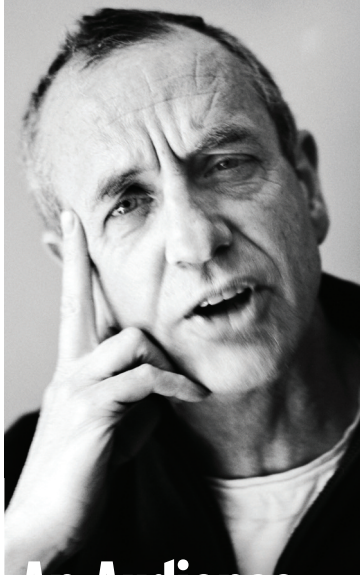
The show is now in its sixteenth record-breaking year and features over 30 fabulous West End songs including: *Grease*, *The Sound of Music*, *Wicked*, *Mary Poppins* and *Dancing Queen* to name just a few.



Landmark Theatre, Ilfracombe

Wed 16 July
8.15pm

all seats: £16 (£14.50)
young person: £8 family ticket: £46



An Audience with Arthur Smith

They don't come much grumpier than this...

Much loved broadcaster, comedian, stalwart of the Edinburgh Festival and regular contributor to BBC 2's *Grumpy Old Men*, Arthur Smith will delight with his witty observations as he sets the world to rights and takes questions from the audience. His delivery may be relaxed and sardonic but his shows are a surprisingly dark and witty treat.



Landmark Theatre, Ilfracombe

Thurs 17 July
8.15pm

all seats: £15.50

WHO SAYS ROCK 'N' ROLL CAN'T CHANGE THE WORLD?
In support of Amigos International

the BIG battle

Amigos

2008

BIGGER THAN EVER

ROUND 1:

18 Bands: The Factory, Roundswell
Saturday 5th July - £3 on the door

ROUND 2:

12 Bands: Played on Lantern FM
Saturday 12th July - *GET VOTING*

ROUND 3:

THE BIG BATTLE

6 Bands - Chosen by
Lantern FM listeners
Queen's Theatre, Barnstaple
7.30pm Wednesday
16th July
£6 each or
£21 family ticket

big night out

Line up to be confirmed
Queen's Theatre, Barnstaple
7:30pm Thursday
24th July
£10 each or
£37 family ticket

Book for July 16th & 24th £15 or £55 family ticket
Queens Theatre events book through the Box Office on 01271 324242

Sponsored by Sue Rawle Media in association with Lantern FM & Toptown Printers



lanternfm
96.2 - 97.3 FM - ONLINE

TOPTOWN PRINTERS
Quality in print naturally

www.myspace.com/suerawle



Neat Feet
Dance Academy
presents

The

Traveller's

Tale



Queen's Theatre,
Barnstaple

Sat 19th July 2008

2.30pm & 7.30pm

Tickets: £8.50 **neat**
(Under 16s) £4.50

Proceeds to
Great Ormond Street
Hospital Children's Charity
Registered Charity No 235825



Summer Showtime

The perfect holiday night
out for the whole family

After its success with *The Vicar of Dibley*, Small Pond Productions return with a brand new weekly summer show.

Packed with toe-tapping show-tunes, mystical magic and cheeky seaside comedy, Summer Showtime also features a live band plus a full-supporting company and is a truly great night out for all the family to enjoy.

G 5

Landmark Pavilion, Ilfracombe

Mon 21 & 28 July

Mon 4, 11 & 18 August

Mon 1 September

8.15pm

all seats: £7





MAMMA MIA!

MAMMA MIA!



Desperate for a sing song?

Abba Mania has been delighting audiences and selling out UK theatres since its formation in 1999. The Swedish super group may have disbanded decades ago but their music lives on. If you're looking for an excuse to party, the aqua spray-on leggings, silver platforms and outrageous hairstyles can only mean one thing...it's time to be entertained by the best music there has ever been.

Mamma Mia, Voulez Vous, Dancing Queen, Winner Takes It All and Super Trouper the hits are endless.



Landmark Theatre, Ilfracombe

Tues 22 & 29 July
Tues 5, 19 & 26 August
8.15pm

all seats: £16 (£15)
young person: £8
family ticket: £45



One Night in Vegas

The UK's leading Vegas show for all the family

Featuring performers from the West End this dazzling production features powerful musical numbers, live big band swing, beautiful dancing girls, spectacular costumes, and breathtaking illusions. Starring the outstanding singer/songwriter Martyn Lucas performing on his grand piano and accompanied by a live orchestra, there will be songs from *Phantom of the Opera*, *Copacabana* and *Dreamgirls*. Add to this Daniel Dean, a British champion of illusion, as he

performs routines only ever seen in Las Vegas.

'Magical skills to a level worthy of a Las Vegas headliner... superb range of his voice...'
Peter Foot, Editor of Encore



Landmark Theatre, Ilfracombe

Wed 23 & 30 July

Wed 6, 13, 20 & 27 August

8.15pm

all seats: £16 (£14.50)

young person: £8 (or free with every adult ticket purchased)



Jimmy Tarbuck

A master comedian at work

'In the words of the great Willie Nelson "I'm back on the road again" and looking forward to a lot of fun.'

See Jimmy take his audience on a nostalgic trip down memory lane; from being at school in the same class as John Lennon to playing golf with the legendary Bing Crosby. Using photos and video footage his stories are steeped in quick fire Liverpool wit and street-corner cheek. This is comedy for grown-ups rather than adult material.



Landmark Theatre, Ilfracombe

Thurs 24 July
8.15pm

all seats: £17.50



Sooty's Magic Wand Factory

A brand-new show

JB Entertainment & Events in association with Hit Entertainment

Sooty is surprised to receive a letter from his uncle offering him the chance to run the family business, a Magic Wand Factory. Sooty jumps at the opportunity and immediately invites his trusty gang to help him run the bizarre factory. But, in true Sooty tradition, nothing goes to plan as the gang have ideas of their own on how to help him.

Approx duration:
1hr 40mins.
(incl. interval)



Queen's Theatre, Barnstaple

Fri 25 July
1.30pm & 4pm

all seats: £8.50
young person: £7.50
family ticket: £30

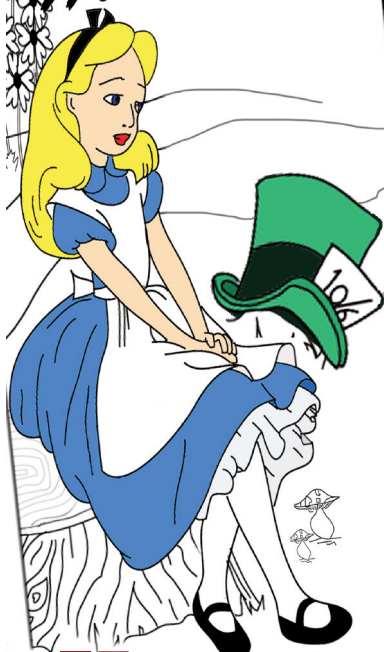
ALL STARS

Stage School

Presents the fairytale



Alice in Wonderland



G 5

Queen's Theatre, Barnstaple

Sat 26th July

2pm & 7pm

all seats: £10 (£8), young person £6



When You're Smiling

Studio Theatre's
collection of song,
dance and comedy
from the 40s.

Devised and directed by Mike Bennett, When You're Smiling brings to life the music and laughter of well-loved 40s performers including: Vera Lynn, Max Miller and Gert & Daisy plus a view of the hilarious goings-on in a familiar-looking war-time café, somewhere in France.

Come along and
enjoy the nostalgia
of your favourite
songs and acts.

www.studiotheatreonline.org.uk



G 8

Landmark Pavilion, Ilfracombe

Sat 26 July, 9 & 16 August

8.15pm

all seats: £7

family ticket: £24



The Jiving Lindy Hoppers

It's hot, it's fast, it's fun

Witness the uninhibited spirit of swing dance and jive as it was performed in its heyday in the 40s.

The Jiving Lindy Hoppers are hopping back to Devon with their quick-footed dance skills and precision jive and will be joined by guest dancers from the North Devon Theatres' Make the Move Performing Arts, (see page 40)



G ed **6**

Landmark Theatre, Ilfracombe

Thurs 31 July
8.15pm

all seats: £10 (£8)
young person: £5
family ticket: £25



Harry and His Bucketful of Dinosaurs

1,2,3...jump Harry

This brand-new show takes you into the imagination of five-year-old Harry, whose toy dinosaurs are as real to him as the bucket he carries them in. By jumping into his bucket, Harry transports himself and all the boys and girls into Dino World, where his six dinosaur toys become full-sized dino playmates, ready for all sorts of funny and exciting adventures.

Based on the bestselling children's book and top rated television show, suitable for 3-8 year olds.



G **3**

Landmark Theatre, Ilfracombe

Fri 8 & 22 August
1.30pm & 4pm

all seats: £9 family ticket: £32



One Night of Elvis

In 1977 the world lost its biggest music star the King of rock 'n' roll, Elvis Presley. More than 30 years later he remains as popular as ever.

In 2003 GMTV crowned Heath Ashton *Britain's Best Elvis* after he shone through 7000 other entries. This is your chance to see Heath and his fantastic band, Midnight America in action as they perform over two hours of Elvis' classic hits.

'If you can see only one Elvis show this year, see this one' President of the official Elvis Presley fan club of Great Britain



Landmark Theatre, Ilfracombe

Tues 12 August

8.15pm

all seats: £16.50

young person: £8.50

family ticket: £45



Sunwest Festival

The Landmark Beer Festival's younger sister enjoys as much popularity and perhaps even more sunshine as it spans the August Bank Holiday Weekend. With high quality performances from some of the region's top artistes including; The Jenna Witts Trio, Sonic Fusion, Spoonful, The Branwood Project as well as the Bands Day supported by SoundPad.

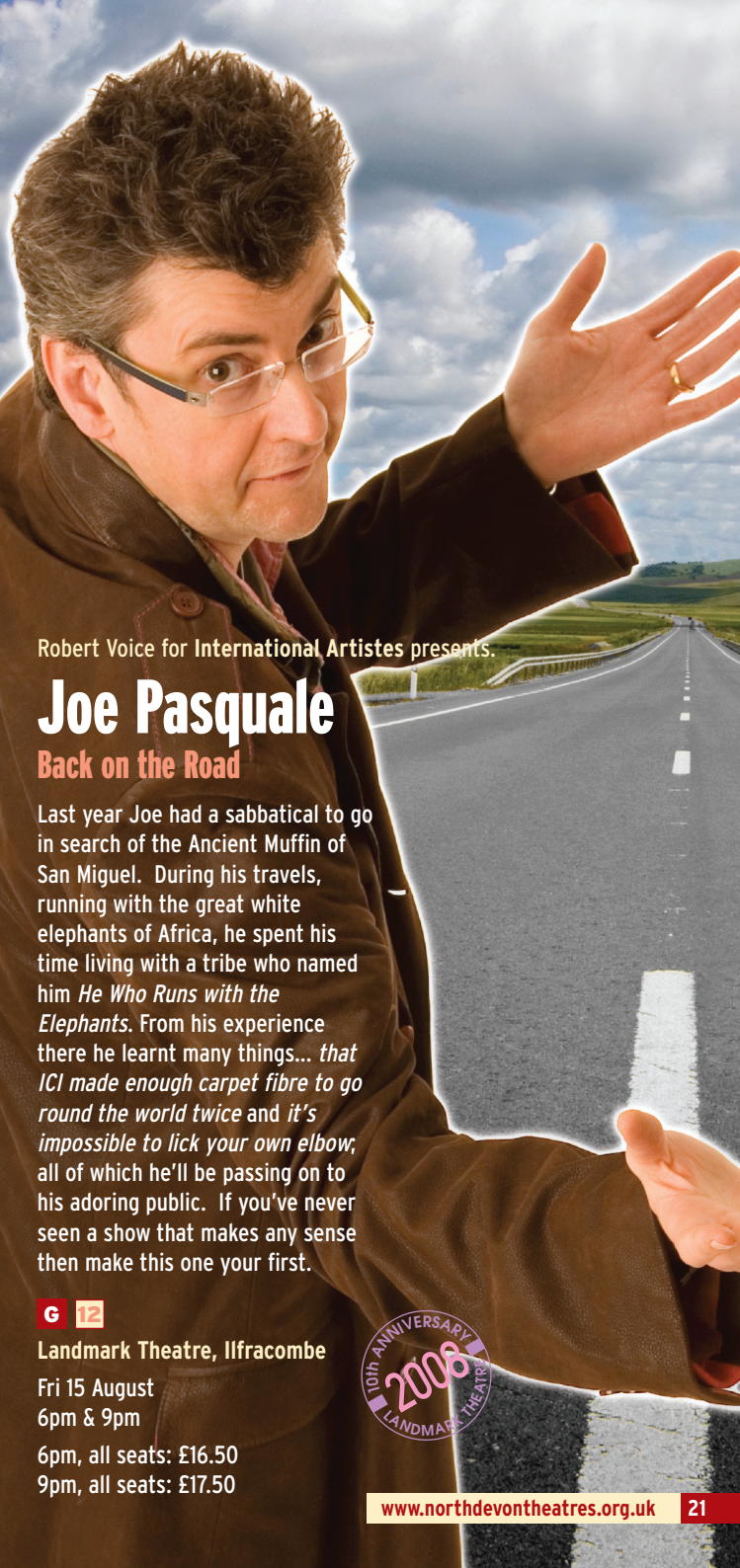
All this and a healthy mix of real ale and entertainment, where else would you be?



Landmark Theatre, Ilfracombe

Fri 22 to Mon 25 August

admission: free



Robert Voice for International Artistes presents.

Joe Pasquale

Back on the Road

Last year Joe had a sabbatical to go in search of the Ancient Muffin of San Miguel. During his travels, running with the great white elephants of Africa, he spent his time living with a tribe who named him *He Who Runs with the Elephants*. From his experience there he learnt many things... *that ICI made enough carpet fibre to go round the world twice and it's impossible to lick your own elbow*, all of which he'll be passing on to his adoring public. If you've never seen a show that makes any sense then make this one your first.

G 12

Landmark Theatre, Ilfracombe

Fri 15 August
6pm & 9pm

6pm, all seats: £16.50

9pm, all seats: £17.50





The Syd Lawrence Orchestra

Strictly big band

The 'best big band in the land' directed by Chris Dean, brings you a concert packed with your favourite big band sounds.

Hear the music of the swing era brought back to life with the youthful verve that made it the smash hit pop music of its day. Featuring the music of Glenn Miller, Count Basie, Tommy Dorsey, Neal Hefti, Billy May, Frank Sinatra, Ella Fitzgerald and many more.

'The best band currently playing this music anywhere in the world' Malcolm Laycock BBC Radio 2.



Queen's Theatre, Barnstaple

Fri 22 August
7.45pm

all seats: £15 (£13)
upper circle: £13 (£11)



Jive Talkin'

The Bee Gees Story

With their stunningly convincing vocals, this show promises an evening of everything Bee Gees and features the uncannily convincing vocals of brothers Darren and Gary Simmons as Barry and Robin Gibb and Jarrod Loughlin as Maurice Gibb.

Perfectly recreating the Gibb brother's extensive repertoire special guest performers will also be featured singing many of the hits the Bee Gees wrote for other artistes such as Barbara Streisand, Celine Dion and Diana Ross.



Landmark Theatre, Ilfracombe

Tues 2 September
8.15pm

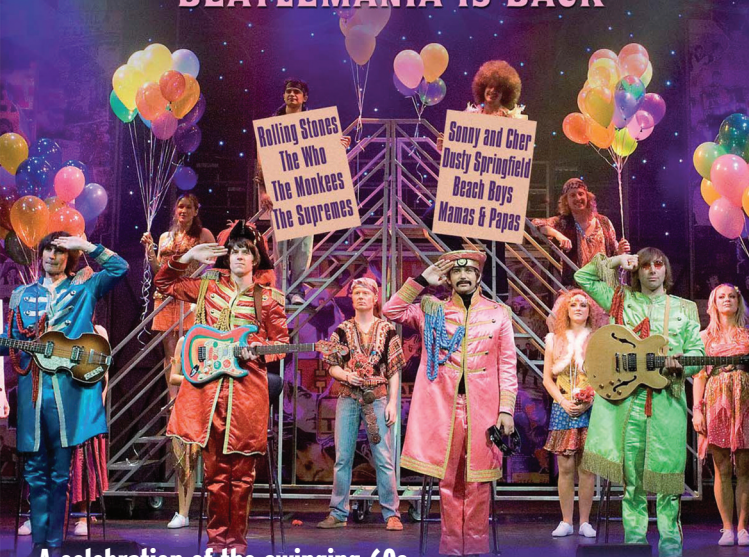
all seats: £16.50 (£15)

DIRECT
FROM NEW YORK

A FAB CELEBRATION OF THE SWINGING SIXTIES

ALL YOU NEED IS LOVE

“BEATLEMANIA IS BACK”



A celebration of the swinging 60s

The Fab Four and some of their friends are back; hang on to your seats, the party's about to begin.

Join in and be taken on a magical mystery tour to the 60s, where peace, love and flower power ruled the day. Featuring the greatest hits from The Beatles and other 60s icons including: The Kinks, The Rolling Stones, The Beach Boys, The Monkees, Bob Dylan, Mamas and Papas and many more.

G F S 

Queen's Theatre, Barnstaple

Thurs 28 to Sat 30 August

Thurs & Fri 7.45pm,

Sat 6pm & 9pm

Thurs eve, all seats: £19

Fri eve, all seats: £21

Sat 6pm, all seats: £20

family ticket: £60

Sat 9pm, all seats: £22

Friends' ticket offer,

Thurs eve, all seats: £12



North Devon Folk Festival

The Landmark, Seafrost, Ilfracombe

Fri 5th September, 8pm

Friday night in the Pavilion is free. This is a showcase for well known North Devon songwriters, traditional musicians and new wave folk including Tom and Barbara Brown, Al and Pam Cruse, Ian Hudson, Martyn Babb and a special guest.

Sat 6th September, 1pm

Melanie
Trans-Global Underground
Tarras

John Tams & Barry Coope
Devon Sproule Band
Bella Hardy Trio
Annabelle Chvostek Trio
Martha Tilston
Steve Tilston
Debby McClatchy
The Dambuskers
The Singing Sous Chefs
Chris Millington



Landmark Theatre, Pavilion and Green

Fri 5th to Sun 7th Sept

weekend ticket: £50

day tickets: £27.50

afternoon ticket: £13 (valid until 6.30pm)

evening ticket: £19

accompanied children: £10

young person, under 12: free

Early Bird Discounts (available until Fri 11 July)

Staying: For all travel, camping deals and other accommodation enquiries see our website or contact the Ilfracombe TIC on 01271 863001 or email info@visitilfracombe.co.uk





Sun 7th September, 1pm

Bellowhead
Eddi Reader

Tarras

Last Night's Fun

Annabelle Chvostek Trio

Debby McClatchy

Jenna

Dragonfly

The Dambusters

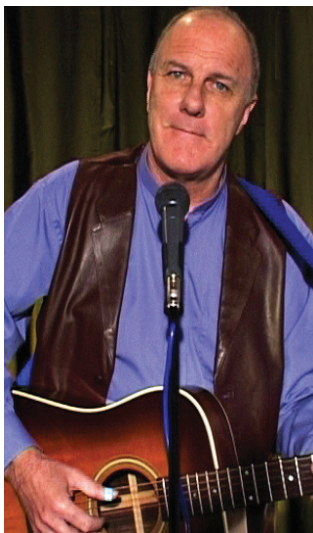
Fiddlebix

The Singing Sous Chefs

Chris Millington

NORTH DEVON
FOLK
FESTIVAL 08

A North Devon Festival event produced by North Devon Theatres and organised in conjunction with Ken & Sue Bradburn of Emerging Music.



Richard Digance

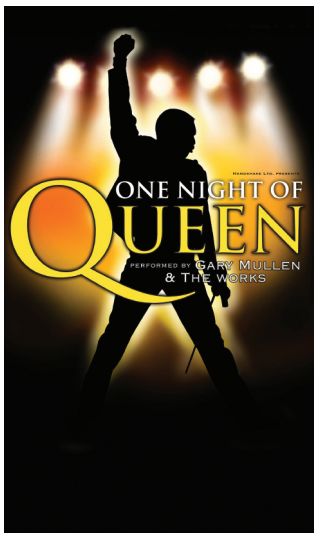
From performing to an audience of just eight in the Falklands to a mere half a million at Knebworth with The Beach Boys, Richard has survived all the trends in comedy and music and still remains one of Britain's most unique entertainers. Contented with his songs, rhymes and stories like nobody else he is equally proud of his BAFTA nomination, a Gold Award from the British Academy of Songwriters, a SONY Radio Award and nine letter words on *Countdown*.



G 14

Landmark Theatre, Ilfracombe

Tues 9 September
8.15pm
all seats: £15 (£13)



One Night of Queen

He will rock you...

One Night of Queen is a stunning live two hour concert that recreates and celebrates the music of Queen.

Performed by Gary Mullen, who won TV's *Stars in their Eyes* in 2000 with his flawless interpretation of the great Freddie Mercury, he is joined on stage with his touring band The Works.

'As tribute bands go, there can be none better than this. Superb.'
Nick Hyde, Blackpool Gazette

G 8

Queen's Theatre, Barnstaple

Thurs 11 Sept
7.45pm
all seats: £16.50 (£15.50)



Jethro 2008 Tour

For one performance only

The legendary Cornish comic returns with another bout of heavyweight belly-crunching comedy.

A tad politically incorrect at times and rated by many as the funniest man in the land. If you don't laugh at this show, you need psychological help

*Contains adult material.

G 18

Queen's Theatre, Barnstaple

Fri 12 September

7.30pm

all seats: £18



Double Take Illusions

Do not try this at home

Join Jane-Elizabeth and Dave Williams, with guest artiste Debbie Hadley, for an evening of magic, illusion, dance and song with surprises, comedy and an element of risk for both cast and crew.

Have a drink at the bar, sit back and relax, if you can; anything could happen and almost certainly will.

STOP PRESS - As we go to print there is promise of an illusion never before performed on a human being.

G 6

Landmark Pavilion, Ilfracombe

Fri 12 September

8pm

all seats: £8



rainbow

Live!



Written by
Ray Tizzard & Jonathan Blazer

JBC **FREMANTLEMEDIA**
entertainment & events

Stars of the classic children's television programme *Rainbow* take to the stage in this brand new live theatre show.

Zippy's life suddenly changes when he wins a hit record contract with Yellow Peril Records. With only a few hours to get Zippy ready before he leaves the Rainbow House, the gang pull together to turn Zippy into a star.

When his record is a huge hit and earns him superstar status Zippy starts to miss his Rainbow friends and has to decide where and who he'd rather be.

The show features all the fun ingredients associated with the popular *Rainbow* TV show and includes lots of sing-along songs, games and giggles.

Duration: 1hr 40mins

G 3

Queen's Theatre, Barnstaple

Sat 13 September

1.30pm & 4pm

all seats: £8.50 young person:
£7.50 family ticket: £30



Direct from the London Palladium



The Image of Cliff Richard

Kytsun Wolfe is celebrated by his peers as a consummate professional both on and off the stage and is held in high esteem by the fans and media alike for his uncanny portrayal of Cliff.

Audiences all across the country have proclaimed him as the very best in his field, and are amazed by his ability to make them believe that they are at an actual Cliff concert.

'An amazing resemblance and a brilliant performance, Cliff would be stunned'

Bruce Welch, The Shadows



Landmark Theatre, Ilfracombe

Thurs 18 September
8pm

all seats: £12.50 (£11.50)



Don Cossacks State Dance Company

Direct from Russia, this internationally acclaimed company of 40 dancers and musicians is widely acknowledged as Russia's premiere Cossack Dance Troupe. The Don Cossacks present a dynamic production packed with energy, passion and excitement, all performed to a live orchestra. The dancers will amaze you with their incredible acrobatic feats, skilful dexterity and colourful costumes in this breathtaking dance spectacular.



Queen's Theatre, Barnstaple

Fri 19 September
7.45pm

stalls/dress circle: £21.50 (£20)
upper circle: £19.50 (£18)
young person: £15

The Classical Circle 08-09

Book for all six concerts in this new series before 31 July 08 and be eligible to join our exclusive Classical Circle group. As well as enjoying the classical series, as a member you will also receive a

complimentary programme for each concert and we invite you to enjoy a complimentary welcome drink at the Nikolai Demidenko concert on Thursday 18 September.



Nikolai Demidenko

(Piano)

Nikolai Demidenko studied at the Moscow Gnessin School and at the Moscow Conservatoire; he was a medalist at the 1976 Montreal International Piano Competition and the 1978 Tchaikovsky International Competition. He taught at the Yehudi Menuhin School in Britain where he has been a resident since 1990.

'Demidenko's razor-sharp articulation and immaculate dexterity are complemented by the finest musical grace and individuality' Gramophone

Chopin

Barcarolle Op.60
Sonata No.3 in B Minor, Op.58
24 Preludes, Op.28



Queen's Theatre, Barnstaple

Thurs 18 September, 7.30pm
stalls/dress circle: £17 (£15.50)
front stalls/upper circle: £15.50 (£14)
young person: £5



Badke String Quartet

Heather Badke (Violin)

Emma Parker (Violin)

Matthew Jones (Viola)

Jonathan Byers (Cello)

The Badke Quartet, formed in 2002, is widely recognised as one of Britain's finest young string quartets. Recipients of the Leverhulme Junior Chamber Music Fellowship at the Royal Academy of Music from 2003-05, the quartet has received widespread acclaim for its energetic and vibrant performances.

Haydn - Quartet Op.20 No.5 in F Minor

Mozart - Quartet No. 19 in C Major 'Dissonance'

Schubert - Quartet in D Minor 'Death and the Maiden'



Queen's Theatre, Barnstaple

Sat 11 October, 7.30pm
stalls/dress circle: £17 (£15.50)
front stalls/upper circle: £15.50 (£14)
young person: £5

Subscription offer for all six concerts:

stalls/dress circle:

£96 (£87)

front stalls/upper circle:

£87 (£78)

or for the Philharmonia plus four other concerts:

stalls/dress circle:

£85 (77.50)

front stalls/upper circle:

£77.50 (£70)



Philharmonia Orchestra

Shuntaro Sato (Conductor)
Soloist Min-Jung Kym (Piano)

The Philharmonia Orchestra is acknowledged as the UK's foremost musical pioneer; with an extraordinary recording legacy, the Philharmonia leads the field for its quality of playing, and for its innovative approach to audience development, residencies, music education and the use of new technologies in reaching a global audience.

Mendelssohn - Overture
Midsummer Night's Dream
Beethoven - Piano Concerto No.4 in G Major, Op.58
Dvorak - Symphony No.7 in D Minor, Op.70



Queen's Theatre, Barnstaple

Sat 8 November, 7.30pm

stalls/dress circle: £23 (£21.50)

front stalls/upper circle: £21.50 (£20)

young person: £5



Sinfonia Classica

Hans-Peter Hoffman (Conductor)
David Pyatt (Horn)

The Queen's Theatre's resident orchestra return and are joined by David Pyatt, one of the youngest winners of the BBC Young Musician of the Year award.

In 1996 Gramophone magazine announced David as their Young Artist of the Year; his subsequent solo career has led him to perform at the BBC Proms and Edinburgh Festival.

Mozart - Divertimento K.251
Mozart - Horn Concerto No.2 in E flat
Cherubini - Sonata for Horn and Strings
Haydn - Symphony No.45 'Farewell'



Queen's Theatre, Barnstaple

Thurs 22 January 09, 7.30pm

stalls/dress circle: £17 (£15.50)

front stalls/upper circle: £15.50 (£14)

young person: £5



Academy of St Martin in the Fields Chamber Ensemble

The Academy of St. Martin in the Fields Ensemble was formed in 1959 by a group of 11 enthusiastic musicians whose aim was to perform in public without a conductor. Their first three recordings led to a succession of long-term contracts, and the Academy quickly took their place among the most recorded ensembles in history.

Programme includes:

Mendelssohn - Octet in E flat Major, Op.20

Brahms - Sextet in B Flat



Queen's Theatre, Barnstaple

Sat 7th March 09

7.30pm

stalls/dress circle: £17 (£15.50)

front stalls/upper circle: £15.50 (£14)

young person: £5



Sinfonia Classica

Eva Stegeman (Director)

Tasmin Little (Violin)

To close our 2008-09 season, the Sinfonia Classica is joined by Tasmin Little.

In addition to a flourishing career as violin soloist, which has taken her to every continent of the world, Tasmin has further established her reputation as Artistic Director of two Festivals: Delius Inspired and Swan Spring Sounds.

Vivaldi - Four Seasons

Tchaikovsky - Serenade for Strings in C Major, Op. 48



Queen's Theatre, Barnstaple

Fri 27 March 09

7.30pm

stalls/dress circle £17 (£15.50)

front stalls/upper circle £15.50 £14

young person: £5



Murder in Retirement

The Foul Players host another murder mystery dinner

Kilham Hall, with its faded gentility now belongs to Noah Hart who runs it as a residential home for those who find the rigours of life too much.

They are ruled with a rod of iron by Matron Shona Mercy who is assisted by sloppy care assistant, Daffy O'Dill. When a body is found, is Matron guilty or could it be one of the residents? Are they all what they seem?

Dressing up is optional but there will be a small prize for the best dressed man or woman.



12

Landmark Pavilion, Ilfracombe

Fri 19 September
7pm

£20 per person to include three-course meal



Russell Howard

Dingledodies

Still unfashionably fond of humanity, the star of *Mock The Week* and BBC6 Music, Russell Howard is back with his fifth new stand-up show following three sell-out tours in the space of one year.

'You'll find more laughs here than many comedians manage in an entire career' The Metro.

'One of the most sought-after acts in British stand-up.' The Daily Telegraph

www.russell-howard.co.uk

G 15

Queen's Theatre, Barnstaple

Wed 24 September
7.45pm

all seats: £15



Think Floyd

2008 tour

All the atmosphere, visual magnitude and musical excellence of Pink Floyd is re-created live onstage by Think Floyd, one of the UK's most successful and enduring tribute bands.

Rick Benbow (keyboards), Steve Farmer (drums), Lewis Hall (bass & guitars) and Richard Morse (guitars) will be presenting an eclectic selection of music from the entire breadth of the Pink Floyd discography. In particular expect to hear two especially iconic classics; *Atom Heart Mother* and *Echoes*.

www.thinkfloyd.net



**Queen's Theatre,
Barnstaple**

Fri 26 September
7.45pm

all seats: £14.50 (£13)



The Johnny Cash Story

Spend the evening in the
company of a music legend

Roger Dean captures the spirit of Johnny Cash ensuring our memories of him are in very safe and capable hands. This two-hour nostalgic concert features all of Cash's classic songs. Joining Dean on stage will be the Lazy Boys band.

*A Boy Named Sue, Ring
of Fire, I Walk the Line...*



Landmark Theatre, Ilfracombe

Thurs 25 Sept
8pm

all seats: £14.50 (£13.50)





The Reduced Shakespeare Company

The Bible: The Complete Word of God (abridged)

It's apocalypse now as the three cultural guerrillas of The Reduced Shakespeare Company set their reductive sites on The Bible. Can bolts of lightning be far behind?

Yes, it's an affectionate, irreverent roller coaster ride from fig leaves to final judgment as the boys tackle the great theological questions: Did Adam and Eve have navels? Did Moses really look like Charlton Heston? And why isn't the word 'phonetic' spelled the way it sounds?

Whether you are Catholic or Atheist, Muslim or Jew, Protestant

or Purple People Eater, you will be tickled by the RSC's romp through old time religion. Remember... someone is watching.

'There is no doubt about it, these three lads are in a league of their own when it comes to vivid originality both in the show itself and its performance'

Jack Tinker - The Daily Mail



Queen's Theatre, Barnstaple

Sat 27 September

7.45pm

all seats: £15 (£13)

Award-winning Middle Ground Theatre Company
presents

"A TRIUMPHANT PRODUCTION"
Brighton Argus



**"A THREE-ACT CLASSIC
PERFORMANCE"**
Lancashire Evening Post

All-star cast to be announced
Directed and designed by Michael Lunney



G F  **pr 12** 

Queen's Theatre, Barnstaple

Tues 30 Sept to Sat 4 Oct
Eves 7.45pm

Thurs & Sat matinees 2.45pm

Tues, all seats: £15,

Wed to Sat, stalls/dress circle: £18 (£17)

front stalls/upper circle: £16 (£15)

Mats, all seats: £10.50

Friends' ticket offer, Wed all seats: £10

Future Events

Talon
The Best of the Eagles

Queen's Theatre

Fri 3 October, 7.45pm

Led Zepp

Landmark Theatre

Sat 11 October, 8pm

**An Evening with
Pam Ayres**

Queen's Theatre

Tues 14 October, 7.45pm

**An Evening with
Charlie Landsborough**

Queen's Theatre

Sat 18 October, 7.45pm

Cream of Clapton

Landmark Theatre

Sat 25 October, 8pm

Shakespeare for Kidz

Queen's Theatre

Thurs 6 & Fri 7 November

Thurs, 1.30pm & 7.30pm

Fri, 10am & 1.30pm

Paddy McGuinness

Queen's Theatre

Thurs 27 November, 7.45pm

North Devon Theatres in association
with the Hiss & Boo Company

**Book now for a fabulously funny
fairytale family pantomime...**

JACK and the BEANSTALK

STARRING

TODD CARTY

(EastEnders & Grange Hill)

as

FLESHCREEP

the giant's evil henchman

**QUEEN'S THEATRE
BARNSTAPLE**

**Friday 12th December 2008
to Sunday 4th January 2009**

01271 324242

Sponsored by

ST. JOHN'S
GARDEN CENTRE
& NURSERIES



or visit our website at www.northdevontheatres.org.uk

Exhibitions

Dave Green

Constructed Photographs

Queen's Theatre, 2 July to 9 August

The link connecting this diverse set of images is the singular vision of their making, through the constructing of many frames to make one image.

Stephen Ring

Inspiration of Glorious Devon

Landmark Theatre, 7 July to 7 September

The love of being close to the coast and surrounding landscape gives the opportunity and inspiration to utilise the feeling of open space, light and colour which nature freely provides.

Original oil on canvas: *Scarlet Night*

Tim Saunders

My backyard and beyond

Queen's Theatre, 12 August to 13 September

Paintings from the North Devon landscape by this local artist.

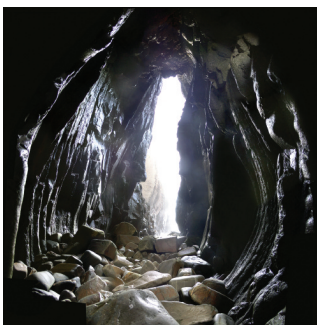
Visit Tim's website at timsaundersart.co.uk

Lani Shepherd

Glorious Glass

Landmark Theatre, 8 September to 12 October

A stunning exhibition of new work by one of Devon's finest stained glass Artists.



Museum of Barnstaple & North Devon



A great way to get to know North Devon's landscape, history, people and stories.

Creative Castles

5 July - 30 August

An exhibition of artworks and family activities from the Royal Albert Memorial Museum & Art Gallery, Exeter. Learn all about Devon's castles and how to defend them!

A Harvest of Jugs

6 September - 8 November

An opportunity to see Exeter Museum's fine collection of North Devon Harvest Jugs, and a fresh look at the work of the Fishley family of potters over the last 200 years.

Free admission

Opening times

Mon to Sat, 9.30am to 5pm

The Square, Barnstaple,
North Devon EX32 8LN
Tel: 01271 34 67 47

museum@northdevon.gov.uk
devonmuseums.net/barnstaple

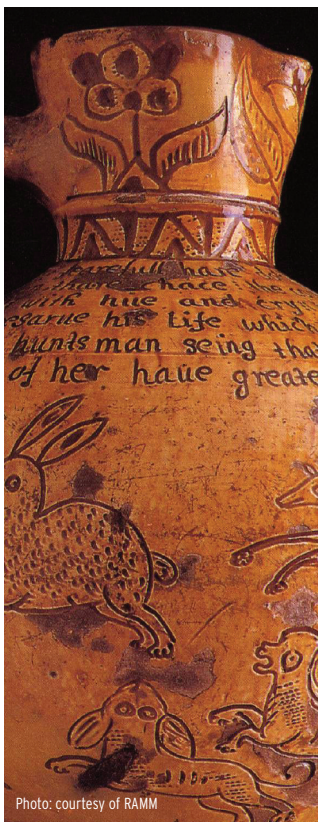


Photo: courtesy of RAMM

Take Part



We believe in helping young people to realise their arts potential by gaining experience in our various schemes and projects. By participating in Make the Move classes and our workshops, it is possible to get further involved in residencies, performances (including being selected for our pantomimes), theatre trips and work experience.

If additional juvenile company members are required for this year's panto (Jack and the Beanstalk), they will be selected from the Musical Theatre residency; see below for details.

Jiving Lindy Hoppers residency

Back by popular demand, Russell and Carolene swing back to Devon.

Mon 28 to Thurs 31 July

Adult workshop Tues 29 July
7pm to 9pm
Fee: £5

No experience is necessary but a sense of humour is vital.

Juniors 8 to 12 years
Seniors 13 years and above

Participant fee: £30
Associates: £15

Mon to Wed:
Juniors and seniors 10am to 1pm
Associates only: 2pm to 5pm
Thurs: 2pm to end of evening show





Musical Theatre Residency

Nigel Brooks and Gerry Zucharello from Laine Theatre Arts, lead this exciting project to create works from West End and Broadway productions.

Tues 26 to Sat 29 August

Tues to Fri 10am to 5pm (everyone)
Sat 2pm to 5pm with 6pm call for performance

Demonstration of works in progress

Sat 29 August at 7pm

Tickets: £2 in advance
£3 on the door

Juniors 8 to 12 years
Seniors 13 years and above

Participant fee: £50
Associates: £15

Dance, Cheer & Acrobatics

Mon 4 to Thurs 7 August
10am to 4pm

Ages 8 and above

£25 per person
Free to Associates
No experience necessary

Carnival week

Working with professional practitioners from the world of music, props, parade, and procession we will be creating an explosion of animal magic for Ilfracombe Carnival.

Costume, mask making and African dance and drumming.

Mon 18 to Wed 20 August
10am to 4pm

Thurs 21 August
2pm to end of Carnival procession

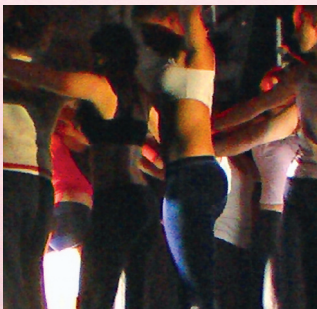
Ages 8 and above £25 including costume hire and props. You will need to provide footwear as advised.

Make the Move

All classes: £3
£30 per term

Registrations now open for classes in drama, musical theatre, modern, jazz, tap and ballet.

New term starts Mon 8 September.



Friends of the Theatres

Join today and start receiving a whole year of benefits...

Priority notice

Receive advance notice about all our shows and book before everyone else.

Discounts on ticket prices

Exclusive discounts on many of the Theatres' shows.

Meet the stars

A chance to meet the performers at our post-show receptions.

Free programme

Receive a free programme on selected shows.

Social events

Our Friends' committee are always arranging social events from wine tasting evenings to quiz nights.

Annual backstage tours

Come and see how the theatre operates behind the scenes and discover some of the theatres' secrets.

Call Friends' Organiser **Deborah Cooke** on 01271 86 92 12 or email debbie.cooke@northdevontheatres.org.uk for an application form or pick one up at the Box Office.



Theatre information

Central Box Office: 01271 32 42 42

Queen's Theatre

Boutport St, Barnstaple EX31 1SY
Admin telephone: 01271 32 73 57
Fax: 01271 32 64 12

The Queen's Theatre is located in Boutport Street, on the corner of Butchers' Row, with parking close by at Queen Street and Bear Street car parks. If travelling from outside the area follow the signs for the Town Centre.

Landmark Theatre

Wilder Rd, Ilfracombe EX34 9BZ
Admin telephone: 01271 86 56 55
Fax: 01271 86 77 07

The Landmark Theatre is located in Wilder Road on the Seafront, with public parking available, both on site and close by. Follow the signs for the Seafront and The Landmark is on your left.

Please carshare or use public transport wherever possible. For more information visit www.carsharedevon.com

Public Transport

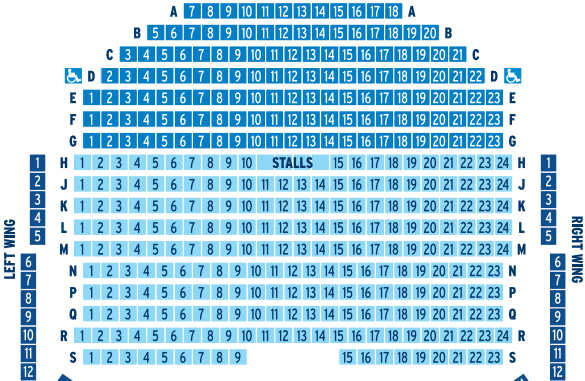
The main bus station in Barnstaple is situated within a 5 minute walk of the Queen's Theatre. Stagecoach 103 stops on Ilfracombe High Street. First 3, 3A, 3B and 30; Exmoor Coastlink 300 stop outside the Landmark

The nearest train station is in Barnstaple for more information visit www.nationalrail.co.uk

Telephone Traveline 0871 200 22 33 or visit www.traveline.org.uk

QUEEN'S THEATRE STAGE

FRONT STALLS



DRESS CIRCLE



UPPER CIRCLE

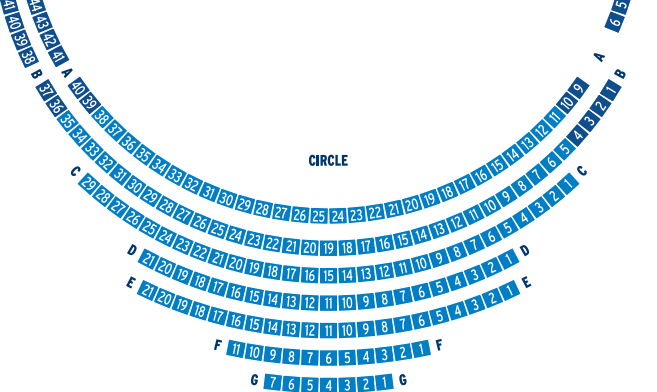


LANDMARK THEATRE STAGE

STALLS



CIRCLE



How to book & Access

In person

In the foyer of the Queen's Theatre or the Landmark Theatre.

Open Monday to Saturday, 10am to 5pm and Sundays, April to October (later on performance nights).

By telephone

North Devon Theatres Box Office 01271 32 42 42. Open as stated above. Visa, Mastercard, Maestro & Solo accepted. Unpaid reservations held for 3 days.

By post

North Devon Theatres Box Office, Boutport Street, Barnstaple EX31 1SY. Please include booking requirements and make cheque payable to 'North Devon Theatres Trust'. Add £1 if you would like your tickets posted to you.

Online

Visit our web site for secure online booking, the best seats remaining will be allocated.

Refunds

Tickets cannot be exchanged or refunded.

However we will attempt to re-sell tickets on any sold-out shows, a charge of 10% is made for this service.

Gift vouchers

Gift vouchers are available for purchase from the Box Office and can be used for shows at the Queen's Theatre and Landmark Theatre.

Special offers

Only one offer applies to any one ticket and must be requested at time of purchase.

Ticket concessions

(shown in brackets) apply to children, full-time students, claimants, over 60s and registered disabled.

Family ticket

When available applies to a family of 4 with max 2 adults.

Young person's ticket

On selected performances. Applies to children 16 & under.

Stand-by tickets

Any remaining unsold seats may be purchased for half the top price either by phone or in person after 6pm on the day of

performance. Tickets must be paid for at time of booking. This offer is not available on all shows.

Young people admissions policy

Infants aged 18 months or under may be held on their parent or guardian's lap with no charge. In the interest of all our customers an infant must remain on the accompanying adult's lap at all times throughout the performance.

The infant in arms ticket is available for pantomime and all children's events.

Unaccompanied children

Unaccompanied children of 12 years and over are welcome at most performances (except those with an age guidance limit indicated). Customers must ensure that if children are attending without a parent/guardian that they have safe travel to and from the theatre.

Children aged under 12 must be accompanied by an adult.

Access

The following information may prove useful if you have specific access requirements; however it is not exhaustive. Please do contact a member of our team if you have any queries. We are happy to assist.

Physical access

There are wheelchair spaces available in the stalls for every performance at the Queen's Theatre, accessed via a ramp from street level. The Gallery Cafe is situated on the first floor and is accessible by lift.

The Landmark Theatre offers wheelchair spaces for all performances. The Theatre, Pavilion and Rendezvous Café are all fully accessible. There is disabled parking on the Wilder Road car park next to the Landmark at the front of the building.

Both venues have accessible toilet facilities.

North Devon Theatres' minibus group

If you have a mobility problem, a disability that prevents you from getting out and about or if you do not feel safe driving at night, we now have the North Devon Theatres' Minibus Group. This service is able to pick you up from your home and take you to either the Queen's or Landmark Theatre to see the shows of your choice.

Covering the Woolacombe, Ilfracombe, Combe Martin and Berrynarbor areas, for a small fee, the Ilfracombe Community Transport bus get you there; see the bus logo on the relevant shows. To register for this service or for any further information please contact Janice Banks on 01271 86 56 55.

Hearing impaired

Both venues are fitted with an infra-red hearing system - please reserve equipment at time of booking.

Visually impaired

Guide dogs are welcome at both the Queen's Theatre and the Landmark Theatre.

For other access requirements or further information please contact the Front of House Manager on 01271 32 73 57 or email foh.qt@northdevontheatres.org.uk

Parking

There is limited disabled parking at the Queen's Theatre opposite the theatre entrance in Boutport Street and Butchers Row.

Shopmobility

Shopmobility is a scheme which lends manual wheelchairs, powered wheelchairs and powered scooters to members of the public with limited mobility to shop and to visit leisure and commercial facilities within Barnstaple and Ilfracombe. For more information phone 01271 32 88 66 or visit www.justmobility.co.uk.

Supporting your Theatre

Sponsor a seat and help support us...

North Devon Theatres have created a unique opportunity for you to sponsor a seat at either the Queen's or Landmark Theatres for just £150, for five years.

You will receive a plaque with your chosen inscription attached to the back of the seat of your choice, plus a personalised certificate and priority booking on all shows.

For more details contact the Box Office on 01271 32 42 42

North Devon Theatres' Trust is a registered charity and a not-for-profit company limited by guarantee. We can only provide the range of cultural services that we do for North Devon, including our extensive arts education programme, through the support of our funders and the business community. Grateful thanks go to all our supporters.

Business Associates

If you would like to know more about our Business Associate Scheme, wish to hold a seminar at one of our venues or organise a product launch, then we can help.

For information on this or if you wish to advertise in one of our programmes, please contact our sales executive

George Hammett on 07974 834291



Westerly Barnstaple





10th ANNIVERSARY
JUNE 08

NORTH DEVON Festival

30 days in June, over 200 diverse events



Barnstaple Colourscape Festival
Artists of the Silk Road
Appledore Visual Arts Festival
The LLAMA Music Festival
Ilfracombe Victorian Celebration
GoldCoast Oceanfest
The Bad Plus
Fringe Theatrefest
The Station
Simon Amstell
Art Trek Open Studios
Wildlife Festival
Blood Brothers
Barnstaple Fringe
Paul Merton's Impro Chums
Billy Cobham & Asere
Tag Rugby Festival
Wild West Country
Tarka Tennis Weekend
Another Fine Mess . . . and so much more

Major funder



Funders

in partnership with
Devon County Council



Principal Sponsor



01271 32 42 42 www.northdevonfestival.org