

JULY-SEPTEMBER 2009 

# NORTH DEVON THEATRES



 NORTH DEVON  
FESTIVAL

 NORTH DEVON  
MUSEUM

# Diary

## June

### Cabaret

Mon	15		7.30pm	QT
Tues	16		7.30pm	QT
Wed	17	2.30pm	7.30pm	QT
Thurs	18	2.30pm	7.30pm	QT
Fri	19		7.30pm	QT
Sat	20	2.30pm	7.30pm	QT

### Paddy Ashdown

Wed	24		7.45pm	QT
-----	----	--	--------	----

### John Mayall

Fri	26		7.45pm	QT
-----	----	--	--------	----

### Dennis Rollins Badbones & Co

Sat	27		7.45pm	QT
-----	----	--	--------	----

## July

### Lennon - The Legend

Fri	3		8.15pm	LT
-----	---	--	--------	----

### Angelina Ballerina's Big Audition

Fri	3		6.00pm	QT	
Sat	4	11.00am	2.00pm	5.00pm	QT

### The Wizard of Oz

Tues	7		7.30pm	QT
Wed	8		7.30pm	QT
Thurs	9		7.30pm	QT
Fri	10		7.30pm	QT
Sat	11	2.00pm	7.30pm	QT

### Crash - Sea to Shore

Fri	10		8.15pm	LT
-----	----	--	--------	----

### Funny Money

Sun	12		8.15pm	LT
Sun	19		8.15pm	LT

### Roll Out the Barrel

Wed	15		8.15pm	LT
-----	----	--	--------	----

### That'll Be The Day

Thurs	16		8.15pm	LT
-------	----	--	--------	----

### Comedy Club at the Seafront

Thurs	16		8.30pm	LP
Fri	18	Sept	8.30pm	LP

### Dance 2009

Sat	18	2.00pm	7.00pm	QT
-----	----	--------	--------	----

### Grimethorpe Colliery Band

Sun	19		3.00pm	QT
-----	----	--	--------	----

### Elvis Rocks

Tues	21		8.15pm	LT
------	----	--	--------	----

### Young Musicians' Showcase

Wed	22		8.00pm	GC
-----	----	--	--------	----

### One Night in Vegas

Wed	22		8.15pm	LT
Wed	29		8.15pm	LT
Wed	5	Aug	8.15pm	LT
Wed	12	Aug	8.15pm	LT
Wed	19	Aug	8.15pm	LT
Wed	26	Aug	8.15pm	LT
Wed	2	Sept	8.15pm	LT

### Phil Cool

Thurs	23		8.15pm	LT
-------	----	--	--------	----

### Café Cabaret

Thurs	23		8.15pm	LP
Sat	8	Aug	8.15pm	LP
Sat	15	Aug	8.15pm	LP
Sat	22	Aug	8.15pm	LP
Thurs	3	Sept	8.15pm	LP

### Magic at the Movies

Fri	24		8.15pm	LP
Fri	31		8.15pm	LP
Fri	7	Aug	8.15pm	LP
Fri	14	Aug	8.15pm	LP
Fri	21	Aug	8.15pm	LP
Fri	4	Sept	8.15pm	LP

### Young Stars of the Future

Sat	25		7.00pm	QT
-----	----	--	--------	----

### Hobson's Choice

Sun	26		8.15pm	LT
Sun	2	Aug	8.15pm	LT

# Contents

Theatre events	4 - 35
Future events	36
Make the Move	37
Exhibitions	38
North Devon Museum	39
Take Part, educational events	40
Friends of the Theatres	42
Locations & seating plans	43
How to book	44
Access	45
Supporting your Theatre	46

<b>G</b>	Group discounts available
<b>fr</b>	Ticket offers for 'Friends'
<b>ed</b>	Education project
	Pre-show suppers available
<b>pr</b>	Free programme for 'Friends'
<b>6+</b>	Minimum age recommendation
	Community bus available
<b>QT</b>	Queen's Theatre
<b>GC</b>	Queen's Gallery Café
<b>LT</b>	Landmark Theatre
<b>LP</b>	Landmark Pavilion

## Voulez Vous

Tues 28	8.15pm	LT
Tues 4 Aug	8.15pm	LT
Tues 11 Aug	8.15pm	LT
Tues 18 Aug	8.15pm	LT
Tues 25 Aug	8.15pm	LT

## Johnny Cowling

Thurs 30	8.15pm	LT
Thurs 6 Aug	8.15pm	LT

## Jiving Lindy Hoppers

Fri 31	8.15pm	LT
--------	--------	----

## August

### When You're Smiling II

Mon 3	8.15pm	LP
Mon 10	8.15pm	LP
Mon 17	8.15pm	LP
Mon 24	8.15pm	LP

### The Tales of Peter Rabbit

Fri 7	1.30pm	4.00pm	LT
Fri 21	1.30pm	4.00pm	LT

### The Sound of Musicals II

Sun 9	8.15pm	LT
Sun 16	8.15pm	LT

### The Freddie Starr Show

Thurs 13	8.15pm	LT
----------	--------	----

### Joe Pasquale

Thurs 20	8.15pm	LT
----------	--------	----

### Syd Lawrence Orchestra

Fri 28	7.45pm	QT
--------	--------	----

### Sunwest Festival

Fri 28		LT
Sat 29		LT
Sun 30		LT
Mon 31		LT

## September

### The Bee Gees Story

Tues 1	8.15pm	LT
--------	--------	----

## Magic of the Dance

Thurs 3	7.45pm	QT	
Fri 4	7.45pm	QT	
Sat 5	2.45pm	7.45pm	QT

## Richard Digance

Wed 9	8.15pm	LT
-------	--------	----

## Lunchtime Classical Concert

Wed 9	1.05pm	QT
-------	--------	----

## Jethro

Sat 12	7.30pm	QT
--------	--------	----

## Andy Fairweather Low

Sun 13	8.00pm	LT
--------	--------	----

## Classical Season

### Emma Johnson & John Lenehan

Wed 16	7.30pm	QT
--------	--------	----

### Rock 'til We Drop

Thurs 17	7.45pm	QT
----------	--------	----

### Beyond the Barricade

Fri 18	7.45pm	QT
--------	--------	----

### Solid Gold Country Legends

Sat 19	8.15pm	LT
--------	--------	----

### Tony Kofi Quartet

Wed 23	8.00pm	GC
--------	--------	----

### Craig & Willoughby

Thurs 24	8.00pm	GC
----------	--------	----

### Sean O'Farrell

Fri 25	8.15pm	LT
--------	--------	----

### London Community Gospel Choir

Fri 25	7.30pm	QT
--------	--------	----

### Murder in Mind

Fri 25	7.00pm	LP
--------	--------	----

### Julian Clary

Sat 26	7.45pm	QT
--------	--------	----

### Last of the Summer Wine

Tues 29	7.45pm	QT	
Wed 30	7.45pm	QT	
Thurs 1	2.45pm	7.45pm	QT
Fri 2	7.45pm	QT	
Sat 3	2.45pm	7.45pm	QT

The Trust is financially supported by:



This paper used in this brochure is from 100% renewable resources and printed using only biodegradable vegetable and soya based inks.

Registered Charity number 1027553

# Make the Move at The Landmark

Performing Arts classes run every week during term time at the Landmark Theatre usually from 3pm to 9pm every Monday, Tuesday, Wednesday and Thursday, providing excellent access and development opportunities for young people. See P37 for the full timetable and information on our many other arts education special projects.

# The Gallery Sessions

## Young Musicians' Showcase

A celebration of music featuring just a few of the many talented local young people who receive help and encouragement from North Devon charity, *Young Musicians' Support*. The

varied programme will include soloists and ensembles, singers and instrumentalists, some of whom are well on the way to a professional career and others who are just starting out on their musical journey.



Presented by Young Musicians' Support, a registered charity dedicated to helping young classical musicians in North Devon.

£20 £55 12+

Wed 22 July, 8pm  
all tickets: £5



## Tony Kofi Quartet

with Jonathan Gee (piano), Ben Hazleton (bass), Winston Clifford (drums)

Multi-award winning saxophonist Tony Kofi's recent CD *All is Know* is a re-appraisal of Thelonious Monk, which has been performed at various festivals

including a six-hour marathon of Monk's complete works at the 2003 and 2007 London Jazz Festivals.

Tony is touring Europe again in 2009 with Jamaaladeen Tacuma and will be at the Berlin Festival with the World Saxophone Quartet, in which he has the honour of being the youngest and only UK member. He continues to be nominated for various awards, including *Best Jazz Act* at the MOBOS.

Tonight's welcome return will mix his Monk repertoire with originals.

£20 £55 12+

Wed 23 September, 8pm  
tickets: £9.50

## Craig & Willoughby

Craig & Willoughby are singer-songwriter Cathryn Craig and accomplished guitarist and ex-Strawb Brian Willoughby. The combination of Brian's strong British and Cathryn's American roots creates an Anglicised Americana that blurs musical boundaries. Their intricately crafted songs tell true stories and reflect life experiences.

They have both toured with Nanci Griffith who also appeared on the duo's song for peace *Rumours of Rain*.

*'an intimate and compelling slice of real country blues'* Mojo magazine.

*'very much the real deal'* Froots.



£20 £55 12+

Thurs 24 September, 8pm  
all tickets: £8



# Lennon – The Legend

## His music lives on

John Lennon one of the most important icons in musical history, gained worldwide fame as a member and founder of The Beatles, where his influence and impact was enormous. In his solo career, he wrote and recorded such classics as *Give Peace A Chance* and *Imagine*, becoming a performer of immense stature.

Two hours of music and mantra will remind you of the sheer power of Lennon's songs; with a live band and full multimedia experience, come and be transported back through time.

**G 12+**

**Landmark Theatre, Ilfracombe**

Fri 3 July, 8.15pm

all seats: £15



## Eating in

Let us tempt your taste buds with our excellent range of food and drink from our two café bars.

### The Gallery Café

At the Queen's Theatre, Monday to Saturday, 10am to 3pm.

The Gallery serves fine pastries, crisp salads and a selection of paninis and sandwiches. Fully licensed, the café uses Fairtrade coffee and tea, is family friendly and fully accessible. A classic yet

contemporary respite from the bustle of Barnstaple.

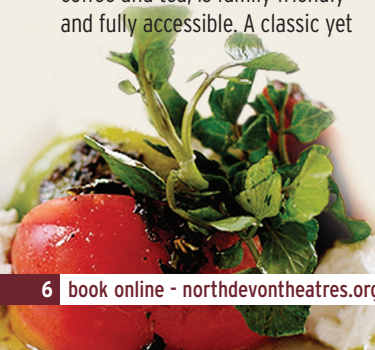
### The Rendezvous Café

At the Landmark Theatre, open seven days a week.

With its large ocean-facing terrace and breathtaking views, the Rendezvous makes a perfect setting to enjoy great food and the best outlook in Ilfracombe. Open for morning coffee, light lunches and afternoon tea.

### Pre-show suppers at the Queen's Theatre

Make a night of it and enjoy a pre-show supper. Ask for details of availability and menu details when booking your tickets.



**'A SASSY, SIZZLING,  
SENSATION OF A SHOW!'**

NEIL SEAN · SKY NEWS



# CABARET

STARRING

**WAYNE SLEEP**

AS EMCEE

**SAMANTHA BARKS**

RUNNER-UP FROM BBC TV'S  
'I'D DO ANYTHING' AS SALLY BOWLES



**'STUNNING'**

SUNDAY EXPRESS



**'GENIUS'**

THE INDEPENDENT



**'SUPERB'**

FINANCIAL TIMES



This unforgettable musical is theatre at its best.

Come to the cabaret, it's divine decadence darling!

**G** **PT** **13+**

**Queen's Theatre, Barnstaple**

Mon 15 to Sat 20 June

Mon to Sat eves 7.30pm

Wed, Thurs & Sat mats 2.30pm

Mon to Thurs eves & Sat mat:

stalls/dress circle: £28 (£26),

upper circle: £26 (£24)

Fri & Sat eves:

stalls/dress circle: £32 (£30),

upper circle: £30 (£28)

Weds & Thurs mats, all seats: £22

From the creators of hit musical Chicago, Cabaret turns 30's Berlin into a sassy and sizzling haven of decadence. Featuring show-stopping choreography, dazzling costumes and some of the most iconic songs in musical theatre including *Mein Herr*, *Maybe This Time*, *Money Money Money* and of course *Cabaret*.

This production contains adult themes and brief moments of nudity.  
Recommended age 13+ (subject to parental/teacher's discretion).

Box Office 01271 32 42 42 **7**



ENGLISH NATIONAL BALLET

# Angelina Ballerina's Big Audition

Performed by English National Ballet

Choreography: Antony Dawson

Music: Pyotr Ilyich Tchaikovsky

The little star with big dreams takes her next steps.

Following Angelina Ballerina's first real live ballet, Angelina and friends return to the stage. This magical new ballet by English National Ballet follows Angelina as she prepares to audition for the prestigious Camembert Academy.

Miss Lilly prepares Angelina for her big chance to dance in front of the judges and, although excited about the possibility of an exciting new adventure, Angelina worries about leaving home and Alice behind.

During her audition at the Camembert Academy, Angelina meets lots of new friends who introduce her to exciting new twists on traditional ballet, from

jazz to hip hop. Will Angelina's dream of joining the academy end in tears, or will this be an exciting new chapter in her life?

[www.ballet.org.uk/angelina](http://www.ballet.org.uk/angelina)

Running time 1 hour and 15 minutes including a 20 min interval.

Angelina Ballerina © 2009 HC & KH.  
© 2009 HIT Entertainment Ltd



G 6+

**Queen's Theatre, Barnstaple**

Fri 3 & Sat 4 July

Fri: 6pm, Sat: 11am, 2pm & 5pm

all seats: £15

young person: £9.50

family ticket: £45







# THE WIZARD OF OZ

By L. Frank Baum

With music & lyrics of the MGM motion picture score by Harold Arlen & E.Y. Harburg

Background music by Herbert Stothart

Book adaptation by John Kane from the motion picture screenplay

L. Frank Baum's time-honoured classic 'The Wizard of Oz' comes to North Devon. This musical masterpiece will feature spectacular staging and beautiful costumes complementing the classic musical numbers from the famous 1939 film we all know and love.



Starring Joss Wyre...  
The public's winner of 'Find Dorothy'

By arrangement with Musicscope and Stage Musicals of New York

[www.brauntonproductions.co.uk](http://www.brauntonproductions.co.uk)



G 6+

## Queen's Theatre, Barnstaple

Tues 7 to Sat 11 July

eves 7.30pm, Sat mat 2pm

all seats: £12

young person, upper circle &

restricted view: £8

family ticket: £36

## Crash - Sea to Shore

Artists from the Generating Company, with some of North Devon's most talented young people, embark on this year's Fysical project. This stunning piece of theatre combines contemporary circus and live soundscapes to create an instrumental, physical and visual experience.

Preview performance for primary schools 2pm.

Free admission with a maximum ticket allocation of 100 seats per school.

Tickets must be booked in advance via the Theatres' Box Office.

G ed 6+

### Landmark Theatre, Ilfracombe

Fri 10 July, 8.15pm

all seats: £9.50

young person: £6.50

family ticket: £26



## Summer Sunday Theatre

# Funny Money

Barnstaple Dramatic Society return with a fast moving hilarious comedy suitable for all the family.

Henry Perkins is on the underground, returning home, when by mistake, he picks up the wrong briefcase which happens to contain £735,000 in used notes. Foreseeable and unforeseeable events intervene in the true spirit of British farce.

An amateur production written by Ray Cooney.

**G**  **12+**

**Landmark Theatre, Ilfracombe**

Sun 12 & 19 July, 8.15pm  
all seats: £8.50  
family ticket: £28



# Hobson's Choice

By Harold Brighouse

Set in 1880s Salford, Henry Horatio Hobson is a successful shop owner selling shoes made by his employee, Will Mossop. Hobson rules his household with a rod of iron, but when his children and shoemaker rebel, what choice is he presented with? Discover the hilarity of his dilemma as Studio Theatre brings this delightful Lancashire comedy to life.



**G** **8+**

**Landmark Theatre, Ilfracombe**

Sun 26 July & 2 August, 8.15pm  
all seats: £8.50  
family ticket: £28

[studiotheatreonline.org.uk](http://studiotheatreonline.org.uk)

# The Sound of Musicals

The Music and Lyrics of Rodgers & Hammerstein. Devised and directed by Lee Baxendale

Join members of Studio Theatre for an enchanted evening as they perform an array of showstoppers from theatre's most successful musical duo, including: *Carousel*, *Oklahoma*, *South Pacific*, *The King & I* and *The Sound of Music*.

[www.studiotheatreonline.org.uk](http://www.studiotheatreonline.org.uk)

**G** **12+**

**Landmark Theatre, Ilfracombe**

Sun 9 & 16 August, 8.15pm  
all seats: £8.50  
family ticket: £28



# Summer in the Pavilion Theatre

## Café Cabaret

Presented by Double Take Illusions

Jane and Dave Williams are joined by international guest artistes Lesley and West in this professional show.

Come and join in the fun and frolics of many outrageously funny, larger than life characters that, by chance or intention, cross the threshold of the Café Cabaret. On the menu you will find physical theatre, song, dance, illusions and comedy sketches.

**G 10+**

### Landmark Pavilion, Ilfracombe

Thurs 23 July, Sat 8, 15 & 22 August

Thurs 3 September, 8.15pm

all seats: £10 (inc nibbles)



## When You're Smiling II

A family trip down memory lane...

A second nostalgic look at the war years with different songs, stars and sketches that kept them 'smiling through' the 1940s, performed by Studio Theatre.



[www.studiotheatreonline.org.uk](http://www.studiotheatreonline.org.uk)

**G 6+**

### Landmark Pavilion, Ilfracombe

Mon 3, 10, 17 & 24 August, 8.15pm

all seats: £7

Braunton Productions  
and Shakeley Productions  
present

# MAGIC AT THE MOVIES

Classic movie  
themes that all the  
family will love,  
including:

Hairspray, The  
Rocky Horror Show,  
Dreamgirls, James  
Bond, Mamma Mia,  
Dirty Dancing,  
Footloose and  
many more!

Join us for an  
exciting evening  
of musical  
entertainment  
and great dance  
numbers.

**G 10+**

Landmark Pavilion, Ilfracombe  
Fri 24 & 31 July, 7, 14 & 21 August,  
4 Sept, 8.15pm  
all seats: £8 (£5)  
family ticket: £20

# Roll Out the Barrel

Let's have a sing along...

Roll back the years and bring back the memories with this gloriously happy show that has been lighting

up theatres all over the country. This professional show features a feast of non-stop golden oldies, from music-hall classics to show songs, sing-a-long melodies to vintage Flanagan & Allen.

*White Cliffs of Dover, We'll Meet Again, Underneath the Arches, Bye Bye Blackbird, Pennies from Heaven...*

**G**  **10+**

**Landmark Theatre, Ilfracombe**

Wed 15 July, 8.15pm

all seats: £10



## Comedy Club at the Seafront

This well-established comedy club has seen some fantastic acts over the past few months. Formed in association with Barnstaple's Comedy Club at The Riverfront Café, each night provides two great acts from the comedy circuit of Jongleurs & Jesters clubs.

Following the comedy Wendy May will DJ 'til midnight.

To see the line-up visit the theatres' website at [www.northdevontheatres.org.uk](http://www.northdevontheatres.org.uk).

Artists subject to change.

**G** **16+**  140

**Landmark Pavilion, Ilfracombe**

Thurs 16 July & Fri 18 September

8.30pm to midnight

all tickets: £7



# That'll Be The Day

A brand-new summer '09 show

This incredibly popular rock 'n' roll production returns with a brand-new summer show.

Prepare to party as Trevor, Gary, Rebel and the gang perform their



legendary rock 'n' roll spectacular, featuring over 100 classic-gold hits of the 1950s, 60s, 70s and 80s, combined with new wacky comedy routines to produce a show with a real feel-good party atmosphere.

*'Non-stop Nostalgia'* Daily Echo

[www.thatllbetheday.com](http://www.thatllbetheday.com)

**G**  **16+**

**Landmark Theatre, Ilfracombe**

Thurs 16 July, 8.15pm

all seats: £18.50 (£17)

## Dance 2009

Presented by Sarah Anne Westcott Dance & Performing Arts Studio

We are back once again with a lively and entertaining show which promises to have something for everybody.

Come along and enjoy a great performance with some of North Devon's most talented and enthusiastic young performers.

**G** **5+**

**Queen's Theatre, Barnstaple**

Sat 18 July, 2pm & 7pm

all seats: £8.50 (£7.50)



# Grimethorpe Colliery Band



The real stars of the hit movie *Brassed Off* are in constant demand throughout the world for concert appearances. Having won almost every brass band accolade, these musicians have an esteemed international reputation with numerous television appearances and recordings to their credit. Enjoy the fabulous sound of this world famous brass band as they perform your favourite classics with passion and style.

*'Sensational - performing favourite classics in spectacular style!'* The Times

*'A thoroughly entertaining show and a must for all music enthusiasts!'* The Guardian

**G**  **10+**

**Queen's Theatre, Barnstaple**

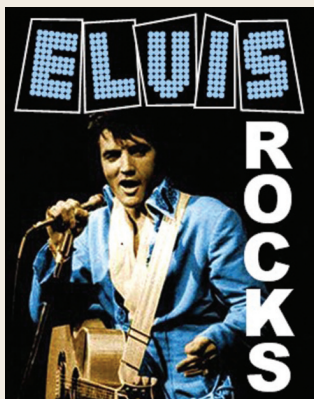
Sun 19 July, 3pm

stalls/dress circle: £17.50

upper circle: £16.50

## Elvis Rocks

This concise musical theatre production encompasses Elvis' entire musical journey from Memphis to Las Vegas.



With an amazing line-up of musicians and performers, the leading roles in the show are played by two experienced singers, Steve Halliday, who played the role of Eddie Cochran in *Rockin' on Heaven's Door* and Michael King who also formerly performed in *The Power of Elvis*.

**G**  **8+**

**Landmark Theatre, Ilfracombe**

Tues 21 July, 8.15pm

all seats: £16.50

young person: £8.50

family ticket: £46

# One Night in Vegas

The UK's leading Vegas show for all the family

This concert-style show features the music and dance from the entertainment capital of the world, Las Vegas.

Featuring performers from the West End, this dazzling production features powerful musical numbers, live big band swing, beautiful dancing girls, spectacular costumes, and large video imagery.

Starring the outstanding singer/songwriter Martyn Lucas, performing on his grand piano, and accompanied by musicians from the world-acclaimed British Philharmonic Orchestra, there will be songs from *Phantom of the Opera*, *Copacabana* and *Dreamgirls* and classics from Frank Sinatra, Bobby Darin, Elton John, Elvis and Barry Manilow.

*'Voice was excellent...'*

London Palladium

**G**  **8+**

**Landmark Theatre, Ilfracombe**

Weds 22 & 29 July, 5,12,19 & 26 August,

2 September, 8.15pm

all seats: £16.50 (£15)

young person: £8 (or free with every adult ticket purchased)



# Phil Cool

Phil Cool is undoubtedly one of the UK's finest impressionists. Seeing is believing. While many rely on make up and costumes, all he needs is his face which he can manipulate with such accuracy it really could be Tony Blair. Paul McCartney, Winston Churchill or George Bush on the stage.

[www.philcool.co.uk](http://www.philcool.co.uk)

**G 14+**

**Landmark Theatre, Ilfracombe**

Thurs 23 July, 8.15pm

all seats: £15 (£14)



## Young Stars of the Future

**A night of song and dance**

Nigel Brooks presents the Young Stars of the Future featuring **Panache, Jaden Cornellius, Johnny Black, Sam & Ruth Chapple**, plus guest stars from London's West End and supporting acts.

All proceeds go to Wellend House for children with special needs.

**G 5+**

**Queen's Theatre, Barnstaple**

Sat 25 July, 7pm

All seats: £10





# Johnny Cowling

Comedian, singer & entertainer

Hailing from Cornwall, Johnny Cowling has been compared to the comedy genius of Jethro with a good measure of Tommy Cooper to boot.

With his unique blend of humour and music, plus a rare affinity to bond with his audience, Johnny can belt out a song almost as good as Elvis (his words).

Hugely popular in the South West of the UK, Johnny recently ventured further afield as the support act for Paddy McGuinness. The tour, which included a date in Barnstaple, was a huge success and left the audience in absolute hysterics.

*'One of our great undiscovered comedy talents...he gave us an hour of pure genius. He was brilliant - a true entertainer who could make anybody laugh.'*

Fern Britton

**G** 18+

**Landmark Theatre, Ilfracombe**

Thurs 30 July & 6 August, 8.15pm

all seats: £14 (£13)

# Voulez Vous

## Abba hits galore

Performing a non-stop barrage of Abba hits, Voulez Vous' production is visually enhanced by multi-screen projection and a voice-over narration telling the story of Abba's rise to stardom to their eventual split.

Following the enormous success of *Mamma Mia the Movie*, come along and relive the music with the family and be entertained by the

finest and most recognised music ever; this is pure Abba nostalgia at its best.



**Landmark Theatre, Ilfracombe**

Tues 28 July, 4, 11, 18 & 25 August,  
8.15pm

all seats: £16.50 (£15.50)

young person: £8.50

family ticket: £46



# Jiving Lindy Hoppers

Take a trip through the history of dance with the Jiving Lindy Hoppers and young dancers from North Devon.

Combining various forms of media with dance demonstrations, this highly energetic group will perform jive and social dances through the ages, from 20s Charleston to the 40s Chattanooga.



**Landmark Theatre, Ilfracombe**

Fri 31 July, 8.15pm

all seats: £10 (£8), young person: (£5)

family ticket: £25



# The Tales of Peter Rabbit

With brand-new songs, beautifully designed scenery and costumes, this show will delight fans of Peter Rabbit, both young and old, by remaining faithful to the original stories.

Join Peter Rabbit and Benjamin Bunny on their adventure through the forest to Mr McGregor's garden, to fetch a nice juicy lettuce. On the way they'll be meeting some friendly and familiar faces including Mrs Tiggy-Winkle, Jemima Puddle-Duck and Tom Kitten.



The story will be narrated by its very own Beatrix Potter.



**G 3+**

**Landmark Theatre, Ilfracombe**  
Fri 7 & 21 August, 1.30pm & 4.00pm  
all seats: £9, family ticket: £32





# The Freddie Starr Show

Plus support

Britain's favourite funny man returns for the summer bringing with him his unique brand of zany humour. A reassuringly outrageous figure, this legendary entertainer, singer and impressionist guarantees to supply you with plenty of music, mayhem and trouser droppin' craziness.

Adult humour throughout.

**G 18+**

**Landmark Theatre, Ilfracombe**

Thurs 13 August, 8.15pm  
all seats: £17 (£16)



# Syd Lawrence Orchestra

Band leader Chris Dean packs a real punch with his dazzling new show, *The Best of the Big Bands*.

Featuring the music of Glenn Miller, Count Basie, Tommy Dorsey, Artie Shaw, Benny Goodman, Billy May, Frank Sinatra and Ella Fitzgerald, these classic arrangements are played with a real passion for the music.

An evening filled with the most distinctive music ever to grace the turntable, seamlessly combined with audience banter, producing a unique fusion of music and humour.

**G**  **10+**

**Queen's Theatre, Barnstaple**

Fri 28 August, 7.45pm  
stalls/dress circle: £15.50 (£13.50)  
upper circle: £13.50 (£11.50)

# Joe Pasquale

Yes Ladies and Gentleman, once again Joe Pasquale is back on the road, but this time he's bigger and better than ever before.

Question: Why should you go and see Joe Pasquale?

Answer: Don't go to see him because you think he's funny; don't go to see him because he set up a helpline for battered cod; see him because he has a lot of overheads and his tortoise needs money to open a Velociraptor farm.

Comedy doesn't come any squeakier than this.

Suitable for all ages & species.

**G**  12+

**Landmark Theatre,  
Ilfracombe**

Thurs 20 August, 8.15pm  
all seats: £17.50



# Sunwest Festival

Free entertainment - real ales - local ciders



The Landmark Beer Festival's younger sister enjoys as much popularity and perhaps even more sunshine as it spans the August Bank Holiday weekend.

With high quality performances from some of the region's top artists including:

Junkstar, Jay Tamkin Band, Jenna, Hip Route, The Liquidators, Spinlords of Spintania

Sunday - Bands Day in association with SoundPad



Don't miss the annual Mini Rally finish at the Landmark Theatre grounds on Monday 31 August.



**Landmark Theatre, Ilfracombe**  
Fri 28 to Mon 31 August  
admission: free

## Magic of the Dance

They tap on tables, jump over boxes and stomp the ground until their shoes really do catch fire.

Magic of the Dance is a fast-paced, energetic dance production which celebrates the history of Ireland

and includes a haunting narrative by Hollywood icon **Christopher Lee**.

Enchanting music, breath-taking pyrotechnics and technologically advanced lighting all combine with the world's greatest Irish dancers.



# The Bee Gees Story

With their stunningly convincing vocals, this show promises an evening of everything Bee Gees and features the uncannily convincing vocals of brothers Darren and Gary Simmons as Barry and Robin Gibb and Jarrod Loughlin as Maurice Gibb.

Perfectly recreating the Gibb brothers' extensive repertoire, special guest performers will also be featured singing many of the hits the Bee Gees wrote for other artistes such as Barbara Streisand, Celine Dion and Diana Ross.



**G 8+**

**Landmark Theatre, Ilfracombe**

Tues 1 September, 8.15pm

all seats: £16.50

(£15.50)

*'The lead proves that he really does have feet of fire as he does a sequence where real flames top his shoes while he dances. ... the audience loved it!'*

This show includes strobe lighting.

**G**  **10+**

**Queen's Theatre, Barnstaple**

Thurs 3 to Sat 5 September

eves 7.45pm

Sat mat 2.45pm

all seats: £18.50 (£16.50)

family ticket: £66



# Jeanine Thorpe

violin, plus pianist

## The lunchtime classical concert series

When Jeanine Thorpe played in a lunchtime concert in 2005, aged just 16, she had just been voted student of the year by the European String Teacher's Association. She returns having won several further prizes and having competed in the BBC *Classical Star* programme.

Programme:

**Beethoven:** Kreutzer Sonata

**Kreisler:** Praeludium and Allegro

**Mozart:** Sonata, K454

**G 8+**

**Queen's Theatre, Barnstaple**

Wed 9 September, 1.05pm

all seats: £4.50



# Richard Digance



From performing to an audience of just eight in the Falklands to a mere half a million at Knebworth with The Beach Boys, Richard has survived all the trends in comedy and music and still remains one of Britain's unique entertainers. Not only contented with his songs, rhymes and stories, he is equally proud of his BAFTA Nomination, a Gold Award from the British Academy of Songwriters, a SONY Radio Award and a nine letter word on TV's *Countdown*.

**G fr**  **14+**

**Landmark Theatre, Ilfracombe**

Wed 9 September, 8.15pm

all seats: £15 (£13)

Friends' ticket offer, all seats: £11



# 2009 Jethro

## The Cornish legend returns

Jethro may have never won a comedy award, but he did once win the father's egg and spoon race at the St Just Primary School sports day.



Even more importantly, he still constantly fills theatres up and down the country and we're delighted that he's coming back.

If only to hear the theatre roar with laughter, you should make time for this night; Jethro is a total one off.

\*Contains Adult Material

**G 18+**

**Queen's Theatre, Barnstaple**  
Sat 12 September, 7.30pm  
all seats: £18

## Andy Fairweather Low and The Low Riders

Andy's pedigree is the stuff rock dreams are made of. He was the lead singer in Amen Corner, whose 60s hits included *Bend Me Shape Me*, *Hello Suzy* and *If Paradise is Half As Nice*. His 70s solo career saw two massive hit singles; *Wide Eyed and Legless* and *Reggae Tune*.

Following this, Andy has worked with Eric Clapton, George Harrison, Bob Dylan, Jimi Hendrix, David Crosby, Elton John, Pete Townshend... and hundreds more.

His first solo album in 24 years, *Sweet Soulful Music*, was released late in 2007 followed by



*The Very Best Of Andy Fairweather Low*, which was released in the UK in June 2008.

**G 12+**

**Landmark Theatre, Ilfracombe**  
Sun 13 September, 8pm  
all seats: £16

# Rock 'til We Drop

## The Barron Knights and The Tremeloes

These two musical legends come together for an exclusive concert.

The Barron Knights have toured the world for the past forty-seven years and sold more comedy records than any other band with songs such as *Call Up The Groups*, *Pop Goes The Workers* and *A Taste Of Aggro*.

The Tremeloes are one of the sixties most iconic groups, with

hits including *Silence is Golden*, *Here Comes My Baby*, *Suddenly You Love Me* and *Even the Bad Times Are Good*.

Now, the boys get together in what will be a night of the best rock 'n' roll in years.

**G 12+**

**Queen's Theatre, Barnstaple**

Thurs 17 September, 7.45pm  
all seats: £16.50 (£15.50)



# Beyond the Barricade

## Tenth anniversary tour

Beyond the Barricade returns with a brand-new tenth anniversary production.

Recreating original West End and Broadway musical hit songs, the cast of past principal performers from *Les Miserables* sing many of the best musical songs from the past ten years and include:

*The Phantom of the Opera*,  
*Chess*, *The Lion King*, *Blood Brothers*, *Miss Saigon*

and many more productions, climaxing with a spectacular finale from, of course, *Les Miserables*.

[www.beyondthebarricade.com](http://www.beyondthebarricade.com)

G  8+

**Queen's Theatre, Barnstaple**

Fri 18 September, 7.45pm

all seats: £18.50 (£17)

# Solid Gold Country Legends

This ever-popular production showcases a medley of country music hits which have all achieved Gold Disc status for record sales.

Led by Randy Ryman and the Outlaw Country Band, this show is a perfect mix of old and new country hits from the classics of Hank Williams, Patsy

Cline, Willie Nelson, Tammy Wynette to Dolly Parton, Kenny Rogers and Shania Twain to name just a few.

G 12+

**Landmark Theatre, Ilfracombe**

Sat 19 September, 8.15pm

all seats: £15.50 (£14.50)



# Sean O'Farrell

Popular Irish singer songwriter Sean O'Farrell returns to our shores with a very special new show.

Sean has toured with many great music legends, including: Don Williams, Tammy Wynette, George Hamilton and Daniel O'Donnell (with whom he co-write some songs for the album *Until the Next Time*).

Backed by a five-piece band, this new show will be a mixture of many of Sean's older songs, such as the BBC Radio 2 hit *Eighteen Yellow Roses*, along with some of the newer tracks he's just recorded on his album *Life Is A Teacher*.



**G 12+**

**Landmark Theatre, Ilfracombe**  
Fri 25 September, 8.15pm  
all seats: £15.50

# Murder in Mind

*A murder-mystery evening presented by The Foul Players*

It is 1975 and the Maharishi Andayo Moniova is to make a rare appearance at Barking Manor, home of Lady Barking who has given all her worldly wealth to the cause, as have many others.

The faithful are assembled; all love beads and flower power, when a knock at the door announces the arrival of Laura Norder and her fiancé Perry Winkel who have

broken down on the lane outside. Or have they?

The Maharishi is late and is rumoured to be meditating but the followers are starting to get a little restless, after all, this is not the first time he has failed to appear...questions need to be answered.

There will be a small prize for the best dressed man and woman.

**G 12+**

**Landmark Pavilion, Ilfracombe**  
Fri 25 September, 7pm  
£22.50 (includes 3-course supper)



# The Classical Circle 2009-10

Book for all 6 concerts in the new series before 31 July 09, saving £12.50 from the total cost, to become a member of our exclusive Classical Circle. As a member you will receive a complimentary programme for each concert and in addition we

invite you to join us for a complimentary drink to start the season at the first concert.

The Classical Series is sponsored by



## Emma Johnson Clarinet John Lenehan Piano

International stars Johnson and Lenehan are highly regarded worldwide for their solo performances. Over the years they have appeared in most major concert halls across Europe, the USA and the Far East. As prolific recording artists they have been awarded recognition by both Gramophone and the BBC. In early 2009 they released a new disc on the Naxos label of sonatas by Bernstein and Copland, together with compositions by John Dankworth, including the delightful *Suite for Emma* which is included in this innovative programme for the Queen's.

**Schumann** - Romances Op. 94

**Brahms** - Sonata for Clarinet and Piano Op.120 No.1 in F minor

**Widor** - Introduction and Rondo

**Poulenc** - Clarinet Sonata

**Dankworth** - Suite for Emma



**Queen's Theatre, Barnstaple**

Wed 16 September, 7.30pm

stalls/dress circle: £17.50 (£16)

front stalls/upper circle: £16 (£14.50)



# Philharmonia Orchestra

**Conductor: Ian Brown**

**Soloist: Min-Jin Kym, Violin**

The Southbank Centre's world class, resident orchestra returns to Barnstaple with the exceptionally talented violinist Min-Jin Kym, sister of the exceptionally talented pianist Min-Jung who played with the Philharmonia last season.

Founded in 1945 the Philharmonia is one of the world's most recorded orchestras with over 1000 releases to its credit and acknowledged as the UK's foremost musical pioneer. With a touring schedule to include the great concert halls of the world we are fortunate to welcome back an orchestra of this calibre to North Devon.

**Rossini** - Overture: Italian Girl in Algiers

**Bruch** - Violin Concerto No.1 in G minor

**Beethoven** - Symphony No.3 in E flat Eroica



**JOHN FOWLER  
HOLIDAY PARKS**

This concert is also supported by John Fowler Holiday Parks



**Queen's Theatre, Barnstaple**

Tues 27 October, 7.30pm

stalls/dress circle: £24 (£22.50)

front stalls/upper circle: £23.50 (£21)

# Solstice String Quartet

**Jamie Campbell** Violin

**Nicholas Shardlow** Violin

**Meghan Cassidy** Viola

**Gregor Riddell** Cello

This quartet has rapidly gained a reputation for being one of the most talented in the country. Winners of the *Royal Over-Seas League* competition 2009.

**Haydn** - Quartet Op.76 No.5

**Dvorak** - Quartet in F Op.96  
America

**Beethoven** - Quartet Op.127



**Queen's Theatre, Barnstaple**

Fri 27 November, 7.30pm

stalls/dress circle: £17.50 (£16)

front stalls/upper circle: £16 (£14.50)

# Sinfonia Classica

**Freddy Kempf** Piano  
**Katja Laemmermann** Violin

As a highly regarded, explosive and sensitive pianist, Kempf has many dedicated admirers. He is joined by the rapidly rising star soloist Laemmermann.

**Grieg** - Holberg Suite  
**Mendelssohn** - Concerto for Violin and Piano  
**Dvorak** - Serenade for Strings



**G**  **6+**

**Queen's Theatre, Barnstaple**  
Thurs 25 February 2010, 7.30pm  
stalls/dress circle: £17.50 (£16)  
front stalls/upper circle: £16 (£14.50)

# Kungsbacka Piano Trio

**Malin Broman** Violin  
**Simon Crawford-Phillips** Piano  
**Jesper Svedberg** Cello

One of the most outstanding ensembles of their generation, this fresh and sophisticated trio can be frequently heard on BBC Radio 3

**Schumann** - Piano Trio  
**Beethoven** - Trio in B flat Op.97  
Archduke



**G**  **6+**

**Queen's Theatre, Barnstaple**  
Thurs 25 March 2010, 7.30pm  
stalls/dress circle: £17.50 (£16)  
front stalls/upper circle: £16 (£14.50)

# Sinfonia Classica

Director: Matthias Wollong  
University College Dublin  
Choral Scholars  
Conductor: Desmond Earley

This award-winning vocal ensemble joins the Queen's Theatre resident orchestra to close the 2009 - 2010 season.

**Mozart** - Oboe Concerto K.314  
**Mozart** - Ave Verum Corpus K.618  
**Haydn** - St Nicholas Mass



**G**  **6+**

**Queen's Theatre, Barnstaple**  
Thurs 29 April 2010, 7.30pm  
stalls/dress circle: £17.50 (£16)  
front stalls/upper circle: £16 (£14.50)

# Last of the Summer Wine

“The Moonbather”

by Roy Clarke

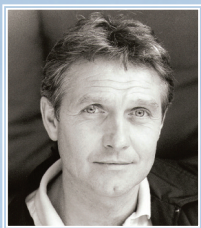
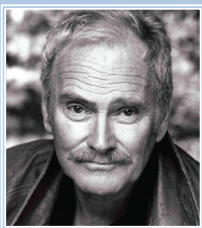
As Last of the Summer Wine leaps from the small screen to stage for the very first time, you can expect plenty of japes, misunderstandings and the mandatory wheel barrow catastrophe as the ageing delinquents get themselves in and out of trouble.

Return to the halcyon days of Foggy, Compo and Clegg, as they reunite for this brand new stage

adaptation of the television classic. Written by Roy Clarke, who has penned every episode of the world's longest running sitcom and is also the creator of *Open All Hours* and *Keeping Up Appearances*. This new stage play is packed full of the eccentric humour and full-on slapstick that has made Last of the Summer Wine a British institution.







Starring Ruth Madoc with Tony Adams and Steven Pinder.

**G fr**  **12+**

### **Queen's Theatre, Barnstaple**

Tues 28 September to Sat 3 October, eves 7.45pm, mats 2.45pm

stalls/dress circle: £19 (£17)

front stalls/upper circle: £16 (£15)

Tues, all seats: £15

Thurs & Sat mat, all seats: £11

Schools, Wed to Fri eves and Thurs mat, all seats: £6.50

Friends' ticket offer, Wed eve all seats: £11



# Julian Clary

## Lord of the Mince

*"I, Julian Clary, have done for mincing what Michael Flatley did for Irish dancing. Now, suddenly, I'm 50. Uncannily so is Michael Jackson. We have lived parallel lives in many ways: same age, same colour, neither of us strangers to the make up box. And I nearly called my show 'This is S\*\*\*\*'".*

*'He made Carmen Miranda look like Brando'* Scotsman

*'He knows what we want: excess coming by the bucket load'* Scotsman

*'Julian Clary camps it up like a gang of brownies on a sausage sizzle'*  
Sunday Mail

Presented by: Mick Perrin  
for Just For Laughs Live Ltd

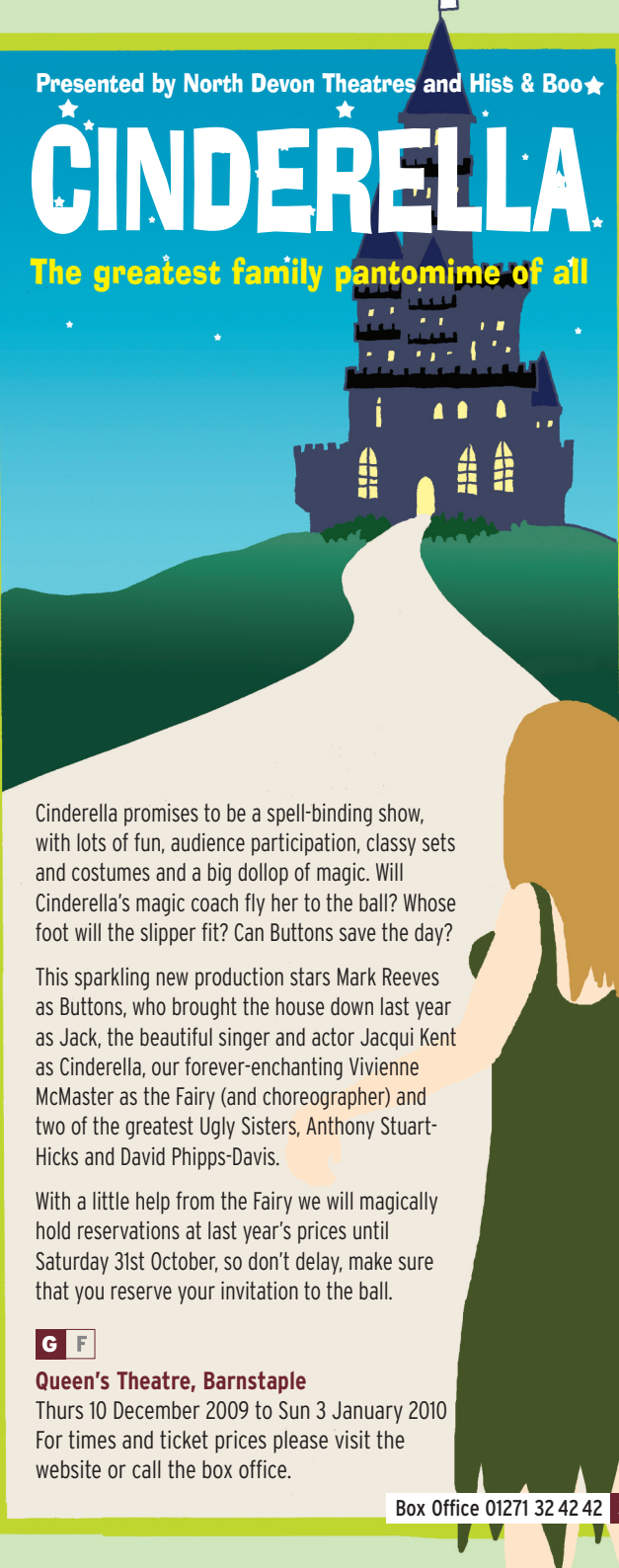
**G**  16+

**Queen's Theatre, Barnstaple**  
Sat 26 September, 7.45pm  
all seats: £20 (£17.50)

Presented by North Devon Theatres and Hiss & Boo★

# CINDERELLA

The greatest family pantomime of all



Cinderella promises to be a spell-binding show, with lots of fun, audience participation, classy sets and costumes and a big dollop of magic. Will Cinderella's magic coach fly her to the ball? Whose foot will the slipper fit? Can Buttons save the day?

This sparkling new production stars Mark Reeves as Buttons, who brought the house down last year as Jack, the beautiful singer and actor Jacqui Kent as Cinderella, our forever-enchancing Vivienne McMaster as the Fairy (and choreographer) and two of the greatest Ugly Sisters, Anthony Stuart-Hicks and David Phipps-Davis.

With a little help from the Fairy we will magically hold reservations at last year's prices until Saturday 31st October, so don't delay, make sure that you reserve your invitation to the ball.

**G F**

**Queen's Theatre, Barnstaple**

Thurs 10 December 2009 to Sun 3 January 2010

For times and ticket prices please visit the website or call the box office.

# Future Events

John Williams and John Etheridge

Landmark Theatre  
Thurs 1 October, 8pm

Simon Amstell - Do Nothing

Queen's Theatre  
Wed 7 October, 7.45pm

Wishbone Ash & The Hamsters

Queen's Theatre  
Thurs 8 October, 7.45pm

Nutcracker

Queen's Theatre  
Fri 9 & Sat 10 October  
2.30pm & 7.45pm

Marcus Brigstocke

Landmark Theatre  
Sat 10 October, 8pm

Joe Pasquale's Autumn 09 Tour

Queen's Theatre  
Thurs 15 October, 7.45pm

Magic - A Kind of Queen

Landmark Theatre  
Sat 17 October, 8pm

Curtis Stigers

Queen's Theatre  
Sun 18 October, 7.30pm

Dave Spikey

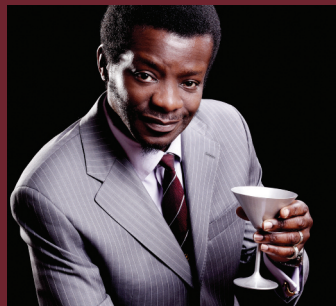
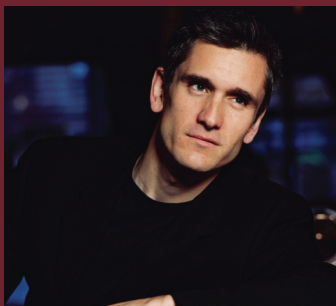
Queen's Theatre  
Thurs 29 October, 7.30pm

Grumpy Old Women - Live 2

Queen's Theatre  
Wed 25 November, 7.45pm

Stephen K Amos

Queen's Theatre  
Wed 3 & Thurs 4 February 2010,  
7.45pm



# Make the Move

## At The Landmark

Weekly performing arts classes providing access and opportunity in all aspects of theatre, from stage management, set design and script writing to dance, choreography and circus skills.

Registration now open for classes in drama, musical theatre, modern, jazz, tap and ballet.

New term starts Mon 7 September.

Term fee: £30 (per class)

Full fee: £120 (4 classes or more)

Per class: £3 (major class: £4)

Contact: Carol Turner 012711 869 216

### Timetable

#### Mondays

4.00 - 4.45	Junior jazz waiting list applies
4.00 - 4.45	Grade 1 ISTD modern
4.45 - 5.45	Junior musical theatre waiting list applies
4.45 - 5.45	Senior musical theatre waiting list applies
5.45 - 6.45	Senior jazz waiting list applies
5.45 - 6.45	Grade 2 ISTD modern
6.45 - 7.45	Grade 3 ISTD modern
6.45 - 7.45	Boys classical dance ages 12+
7.45 - 9.00	Contemporary & choreography waiting list applies
7.45 - 8.45	Grade 4 ISTD modern

#### Tuesdays

4.00 - 5.30	Acrobatics and balance waiting list applies
4.30 - 5.30	Grade 6 RAD ballet
5.30 - 6.30	Grade 3 ISTD tap
5.30 - 6.30	Grade 3 RAD ballet
6.30 - 7.30	Intermediate ISTD tap
6.30 - 7.30	Grade 4 ballet
7.30 - 8.30	Intermediate ISTD modern waiting list applies
7.30 - 8.15	Adult beginners/improvers tap
8.00 - 8.45	Adult intermediate tap

#### Wednesdays

3.15 - 4.00	Tiny turns ages 3 and above
4.00 - 4.45	Pre-primary RAD ballet ages 4½+ starters
4.00 - 4.45	Grade 1 ISTD tap
4.45 - 5.30	Primary RAD ballet
4.45 - 5.30	Performance rehearsal class
5.30 - 6.15	Grade 2 RAD ballet
5.30 - 6.15	Primary tap
6.15 - 7.00	Grade 1 RAD ballet
6.15 - 7.00	Grade 2 ISTD tap
7.00 - 8.00	Grade 4 ISTD tap
8.00 - 9.00	Grade 6 RAD ballet
7.00 - 9.00	Drama club waiting list applies

#### Thursdays

4.00 - 5.00	Mini major ballet invitation only
5.00 - 6.00	Grade 5 RAD ballet
6.00 - 7.30	Major/adv foundation ballet by invitation only



# Exhibitions



## **Bruce Aiken**

Queen's Theatre  
29 June to 25 July

### **Places I Remember**

The place is always significant; my illustrations are an attempt to encapsulate the pervading memory of that time and place.



## **Areas of Outstanding Natural Beauty**

Landmark Theatre  
29 June to 25 July

### **Photographic competition**

The 2008 AONB Photographic Competition, Imagery with Meaning, strongly encourages thoughtful photography and this exhibition of the competition's winners and finalists ensures to display shrewd examples of its four categories.



## **This is North Devon**

Queen's Theatre  
27 July to 29 August

A collection of iconic photographs of North Devon Life through the eyes of some of North Devon's leading photographers at Mike Southon Studios. The events and people that make North Devon unique can be seen in the colourful and eye catching exhibition.



## **Airscape Devon by Lance Read**

Landmark Theatre  
24 August to 3 October

From the air the beauty and amazing variation in North Devon's landscape can be truly appreciated. See it all captured in Lance's exhibition of digital photography from a bird's-eye view!



## **Subtle by Robert Hill**

Queen's Theatre  
1 September to 3 October  
North Devon landscape paintings

A great way to get to know North Devon's landscape, history, people and stories.



**Where Land and Sea Meet:  
The South West Coast, Past,  
Present and Future.**

4 July to 5 September

This family-friendly exhibition covers stories of the South West coast and includes fishing, holidays and the environment.

In collaboration with the South West Social History Curators Group.

**Heritage Open Days**

10 to 13 September

Special building openings, talks and guided walks in and around Barnstaple's historic buildings. Coordinated nationally by the Civic Trust in partnership with English Heritage. Watch the local press for more details.



**Urchfont Embroiderers:  
Stitched Textiles**

12 September to 7 November

Vibrant and imaginative textile art from this nationally renowned group of embroiderers.



**Free admission**

Opening times

Mon to Sat, 9.30am to 5pm

The Square, Barnstaple,  
North Devon EX32 8LN

Tel: 01271 34 67 47

[museum@northdevon.gov.uk](mailto:museum@northdevon.gov.uk)

[devonmuseums.net/barnstaple](http://devonmuseums.net/barnstaple)



# Take Part



## Jiving Lindy Hoppers Residency

Back by popular demand  
Russell and Carolene swing  
back to Devon.

Tues 28 - Fri 31 July

### Adults workshop

Tues 28 July, 7pm - 9pm

£5

No experience necessary -  
sense of humour....vital!

### Juniors

8 - 12 years, Seniors 13 years  
participant fee: £40  
Associates: £20

Daily 10am - 1pm  
(Juniors & Seniors)

Associates only: 2pm - 5pm

Fri 31 July, 2pm - end of show

## Musical Theatre Residency with Nigel Brooks & Gerry Zucharello

Celebrating great show tunes from  
*Cabaret*, *Smokey Joe's Café* and more.

Mon 17 - Sat 22 August

### Juniors ages 8 - 12

Mon - Thurs 10am - 3pm

Fri 10am - 5pm

### Seniors 13 and above

Mon - Thurs 10am - 5pm

Fri 2pm - 9pm

Sat 2pm - 5pm

call at 6pm, performance at 7pm

Demonstration of works in progress  
Sat 29 August, 7pm

tickets: £2 in advance, £3 on door  
participant fee: £75, Associates: £25

If additional juvenile company members  
are required for this year's panto  
(Cinderella), they will be selected from  
the Musical Theatre Residency, see above  
for more details.



The 29th May 1961 Charitable Trust and The Elmgrant Trust are generous supporters of our education programme.



## Acrobalance and Dance

Mon 3 - Thurs 6 August

10am - 4pm

Ages 8 and above

participant fee: £25

Associates: free

## Drama Residency

Fun week devising a piece of theatre with Mark Reeves (*Jack and the Beanstalk*) for demonstration at the end of the week.

Mon 10 - Fri 14 August

10am - 4pm daily

props and costumes provided

Ages 8 and above

participant fee: £25

Associates: £15

## Carnival Week

Mon 24 - Wed 20 August

10am - 4pm

Thurs 27 August 2pm - end of Carnival procession.

Working with professional practitioners from the world of music, props, parade, and procession we will be creating an explosion of sound and colour for Ilfracombe Carnival.

Ages 8 and above  
participant fee: £25

Associates: £15

Including costume hire and props, you will be asked to provide footwear as advised.



For further information contact Carol Turner on: 01271 869 216  
or email [carol.turner@northdevontheatres.org.uk](mailto:carol.turner@northdevontheatres.org.uk)

# Theatre Information

## Queen's Theatre

Boutport St, Barnstaple EX31 1SY  
Box Office tel: 01271 32 42 42

The Queen's Theatre is located in Boutport Street, on the corner of Butchers' Row, with parking close by at Queen Street and Bear Street car parks. If travelling from outside the area follow the signs for the Town Centre.

## Landmark Theatre

Wilder Rd, Ilfracombe EX34 9BZ  
Box Office tel: 01271 324242

The Landmark Theatre is located in Wilder Road on the Seafront, with public parking available, both on site and close by. Follow the signs for the Seafront and The Landmark is on your left.

## Public Transport

[www.carsharedevon.com](http://www.carsharedevon.com)  
[www.nationalrail.co.uk](http://www.nationalrail.co.uk)  
[www.traveline.org.uk](http://www.traveline.org.uk)  
[www.stagecoachbus.com](http://www.stagecoachbus.com)

**For all ticket bookings please telephone the Box Office: 01271 32 42 42**

*For non-ticket enquiries contact:*

Queen's Theatre  
Tel: 01271 327357  
Fax: 01271 326412

Landmark Theatre:  
Tel: 01271 865655  
Fax: 01271 867707

# Friends of the Theatres

There are many ways to support the Queen's Theatre, Barnstaple and the Landmark Theatre, Ilfracombe. By joining as a member for £18.50 for the whole year, you will be contributing to the continuing development of the Theatres' future. Not only will your contribution help enhance programming for future generations to enjoy you will also receive some unique benefits along the way:

- Seven days advance information and priority booking ahead of the general public for theatre events at the Queen's Theatre and The Landmark Theatre, (due to contractual differences this cannot be guaranteed on all shows).

- Best available seats guaranteed during priority booking.
- A regular newsletter providing details of future plans and current activities.
- A chance to meet the stars.

If you pay income tax or capital gains tax you may like to consider completing the Gift Aid Declaration on your application/renewal form.

Call Friends' Organiser Deborah Cooke on 01271 86 92 12 or email [debbie.cooke@northdevontheatres.org.uk](mailto:debbie.cooke@northdevontheatres.org.uk) for an application form or pick one up at the Box Office.



## QUEEN'S THEATRE STAGE

### FRONT STALLS

		A																									
		B				5 6 7 8 9 10 11 12 13 14 15 16 17 18										B											
		C		3 4 5 6 7 8 9 10 11 12 13 14 15 16 17 18 19 20 21																C							
		D		2 3 4 5 6 7 8 9 10 11 12 13 14 15 16 17 18 19 20 21 22																D							
		E																									
		F																									
		G																									
		1										STALLS				15 16 17 18 19 20 21 22 23 24											
1		H																							1		
2		J																							2		
3		K																							3		
4		L																							4		
5		M																							5		
6		N																							6		
7		P																							7		
8		Q																							8		
9		R																							9		
10		S																							10		
11		S																							11		
12		S																							12		

### DRESS CIRCLE

1 2 3 4 5 6 7 8 9 10 11 12											A											13 14 15 16 17 18 19 20 21 22 23 24										
1 2 3 4 5 6 7 8 9 10 11 12											B											13 14 15 16 17 18 19 20 21 22 23 24										
1 2 3 4 5 6 7 8 9 10 11 12											C											13 14 15 16 17 18 19 20 21 22 23 24										
1 2 3 4 5 6 7 8 9 10 11 12											D											13 14 15 16 17 18 19 20 21 22 23 24										
1 2 3 4 5 6 7 8 9 10 11 12											E											13 14 15 16 17 18 19 20 21 22 23 24										

### UPPER CIRCLE

1 2 3 4 5 6						F												F						19 20 21 22						
1 2 3 4 5 6						G												G						19 20 21 22						
1 2 3 4 5 6						H												H						19 20 21 22						
1 2 3 4 5 6						J												J						19 20 21 22 23 24 25						
1 2 3 4 5 6						K												K						19 20 21 22 23 24 25						
1 2 3 4 5 6						L												L						19 20 21 22 23 24 25						
M																														

## LANDMARK THEATRE STAGE

### FRONT STALLS

		A																											
		B				27 26 25 24 23 22 21 20 19 18 17 16 15 14 13 12 11 10 9 8 7 6 5 4 3 2 1																B							
		C		28 27 26 25 24 23 22 21 20 19 18 17 16 15 14 13 12 11 10 9 8 7 6 5 4 3 2 1																						C			
		D		31 30 29 28 27 26 25 24 23 22 21 20 19 18 17 16 15 14 13 12 11 10 9 8 7 6 5 4 3 2 1																				D					
		E																											
		F																											
		G																											
		48 47 46 45 44 43 42 41										A				40 39 38 37 36 35 34 33 32 31 30 29 28 27 26 25 24 23 22 21 20 19 18 17 16 15 14 13 12 11 10 9 8 7 6 5 4 3 2 1													
1		H																							1				
2		J																							2				
3		K																							3				
4		L																							4				
5		A																							5				
6		B																							6				
7		C																							7				
8		D																							8				
9		E																							9				
10		F																							10				
11		G																							11				
12		G																							12				

### CIRCLE

# How to Book & Access

## Online

Visit our website for secure online booking, 24 hours a day. A £2.60 transaction fee will be applied per booking.

## In person

In the foyer of the Queen's Theatre or the Landmark Theatre. Open Monday to Saturday, 10am to 4pm and Sundays, April to October (later on performance nights). Sunday opening subject to seasonal change.

## By telephone

North Devon Theatres Box Office 01271 324242. Open as stated above. Visa, Mastercard, Maestro & Solo accepted. Unpaid reservations held for 3 days.

## By post

North Devon Theatres Box Office, Boutport Street, Barnstaple EX31 1SY. Please include booking requirements and make cheque payable to 'North Devon Theatres Trust'. Add £1 if you would like your tickets posted to you.

## Refunds

Tickets cannot be exchanged or refunded. However we will attempt to re-sell

tickets on any sold-out shows, a charge of 10% is made for this service.

## Show cancellations

Please note that all artists and programmes are subject to change without notice. In the event of a cancellation of a performance we will make every reasonable endeavour to ensure customers are notified wherever possible. North Devon Theatres cannot be held responsible for any consequential loss incurred from such a change.

## Gift vouchers

Gift vouchers are available for purchase from the Box Office and can be used for shows at the Queen's Theatre and Landmark Theatre.

## Special offers

Only one offer applies to any one ticket and must be requested at time of purchase.

## Ticket concessions

(shown in brackets) apply to children, full-time students, claimants of job seekers allowance, over 60s and registered disabled.

## Family ticket

When available applies to a family of 4 with max 2 adults.

## Young person's ticket

On selected performances. Applies to children 16 & under.

## Stand-by tickets

Any remaining unsold seats may be purchased for half the top price either by phone or in person after 6pm on the day of performance. Tickets must be paid for at time of booking. This offer is not available on all shows.

## Young people admissions policy

Infants aged 18 months or under may be held on their parent or guardian's lap with no charge. In the interest of all our customers an infant must remain on the accompanying adult's lap at all times throughout the performance.

*The infant in arms ticket is available for pantomime and all children's events.*

## Unaccompanied children

Unaccompanied children of 12 years and over are welcome at most performances

(except those with an age guidance limit indicated). Customers must ensure that if children are attending without a parent/guardian that they have safe travel to and from the theatre.

*Children aged under 12 must be accompanied by an adult.*

### **Access**

The following information may prove useful if you have specific access requirements; however it is not exhaustive. Please do contact a member of our team if you have any queries. We are happy to assist.

### **Physical access**

There are wheelchair spaces available in the stalls for every performance at the Queen's Theatre, accessed via a ramp from street level. The Gallery Cafe is situated on the first floor and is accessible by lift.

The Landmark Theatre offers wheelchair spaces for all performances. The Theatre, Pavilion and Rendezvous Café are all fully accessible. There is disabled parking on the Wilder

Road car park next to the Landmark at the front of the building.

Both venues have accessible toilet facilities.

### **Minibus group**

If you have a mobility problem, a disability that prevents you from getting out and about or if you do not feel safe driving at night, we now have the North Devon Theatres' Minibus Group. This service is able to pick you up from your home and take you to either the Queen's or Landmark Theatre to see the shows of your choice.

Covering the Woolacombe, Ilfracombe, Combe Martin and Berrynarbor areas, for a small fee, the Ilfracombe Community Transport bus will get you there; see the bus logo on the relevant shows. This season we are hoping to extend the service to include Barnstaple and Bideford.

To register for this service or for any further information please contact Janice Banks on 01271 86 56 55.

### **Hearing impaired**

Both venues are fitted with an infra-red hearing system - please reserve equipment at time of booking.

### **Visually impaired**

Guide dogs are welcome at both Theatres.

For other access requirements or further information please contact the Front of House Manager on 01271 327357 or email [foh.qt@northdevontheatres.org.uk](mailto:foh.qt@northdevontheatres.org.uk)

### **Parking**

There is limited disabled parking at the Queen's Theatre opposite the theatre entrance in Boutport Street and Butchers Row.

### **Shopmobility**

Shopmobility is a scheme which lends manual wheelchairs, powered wheelchairs and powered scooters to members of the public with limited mobility to shop and to visit leisure and commercial facilities within Barnstaple and Ilfracombe. For more information phone 01271 328866 or visit [www.justmobility.co.uk](http://www.justmobility.co.uk).



# Supporting your Theatre

## Sponsor a seat and help support us

North Devon Theatres have created a unique opportunity for you to sponsor a seat at either the Queen's or Landmark Theatres for just £150, for five years.

You will receive a plaque with your chosen inscription attached to the back of the seat of your choice, plus a personalised certificate and priority booking on all shows.

For more details contact the Box Office on 01271 32 42 42

### Business Associates

If you would like to know more about our Business Associate Scheme, wish to hold a seminar at one of our venues or organise a

product launch, we can help.

For information on this or if you wish to advertise in one of our programmes, please contact our sales executive George Hammett on 07974 834291

*North Devon Theatres' Trust is a registered charity and a not-for-profit company limited by guarantee. We can only provide the range of cultural services that we do for North Devon, including our extensive arts education programme, through the support of our funders and the business community. Grateful thanks go to all our supporters.*

Registered Charity number 1027553

blueArrow

Pressplay  
Call Centre



Bear  
Street  
Pharmacy

Barnstaple  
Volkswagen



Babcock Marine



alpha  
cash systems



THE PREMIER SHOPPING DESTINATION  
GREEN  
LANES  
... IN THE VERY HEART OF BARNSTAPLE



just office  
The Business in Office Products

R G P  
Architects Ltd



TOPTOWN  
PRINTERS  
Quality in print naturally



phoenix  
learning and care



NORTH DEVON  
JOURNAL



GATES  
construction consultants



ROCK  
property.eu

aiken  
graphic design & marketing



We would like to express thanks to our Business Associates (shown above) for their continuing support.



JUNE 09

# NORTH DEVON FESTIVAL

30 days in June - over 200 events



We've got it all... world class performers, theatre, fringe, visual arts, literature, sports, music, dance and fayres. Add to that Exmoor, Ruby Country, North Devon's Biosphere Reserve and Areas of Outstanding Natural Beauty, and we must have the best setting a Festival could offer.

Visit the website today and sign up for our regular eNews bulletins.

Full programme available from the Box Office.



*'One of the top 5 UK events' The Times*

[northdevonfestival.org](http://northdevonfestival.org)

Box Office 01271 32 42 42

## Your role can make a difference

We need your help so that we can maintain our theatre buildings and continue to present the best shows. You really can make a difference. We are asking you to add just 50 pence to each ticket you buy to add to our buildings maintenance fighting fund. Last year we spent over £50,000 on the buildings alone. And if you Gift Aid



it, as a charity we can claim an extra 25% from the government at no cost to yourself.

Ask at the Box Office for details and help us continue to provide excellent Theatre for you.

## Book online

Live online booking means you are not restricted to what time of day, or night, that you book your seats.

Our system will allocate seat numbers which you can then confirm.

