

ART TREK 2013

OPEN STUDIOS THROUGHOUT NORTH DEVON
6 TO 21 JULY



SPONSORED BY

NORTH DEVON
Gazette



Blue gallery

Specialist retailers of Art & Craft Materials

Artists Materials Montana Spray Paints
 Ciao Graphic Markers Dylon Dyes
 Beads Fabric Paints
 Pergamano Bob Ross Products
 Encaustic Art Mosaic Tiles

16 Joy Street, Barnstaple, North Devon EX31 1BS
 Telephone: 01271 343536 Fax: 01271 321896

Shop online at: www.bluegallery.co.uk

THE APPLIEDORE CRAFTS COMPANY

The Appledore Crafts Company is one of the leading contemporary craft galleries in the South West

Open Daily 10am to 5pm



5 Bude Steet, Appledore



www.appledorecraftscompany.co.uk

Gorgeous shabby chic country style goodies



Daisy Park

Stockists of: Cath Kidston, Emma Bridgewater, East of India, Pip Studio, Heyland & Whittle, Bronte & Moon
... plus so much more!

Opening times:

Mon - Fri 9.30am - 4.30pm
Weds & Sat 9.30am - 3.00pm

28 Broad Street, South Molton, Devon, EX36 3AQ

www.daisypark.co.uk Tel: 01769 579077



Medina Gallery

Established 40 years



Picture Framing

- Wide selection of mouldings
- Large range of limited & open edition prints & cards

80 Boutport Street, Barnstaple
01271 371 025

Welcome to North Devon's 10th open studios event

Local artists throw open the doors of their homes and studios once again and invite you to talk to them first-hand and see their work in progress.

The studios include galleries, village halls, cafés and homes spread throughout the beautiful North Devon area, much of which lies within the UNESCO Biosphere Reserve, which is also celebrating its 10th anniversary this year. Art Trek is a great way to see or buy interesting artwork, watch demonstrations, take part in workshops and see more of the fantastic coast and countryside which has so inspired our artists.

Art Trek 2013 spans three weekends in July from Saturday 6 to Sunday 21, with many artists opening on additional days throughout the month. Disciplines include painting, textiles, glass, woodcarving, photography, jewellery, printmaking, pottery and multi-media. We are grateful to Stella Levy for her encouragement and co-ordination in getting the artists involved.

The locations and details are listed on pages 14 and 15 of this brochure and you can visit our website at www.ndtt.org.uk/arttrek to find out more information on each artist. If you have any queries relating to the Art Trek 2013 artists, they will always be delighted to hear from you and sometimes, with the more remote venues, it's worth phoning

beforehand to get exact directions and to confirm opening times.

We hope you have a wonderful Art Trek and enjoy discovering the abundance of creative talent in North Devon.

Art Trek is produced by



Funded by



Supported using public funding by

ARTS COUNCIL ENGLAND



Sponsored by



In association with



Access

Art Trek is constantly working to ensure events are accessible to all. Each venue has an access code:

- 1 fully accessible
- 2 good access
- 3 reasonable access
- 4 poor access
- 5 no access
- 6 1 step
- 7 call for advice
- 8 ramp available

Parking

- 1 at venue
- 2 close by
- 3 at public car park
- 4 on street

Other information

- Public footpath nearby
- Cycle path close by
- Children welcome if accompanied by adult
- On a bus route

Please check individual artist entries for opening times and dates. Many artists are happy to show their work to visitors throughout the year, an appointment is advisable, please telephone or email.

Disclaimer

The organisers of this event cannot accept any liability for accidents or injuries sustained by members of the public during their visits to the Art Trek venues, demonstrations and organised events.

Transactions between the public and participating artists are not the responsibility of the event organisers. All details are correct at the time of going to press. It is advisable to check with the artist or venue concerned before visiting.

Please recycle

Printed on 100% renewable resources paper using biodegradable vegetable and soya based inks.

Please recycle or keep this brochure to contact the artists after this event.

QUEEN'S THEATRE

Boutport Street, Barnstaple
EX31 1SY
10am to 4pm



Art Trek

Start your Art Trek journey at the Gallery Café to see a diverse range of work from artists taking part this year. Refreshments are available so you can relax over a cup of tea and slice of cake as you plan your Art Trek.

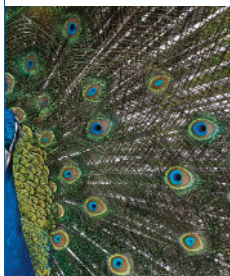
01271 32 42 42

www.northdevontheatres.org.uk

m	t	w	t	f	s	s
					6	7
8	9	10	11	12	13	14
15	16	17	18	19	20	21

LANDMARK THEATRE

Wilder Road, Ilfracombe
EX34 9BZ
10am to 5pm



Jill Denton & Sandy Campbell

Inspired by five photos taken at the intriguing Regency house, Arlington Court, textile artists Jill Denton and Sandy Campbell have teamed up to produce this vibrant and exciting exhibition.

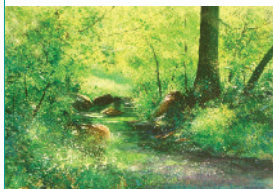
01271 32 42 42

www.northdevontheatres.org.uk

Mon 1 July - Mon 12 August

VENUE 1

St Anne's Centre, Paternoster Row, Barnstaple, EX31 1BH
11am to 4.30pm (10.30am wknds)



Alison Nicholson & Tim Williams

Tim's exhibiting large, splashy watercolours and oils of the North Devon landscape alongside Alison's 2 and 3D textile and mixed media works. Workshops available at £5, suitable for children and adults.

Alison: 01271 321922, Tim: 07905 804787

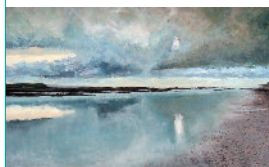
www.alisonnicholsonstextiles.co.uk

www.tim-williams.co.uk

m	t	w	t	f	s	s
					6	7
8	9	10	11	12	13	14
15	16	17	18	19	20	21

VENUE 2

3 Elizabeth Drive, Tower View, Barnstaple, EX31 3AJ
10.30am to 4.30pm



Mike Woollacott

Mike works mainly in acrylics using the North Devon landscape as the basis for his paintings. Working sketchbooks and drawings will also be on display.

Mon 8 July 5pm to 9pm

01271 375887

michael.woollacott@googlemail.com

www.mikewoollacott.co.uk

m	t	w	t	f	s	s
					6	7
8	9	10	11	12	13	14
15	16	17	18	19	20	21

VENUE 3

White Moose Art Gallery, Trinity Street, Barnstaple, EX32 8HX
11am to 7pm



Mark Rochester

Darkly mysterious plein air paintings of Exmoor's hidden streams and valleys. Carrying equipment across moor and rocky outposts, he produces in-situ interpretations of this stunning landscape.

01271 855730

j.markrochester@hotmail.co.uk

www.markrochesterpaintings.co.uk

m	t	w	t	f	s	s
					6	7
8	9	10	11	12	13	14
15	16	17	18	19	20	21

VENUE 4

7 Magnolia Close, Westacott Road, Barnstaple, EX32 8QH
10.30am to 4.30pm



Mark Woollacott

Working mostly in acrylics, Mark creates naturalistic representations of town, countryside and coastline. His work is represented by a number of local galleries.
Sat 6 July 4.30pm to 6pm

01271 378702
mwoollacott@btinternet.com
www.markwoollacott.com

m	t	w	t	f	s	s
					6	7
8	9	10	11	12	13	14
15	16	17	18	19	20	21

VENUE 5

Broomhill Art Hotel & Sculpture Gardens, Muddiford, EX31 4EX
12pm to 3pm



North Devon Arts - Squared

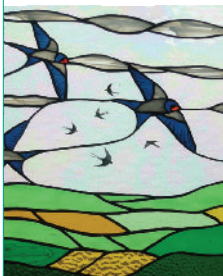
NDA Squared showcases eclectic, affordable work by North Devon artists in a variety of media. Artist demonstrations will take place. Please ring if making a special journey to check Gallery is open.

01271 850262
events@northdevonarts.co.uk
www.northdevonarts.co.uk

m	t	w	t	f	s	s
					6	7
8	9	10	11	12	13	14
15	16	17	18	19	20	21

VENUE 6

Highfield, Guineaford, Marwood, Nr. Barnstaple, EX31 4EA
10.30am to 4.30pm



Carol Edwards

I'm inspired by the glass and countryside to create beautiful mirrors, panels, light catchers and more from art deco to contemporary. Plus handmade scarves, bags and jewellery.
11 & 18 July 4.30pm to 7.30pm

01271 373779
carol@guineaford.co.uk
www.guineafordarts.co.uk

m	t	w	t	f	s	s
					6	7
8	9	10	11	12	13	14
15	16	17	18	19	20	21

VENUE 7

East Barton Farm, Horwood, Nr. Bideford, EX39 4PE
10.30am to 4.30pm



Nigel Eveleigh

Original ceramics, wall hangings, sculpture and installation artworks. Burnished, smoked, woodfired and raku with reclaimed ironwork and oak.
Sat 6 July 4.30pm to 7.30pm

01271 858509
nigel@eveleighceramics.co.uk
www.eveleighceramics.co.uk

m	t	w	t	f	s	s
					6	7
8	9	10	11	12	13	14
15	16	17	18	19	20	21

VENUE 8

Inclendon Cottage Studios, Georgeham, EX33 1JN
10.30am to 4.30pm



Emily Garnham Wright & Don Sibthorpe

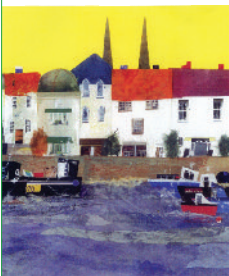
Don Sibthorpe creates tactile porcelain and bronze sculptures inspired by nature. His work compliments and contrasts with Emily Garnham Wright's thread and wire landscapes, watercolours and ink drawings.

01271 890090
www.emilygarnhamwright.co.uk
www.nobodiesnowhere.com

m	t	w	t	f	s	s
					6	7
8	9	10	11	12	13	14
15	16	17	18	19	20	21

VENUE 9

Georgeham Village Hall,
Georgeham
10am to 5pm



Mary Oldham, Alina Ford and Grace Cresswell

Three artists showing in the Village Hall. Their range of work covers most mediums and subjects, including collage, abstract, animals, landscape and floral, plus demonstrations from the artists.

01271 890215
oldhamstreamways@btinternet.com
www.maryoldham.co.uk

m	t	w	t	f	s	s
					6	7
8	9	10	11	12	13	14
15	16	17	18	19	20	21

VENUE 10

St. Merryn, Higher Park Road, Braunton, EX33 2LG

10.30am to 4.30pm



Roselyn Bradford

Paintings in oils, watercolour and acrylic, pen and pastel drawings and papier mâché sculptures. Subjects include landscapes and gardens. Demonstrations will be taking place.

Sat 6 July 4.30pm to 6.30pm

01271 813805
ros@st-merryn.co.uk

m	t	w	t	f	s	s
					6	7
8	9	10	11	12	13	14
15	16	17	18	19	20	21



Paula Newbery

Paula paints and draws in a variety of media, often mixing them. She also makes large-scale constructed textile pieces. Demonstrations will be taking place.

Sat 6 July 4.30pm to 6.30pm

01271 817592
olivia.newbery@virginmedia.com

m	t	w	t	f	s	s
					6	7
8	9	10	11	12	13	14
15	16	17	18	19	20	21



Laura Hudson

Laura trained at Edinburgh, Glasgow and St Martin's School of Art. Her paintings and drawings are conversations in light, shuffled by memory and imagination. Demonstrations will be taking place.

Sat 6 July 4.30pm to 6.30pm

07766 189539
laurahudsonstudio@gmail.com
www.laurahudsonstudio.com

m	t	w	t	f	s	s
					6	7
8	9	10	11	12	13	14
15	16	17	18	19	20	21

VENUE 11

Gallery Jessica Dove, 8 High Street, Ilfracombe, EX34 5DF
10.30am to 4.30pm



Jessica Dove

Ilfracombe born Jessica has exhibited at the Royal Academy Summer Exhibition and works mainly in watercolour as well as some acrylics. She loves landscapes, which often develop into abstracts.

Wed 10 July 4.30pm to 7.30pm

01271 865138
jessicapartymania@yahoo.co.uk

m	t	w	t	f	s	s
					6	7
8	9	10	11	12	13	14
15	16	17	18	19	20	21

VENUE 12

Emmanuel Hall, Wilder Road,
Ilfracombe EX34 9AW
10.30am to 4.30pm



Ilfracombe Art & Craft Society

The gallery exhibits original work from over 40 local artists, including paintings, wood turning, glasswork, fabrics, cards and jewellery. Artists will be on hand to provide demonstrations. 6.30pm to 9.30pm (please ring)

01271 864864
ilfracombeartsociety@hotmail.co.uk
www.ilfracombeartandcraftsociety.co.uk

m	t	w	t	f	s	s
					6	7
8	9	10	11	12	13	14
15	16	17	18	19	20	21

VENUE 13

Shoreline Glass, 86 High Street, Ilfracombe, EX34 9NH
10.30am to 4.30pm



Heather McNeilly

At her studio in the High Street, Heather creates stained glass windows and panels using traditional methods. Her bright and contemporary fused glass is on display and there will be demonstrations of her work.

Fri 12 July 7pm to 9pm

01271 862276
heathermcneillysg@hotmail.com
www.shorelineglass.co.uk

m	t	w	t	f	s	s
					6	7
8	9	10	11	12	13	14
15	16	17	18	19	20	21

VENUE 14

Arlington Court, National Trust House, Arlington, Nr Barnstaple, EX31 4LP
11am to 4.30pm



Deborah Hastings

Embroidery specialist, including goldwork, specialising in rag-rugs and a range of household items made from recycled textiles. Visitors are welcome to 'have a go'. Sunday 21 July, rag-rug demonstrations at Clovelly.

01769 560515
ragrugtextiles@btinternet.com
www.ragrugtextiles.com

m	t	w	t	f	s	s
					6	7
8	9	10	11	12	13	14
15	16	17	18	19	20	21

VENUE 15

Northleigh House, Goodleigh, Nr. Barnstaple, EX32 7NR
10.30am to 4.30pm



Linda Moore

Linda works with wool and cottons to create handwoven wall-hangings, rugs, throws, cushions etc. She uses wool from her own sheep and goats, spinning and dyeing the wool first. Workshops available.

Mon 15 July 7pm to 9pm

01271 321502
andrew.moore777@btinternet.com
www.theweavingway.co.uk

m	t	w	t	f	s	s
					6	7
8	9	10	11	12	13	14
15	16	17	18	19	20	21

Braunton Inn

Tel: 01271 816547

Braunton Inn
Braunton Rd.
Barnstaple



www.facebook.com/Brauntoninn
www.vintageinn.co.uk/thebrauntoninnbarnstaple

Classic dishes
cooked to order

Try our famous
Wednesday Pie Day!

Food served from
12 noon all day, every day

Please book
for the restaurant

In association with:



Creating custom web and mobile
apps for your business.

Also try our free watermarking &
QR code generation tools

www.trideneelite.com

VENUE 16

West Buckland Village Hall, West Buckland, EX32 0SY

10.30am to 4.30pm



Heather Everitt

Beautiful, silk applique and embroidered pictures, cards and accessories. Inspired by nature and Heather's surroundings. Heather will be demonstrating her practice over the weekends.

01598 740351
mail@heatheremb.co.uk
www.heatheremb.co.uk

m	t	w	t	f	s	s
					6	7
8	9	10	11	12	13	14
15	16	17	18	19	20	21



Jan Lye

Jan creates contemporary, functional ceramics inspired by the seashore and Devon landscape. Clay surfaces are carved, stamped or textured and combined with copper and driftwood creating unique pieces.

01805 603306
lye.jan@googlemail.com

m	t	w	t	f	s	s
					6	7
8	9	10	11	12	13	14
15	16	17	18	19	20	21



Sandra Adams

Sandra incorporates texture and colour into her designs, influenced by Devon's rugged coastline. Functional and contemporary pieces made from locally-sourced wood. Demonstrations both weekends.

01598 710684
sjadams_uk@yahoo.co.uk
www.beechtreedesigns.co.uk

m	t	w	t	f	s	s
					6	7
8	9	10	11	12	13	14
15	16	17	18	19	20	21



Karen Adams

Karen designs and hand makes all her jewellery from sterling silver. Simple yet stunning collections incorporating texture and coloured elements into her designs. Karen will be demonstrating during the event.

01237 479175
info@karenadamsjewellery.co.uk
www.karenadamsjewellery.co.uk

m	t	w	t	f	s	s
					6	7
8	9	10	11	12	13	14
15	16	17	18	19	20	21

VENUE 17

Rock Cottage, Parracombe, EX31 4PE

11am to 4.30pm



Kevin Green

Contemporary stoneware pottery with each piece individually thrown and decorated. Work ranges from tiny to large speciality pieces. Makes a perfect gift or to use in your home.

Tues 9 July 6pm to 8pm

01598 763516
kevingreenpottery@hotmail.com

m	t	w	t	f	s	s
					6	7
8	9	10	11	12	13	14
15	16	17	18	19	20	21

Studios and venues are open on the dates shown in **green**, demonstrations on the days shown in **red**, workshops on the days shown in **blue**

The UK's Best Ladies Only Gym as voted by The National Fitness Awards

Call
01271 374594
for info

GO30 NOW OPEN

Fitness workouts for busy lives **Barnstaple**

30 minute workout
is all it takes



"Finally, a gym that fits around my busy life."

I spend all my time juggling life and family time, at last I can now have some ME time even though it is ONLY 30 minutes at GO30. I pop in before looking after my grand-daughter each day. And her mum pops in before picking her up - **perfect!!**

We Guarantee Results*



All you need to do is follow your personal program and attend 3 times a week, then watch the changes take place. *Terms & conditions apply

Scan me to find out more...



Call Us Now to Book a **FREE Trial Visit**

26 Trinity Street, Barnstaple, North Devon EX32 8HX
01271 374594 • info@go30barnstaple.co.uk • www.go30.co.uk

Art Trek display at Arlington Court

2,4,6,11,13,14,16,18,20 July, 11am-3pm

Explore an exhibition by Debbie Hastings of her recycled fabric work, plus step back in time and visit our Regency mansion, collection of carriages, produce and flower gardens and working stables. Free for National Trust members.

Call 01271 850296
www.nationaltrust.org.uk/arlington-court

 National Trust

Registered charity number 205846.



CHAPEL FARM GALLERY

FINE CRAFTS GIFTS

01271 890429

SELF CATERING ACCOMMODATION
BED & BREAKFAST

In the centre of historic Croyde

As the only gallery in the village, we work with between 30 and 40 local artists to provide display and sales space. This gives visitors a chance to view a wide variety of work including: Jewellery, pottery, glasswork, paintings, prints, photography, mirrors and scarves. A memorable visit and a chance to add to a collection.

Fudge toffees, jams and chutneys can also be found.

The gallery is open every day and with our own car park, buy or browse amongst the wide range of unusual gifts we offer.

Through our website, throughout the year, we can offer a wide range of goods and operate a speedy delivery service through our village post office.

VENUE 18

Turret House, 33 Lee Road,
Lynton, EX35 6BS
10.30am to 4.30pm



Sandy Mitchell

I create jewellery to make you stand out from the crowd. Choose your design and size from a palette of 18 colours. Garden Studio only open during Art Trek. Demonstrations will take place.

Thurs 11 July 4.30pm to 7.30pm

01598 753865

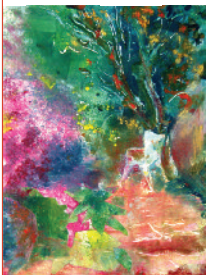
info@sandymitchell.co.uk

www.sandymitchell.co.uk

m	t	w	t	f	s	s
					6	7
8	9	10	11	12	13	14
15	16	17	18	19	20	21

VENUE 19

Weston House, 6 Luke Street,
Bampton, EX16 9NF
10.30am to 4.30pm



Catherine Stott

Catherine's work explores and combines paint media, mosaic, found objects; inspired by nature, gardens, Devon shoreline and by local festivals/music and dance. Comprehensive art workshop programme, details on website.

01398 332094

info@catherinestott.co.uk

www.inspiredbygardens.co.uk

m	t	w	t	f	s	s
					6	7
8	9	10	11	12	13	14
15	16	17	18	19	20	21

VENUE 20

Radley Pottery, Bishops Nympton,
EX36 4PB
10.30am to 4.30pm



Clare Sykes

Organic textural stoneware ceramics for home and garden including bowls, mobiles and mosaics.

Sat 13 July 4.30pm to 7pm

01769 550729

clarepots@yahoo.co.uk

m	t	w	t	f	s	s
					6	7
8	9	10	11	12	13	14
15	16	17	18	19	20	21



Lucy Perry

Illustrator, painting still lives of flowers and vegetables from the gardens I work in. Also colourful scenes inspired by gardens and Exmoor, and character life drawings.

Sat 13 July 4.30pm to 7pm

01598 740 119

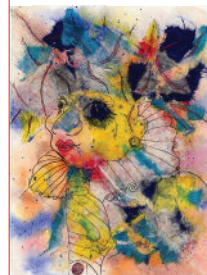
tiluperry@btinternet.com

www.lucyperry.co.uk

m	t	w	t	f	s	s
					6	7
8	9	10	11	12	13	14
15	16	17	18	19	20	21

VENUE 21

South Molton Pannier Market, The
Square, South Molton, EX36 3AB
7.30am to 1pm



Jackie Griffith

I am inspired by North Devon, Vasereley and stained glass. I love using unusual painting tools, combining watercolours with other mediums and making mono-prints with oil pastels.

07814 603627

jgriffith@btpenworld.com

m	t	w	t	f	s	s
					6	7
8	9	10	11	12	13	14
15	16	17	18	19	20	21
					27	

Studios and venues are open on the dates shown in green, demonstrations on the days shown in red, workshops on the days shown in blue

VENUE 22

Carlisle House, Kings Park,
Chulmleigh, EX18 7DJ
10.30am to 4.30pm



Juliet C.F.R.

This versatile 2D artist portrays pets, people, properties, flowers and landscapes. Inspiration from Devon, Sussex, gardens and commissions. Practice work available, fun demonstrations, cards and sales during Art Trek.

Tues 16 July 6pm to 8pm

01769 581399

msjulietcfr.artist@gmail.com

m t w t f s s

					6	7
8	9	10	11	12	13	14
15	16	17	18	19	20	21

VENUE 23

Wixon Cottage, Chulmleigh,
EX18 7DS
10.30am to 4.30pm



John Hurford

Chulmleigh born and self taught, my work in acrylic features wildlife, flowers, growth and decay from my locale. Exhibitions have featured in The Whitney, New York, Liverpool Tate and the Royal Academy.

Thurs 11 July 6pm to 9pm

01769 581844

johnny@johnhurford.co.uk

www.johnhurford.com

m t w t f s s

					6	7
8	9	10	11	12	13	14
15	16	17	18	19	20	21

VENUE 24

Chittlehampton Pottery,
Chittlehampton, EX37 9PX
10.30am to 1pm, 2.15pm to 4.30pm



Roger Cockram

Gallery and studio making individual ceramics based on observations of natural water here in North Devon. Also some kitchen wares, by Roger and paintings and prints by Ros Cockram. See work in progress.

Wed 17 July 4.30pm to 8pm

01769 540420

roger@rogercockram-ceramics.co.uk

www.rogercockram-ceramics.co.uk

m t w t f s s

					6	7
8	9	10	11	12	13	14
15	16	17	18	19	20	21

VENUE 25

Little Bickington Workshops, Cole
Meadow, High Bickington, EX37 9EN
10.30 to 4.30pm



The Tartan Trout Studio

Sarah Brown melts and combines different glass to create stunning bespoke beads in her studio and transforms them into beautiful, unique jewellery and homeware. Demonstrations will be given.

Fri 14 July 6pm to 8.30pm

07780 736907

sarah@thetartantrout.co.uk

www.thetartantrout.co.uk

m t w t f s s

					6	7
8	9	10	11	12	13	14
15	16	17	18	19	20	21

VENUE 26

Hollycot, Umerleigh,
EX37 9AS
10.30am to 4.30pm



Colin Allbrook

A selection of paintings in watercolours and oils often of scenes found in the South West. A painter of national reputation, Colin is a member of the RI and RSMA.

Fri 19 July 4.30pm to 8pm

01769 560041

colin@allbrook.fsbusiness.co.uk

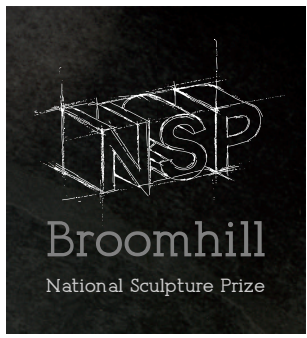
www.colinallbrookartist.co.uk

m t w t f s s

					6	7
8	9	10	11	12	13	14
15	16	17	18	19	20	21



NSP Winner 2012, Graham Guy-Robinson



NSP EXHIBITION

Ten emerging sculptors will be exhibiting their work this Summer, in a bid to win the 2013 NSP title.

Opens June 1st
Mon - Sun, 11am - 4pm

***Restaurant Voucher**

<p><i>Lunch</i> Three-Courses, Wed - Sun £15.95</p>	<p><i>Dinner</i> Three-Courses, Wed - Sat £24.95</p>
---	--

*SAVE £4.50. Meal includes FREE entry to the garden. Valid when pre-booked.

www.broomhillart.co.uk • 01271 850262

Muddiford Rd, Barnstaple, EX31 4EX • 5 minutes from N.Devon Hospital

craftaholics

01769 574 584
81 south street, south molton, devon, ex36 4ag
specialist craft outlet - pop over and see

	paper craft beads acrylic paints hama beads		candle making stamps kids craft poster paints		decopatch mosaic sets canvases decoupage
	sugar craft edible glitter cake tin hire scrap booking		fabric paints fabric pens airfix kits		craftaholics.co.uk



J2M Property Maintenance

a friendly and reliable service

kitchens | bathrooms | showers | bedrooms
painting | decorating | plumbing | tiling

01598 710 680 j2m.property@yahoo.co.uk 07841 347 540



CSCS Registered & Enhanced CRB Checked

ARTISTS

	Page No.	Venue No.		Page No.	Venue No.		Page No.	Venue No.
Sandra Adams woodwork	9	16	Nigel Eveleigh ceramics	5	7	Neil Jeffers painting	20	34
Karen Adams jewellery	9	16	Heather Everitt textiles	9	16	Juliet C.F.R. painting	12	22
Colin Allbrook painting	12	26	Alina Ford painting	6	9	Sally Kelly stained and fused glass	22	39
Paul Anderson woodwork	24	49	Alice Gare glass, ceramics	24	50	Pat King painting, printmaking	23	44
Rose Anderson paintings, prints	24	49	Emily Garnham Wright painting, textiles	5	8	Sarah Jane Lander stoneware	23	43
Artists Collective various	19	30	Kevin Green stoneware	9	17	Philip & Frannie Leach slipware	23	46
Diane Bailey painting	7	14	Jackie Griffith painting, printmaking	11	21	Grizel Luttmann-Johnson bookmaking, drawing	24	48
Sarah Boait photography, sculpture	20	34	Deborah Hastings textiles	7	14	Jay Luttmann-Johnson printmaking	24	48
Sara Bor painting	20	35	Jennie Hale raku, earthenware	19	28	Jan Lye ceramics	9	16
Roselyn Bradford painting	6	10	Sarah Harper textiles, quilting	22	42	Heather McNeilly stained glass	7	13
Clive Brocklehurst painting	23	47	Annabel Hill printmaking	21	36	Richard Meyer painting	19	31
Emily Clark painting	19	29	Duncan Hopkins painting	21	37	Sandy Mitchell jewellery	11	18
Roger Cockram ceramics	12	24	Bill Hudson stained glass	20	33	Linda Moore textiles	7	15
Grace Cresswell collage	6	9	Laura Hudson painting	6	10	North Devon Arts various	5	5
Jessica Dove painting	6	11	Simone Hunt painting	22	40	Paula Newbery painting, textiles	6	10
Lydia Jane Duncan painting, textiles	20	32	John Hurford painting	12	23	Alison Nicholson textiles, mixed media	4	1
Carol Edwards stained glass	5	6	Ifracombe Art & Craft Society various	7	12	Mary Oldham painting	6	9
Eilean Eland ceramics	22	42	Gillie Jackson mixed media	21	36	Celia Olsson painting	19	27
						On The Horizon various	20	35
						Rob Paterson stained glass	20	33
						Lucy Perry painting	11	20
						Marie Porter stained glass	23	45
						Mark Rochester painting	4	3
						Don Sibthorpe ceramics	5	8
						The Square Studio various	21	38
						Vicky Stafford stained glass	23	45
						Catherine Stott painting, mosaics	11	19
						Clare Sykes stoneware	11	20
						The Tartan Trout Studio lampwork	12	25
						West Gallery various	22	41
						David Westcott stoneware	24	50
						Andrew Wheatley photography	21	38
						Tim Williams painting, textiles	4	1
						Mark Woollacott painting	5	4
						Mike Woollacott painting	4	2

For detailed directions on how to find venues, please refer to: www.ndtt.org.uk/arttrek

NORTH DEVON ARTS

43
45 46
49



NATURAL BEAUTY

AREAS OF OUTSTANDING

North Devon's Biosphere Reserve

North Devon's Biosphere Reserve

Ilfracombe 11 12 13

Georgeham 8 9

Braunton 10

Marwood 6

Muddiford 5

Arlington Court 14

Parracombe 17

Lynton & Lynmouth 18

Barnstaple 1

2 3 4

Goodleigh 15

West Buckland 16

Appledore 40

Northam 36 37 38 39

Horwood 7

Bideford 33 34 35

Umberleigh 26

Chittlehampton 24

South Molton 21

Bishops Nympton 20

Bampton 19

44

Clovelly

47 48

42

50 Hartland

33 34 35

Umberleigh 26

High Bickington 25

23

Chulmleigh 22

Little Torrington 29

Langtree 32 30 31 Peters Marland

North Tawton 27

Coryton 28

Waterside Gallery Instow, Devon



Gerald Tozer

Come and visit us beside the beautiful Torridge Estuary and view our Exhibition of work by GERALD & MARY TOZER from 25th May to 4th June.



Mary Tozer



Gerald Tozer

Thereafter a mixed display of work by local artists, potters, jewellers etc.



2 Marine Terrace, Instow, Bideford, Devon EX394HZ
T. 01271-860786 www.watersideart.co.uk

The Commodore Hotel



Instow



Morning Coffee

Light Lunches

Traditional Cream Teas

A Warm Welcome Awaits

Telephone: 01271 860347 Email: admin@commodore-instow.co.uk

Website: commodore-instow.co.uk

Marine Parade, Instow, North Devon, EX39 4JN



YOU GO LARGER WE'LL CHARGE LOWER YOUR ADVERT IN 42,000 COPIES.

**NORTH DEVON
Gazette**

CONTACT
NICOLA CLEMENT
ON 01271 341622

QUOTE CODE
NC/55 2013

6x1
£12.00
30 words
or 20 words
and a photo

Announcements
for all occasions
6x2
£20.00
55 words or 35 words
and a photo

8x2
£25.00
75 words or 50 words
and a photo
All colour and decorated

4x1
£5 1 Week
£8 2 Weeks
£12 3 Weeks
£15 4 Weeks

Selling your car
4x2
£8 1 Week - £14 2 Weeks
£18 3 Weeks - £20 4 Weeks



4x1
£10.00
per week

Rent your property
4x2
£20.00 per week

EMAIL: NICOLA.CLEMENT@ARCHANT.CO.UK

RENDEZVOUS CAFÉ

OPEN FROM 10am - 7 DAYS A WEEK

The Rendezvous Café at the Landmark Theatre in Ilfracombe, offers speciality coffees, teas and pastries available from 10am.

The perfect venue for lunch, offering an imaginative menu and the highest standard of cuisine.

**RELAXED
FAMILY FRIENDLY ATMOSPHERE
SPECTACULAR SEA VIEWS**



MON to SAT 10am to 3pm

On the first floor at the Queen's Theatre in Barnstaple, our bright and modern bistro is ideal for a relaxed morning coffee from our wide selection of fair trade products. Lunchtime menus includes sandwiches, panini and salads.

RELAXED - FAMILY FRIENDLY - STYLISH

MUSEUM OF BARNSTAPLE

TEA ROOM

MON to SAT 10am to 3pm

**Pop in for a coffee and slice of
homemade cake.**

You could also come to our Tea Room regulars:
**Reminiscence Mondays
Crafty Fridays**
and, if you have toddlers, why not bring them to
Kids' Wednesdays



SUPPORT ART TREK

Art Trek is produced by North Devon Theatres' Trust. We are a registered charity responsible for the Queen's Theatre, Barnstaple; Landmark Theatre, Ilfracombe and North Devon Museum. We present a range of theatre, visual arts and heritage events for residents and visitors to our beautiful region. We also run an extensive education and outreach programme that offers over 20,000 places each year to the young and young-at-heart.

Each year we need to raise over £700,000 from donors, sponsors, grant makers and charitable trusts and foundations to make our work possible.

If you have enjoyed Art Trek and would like to make a donation to support our work, please visit our website www.northdevontheatres.org.uk or speak to the Box Office team at either of our theatres.

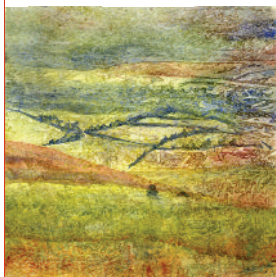


All three venues show diverse exhibitions of local and national artists.
Visit www.northdevontheatres.org.uk for details.



VENUE 27

Little Linhay, Bondleigh,
North Tawton, EX20 2AJ
10.30am to 4.30pm



Celia Olsson

Loose style paintings full of colour and texture reflecting my response to the local landscape. Plus a new series of paintings illustrating a book of my husband's poems.

Fri 12 July 6pm to 8pm

01837 82796
martinolsson827@btinternet.com
www.celiaolssonartist.co.uk

m	t	w	t	f	s	s
					6	7
8	9	10	11	12	13	14
15	16	17	18	19	20	21

VENUE 28

Longham Pottery, Coryton,
Nr. Tavistock, Devon, EX20 4AA



Jennie Hale

Artist /potter living and working in beautiful Lyd Valley. Her work is informed by a fascination with the natural world. Featuring watercolours, decorated Earthenware and raku fired animals and birds.

Sat 13 July 4.30pm to 9pm

01822 860287
jennie@jenniehale.co.uk
www.jenniehale.co.uk

m	t	w	t	f	s	s
					6	7
8	9	10	11	12	13	14
15	16	17	18	19	20	21

VENUE 29

The Old Smithy, Little Torrington,
Torrington, EX38 8PS
10.30am to 4.30pm



Emily Clark

Not just painting: thanks to my obsession with photography and wildlife (especially one small red-breasted inhabitant of my wildlife garden) I'm making art you can wear. It's going for a song.

Fri 19 July 6pm to 8pm

emily_studio@yahoo.co.uk
www.ejc-wildart.co.uk

m	t	w	t	f	s	s
					6	7
8	9	10	11	12	13	14
15	16	17	18	19	20	21

VENUE 30

Yarde Orchard, East Yarde, Peters
Marland, Torrington, EX38 8QA
10.30am to 4.30pm



Artists Collective at Yarde Café

Work from a collective of local artists includes automata, ceramics and landscape photographs. Interesting art, a warm welcome, good food and overnight Yurt accommodation.

Fri 12 July 4.30pm to 10pm

01805 601778
info@yarde-orchard.co.uk
www.yarde-orchard.co.uk

m	t	w	t	f	s	s
					6	7
8	9	10	11	12	13	14
15	16	17	18	19	20	21

VENUE 31

Witsend Cottage, 8 Winswell
Water, Peters Marland, EX38 8QB
10.30am to 4.30pm



Richard Meyer

Vibrant impassioned figurework, still-lives and landscapes. Oils by painter with doctorate in animal behaviour who now finds art more significant than science. Inspiring conversation helped by homemade wine.

Wed 10 July 6pm to 9pm

01805 601120
richardmeyer@lundybay.net
www.meyergallery.co.uk

m	t	w	t	f	s	s
					6	7
8	9	10	11	12	13	14
15	16	17	18	19	20	21

VENUE 32

Stapleton Farm, Langtree,
Torrington, EX38 8NP
10.30am to 4.30pm



Lydia Jane Duncan

Lydia is a North Devon artist and musician. Her colourful and patterned work ranges from landscape, portrait and botanical paintings to prints and textile pieces.

Sat 20 July 4.30pm to 10pm

01805 601532
lydiaduncan294@btinternet.com
www.summerdazecamping.co.uk

m	t	w	t	f	s	s
					6	7
8	9	10	11	12	13	14
15	16	17	18	19	20	21

VENUE 33

Butchers Row, Bideford Pannier
Market, Bideford, EX39 2AN
10.30am to 4.30pm



Bill Hudson & Rob Paterson

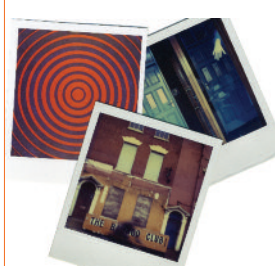
Bill and Rob teach traditional stained glass techniques and also restore, repair and supply stained glass to ecclesiastical and secular buildings. They are both independent traditional stained glass artists.

Bill 07867 958407, Rob 07988 700230
billhudson5595@tiscali.co.uk
rpstainedglass@aol.com

m	t	w	t	f	s	s
					6	7
8	9	10	11	12	13	14
15	16	17	18	19	20	21

VENUE 34

3/4 Torridge View, Meddon
Street, Bideford, EX39 2EG
10.30am to 4.30pm



Sarah Boait & Neil Jeffers

Retro-perspectives; past, present and future represented through Polaroids, photography and salvage sculpture by Sarah. Op art oil paintings by Neil. Discover part of the lost valley of Meddon Street. Search Facebook: Art Of Nit.

01237 479265
neil@abelianart.co.uk
sarah@littlegalleryonthefarm.co.uk

m	t	w	t	f	s	s
					6	7
8	9	10	11	12	13	14
15	16	17	18	19	20	21

VENUE 35

14a Mill St, Bideford, EX39 2JT
10.30am to 4.30pm



On The Horizon Shop & Gallery

Unique range of works by 22 local artists and makers. Gallery features work inspired by the coast - come along and feel swept away to an island for a moment's escapism!

Thurs 18 July 5pm to 9pm

01237 479847
info@shoponthehorizon.com
www.shoponthehorizon.com

m	t	w	t	f	s	s
					6	7
8	9	10	11	12	13	14
15	16	17	18	19	20	21



Sara Bor

A contemporary coastal and landscape painter. Her work is an intuitive response to the coast of Devon and Cornwall and articulates the atmosphere, mood and energy of the ever changing weather conditions.

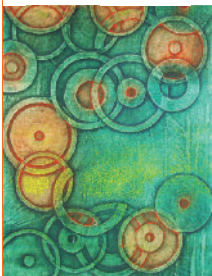
Thurs 18 July 5pm to 9pm

07815 989820
sara.bor@btconnect.com
www.sarabor.co.uk

m	t	w	t	f	s	s
					6	7
8	9	10	11	12	13	14
15	16	17	18	19	20	21

VENUE 36

Wooda Cottage, Wooda Road,
Northam, EX39 1NB
10.30am to 4.30pm



Annabel Hill

Annabel combines traditional printmaking techniques, drawing and painting with digital software to produce highly original monoprints, collographs and textiles, depicting botanical shapes and abstract motifs.

Fri 12 July 6pm to 8pm

01237 476849
annabelhilldesign@hotmail.co.uk
www.annabelhilldesign.co.uk

m	t	w	t	f	s	s
					6	7
8	9	10	11	12	13	14
15	16	17	18	19	20	21



Gillie Jackson

New works capturing vibrancies and vivid contrasts found by layering shapes, colours and tones taken from natural and urban landscapes. Using paint, ink, print, mixed media, photography and digital media.

Fri 12 July 6pm to 8pm

01237 474103
gilliejackson@hotmail.com

m	t	w	t	f	s	s
					6	7
8	9	10	11	12	13	14
15	16	17	18	19	20	21

VENUE 37

8A The Square, Northam,
EX39 1AR
10.30am to 4.30pm



Duncan Hopkins

My primary practice is painting, and I use art to research and communicate ideas and sensations of consciousness, perception and landscape. I am a recent graduate in MA Fine Art.

07576 096064
info@duncanhopkins.net
www.duncanhopkins.net

m	t	w	t	f	s	s
					6	7
8	9	10	11	12	13	14
15	16	17	18	19	20	21

VENUE 38

2 The Square, Northam,
EX39 1AR
10.30am to 4.30pm



The Square Studio

Featuring *We Set Sail At Dawn*, an installation by George Myers, plus photographer Andrew Wheatley, jewellers Mary Myers and Kim Styles, and other local artists including Jeanette Laurence and Mel Saggs. Artists will provide demonstrations.

01237 429412
mary@thesquarestudio.co.uk
www.thesquarestudio.co.uk

m	t	w	t	f	s	s
					6	7
8	9	10	11	12	13	14
15	16	17	18	19	20	21



Andrew Wheatley

I am a landscape photographer living in North Devon, specialising in the landscapes and seascapes of Devon, Cornwall and Somerset.

07974 979965
andrew.wheatley2@googlemail.com
www.andrewwheatleyphotography.com

m	t	w	t	f	s	s
					6	7
8	9	10	11	12	13	14
15	16	17	18	19	20	21

VENUE 39

Kelstar Glass, 75 Richmond Park, Northam, Bideford, EX39 1ES
10.30am to 4.30pm



Sally Kelly

Sally and Dennis enjoy working with different types of glass in many ways, from lead work to fusing, which gives a completely different visual and tactile effect.

Sat 20 July 4.30pm to 7.30pm

01237 479109 or 07973 875417

chillersyd@hotmail.com

www.kelstarglasscraft.com

m	t	w	t	f	s	s
					6	7
8	9	10	11	12	13	14
15	16	17	18	19	20	21

VENUE 40

Docton Court Gallery, 2 Myrtle Street, Appledore, EX39 1PH
10.30am to 4.30pm



Simone Hunt

As well as my seascapes, I am now combining traditional figurative work with abstract elements, and have begun to experiment with various 3D materials, to add another dimension.

Sat 20 July 4.30pm to 7.30pm

01237 475541

simonechristine@btinternet.com

www.simonehunt.co.uk

m	t	w	t	f	s	s
					6	7
8	9	10	11	12	13	14
15	16	17	18	19	20	21

VENUE 41

Glebe Farm Barn, West Putford, Bradworthy, EX22 7XE
10.30am to 4.30pm



West Gallery

Resident artist Rob Walker works in watercolours and oils, he has a twist on the classic with traditional country activities highlighted and depicted in more surreal and spontaneous landscapes.

Tues 16 July 4.30pm to 7pm

01409 241989

info@westgallery.co.uk

www.westgallery.co.uk

m	t	w	t	f	s	s
					6	7
8	9	10	11	12	13	14
15	16	17	18	19	20	21

VENUE 42

Rowan Tree Studio, The Old Granary, Higher Clovelly, EX39 5RR
10.30am to 4.30pm



Sarah Harper

Rowan Tree Studio offers contemporary and traditional sewing & other craft classes. I'm passionate about teaching and creating patchwork quilts and using vintage sewing machines to do it. Daily demonstrations.

Wed 17 July 4.30pm to 8pm

01237 431942

sarah@rowanreestudio.co.uk

www.rowanreestudio.co.uk

m	t	w	t	f	s	s
					6	7
8	9	10	11	12	13	14
15	16	17	18	19	20	21



Eilean Eland

Eilean is a ceramic sculptor. Her Fruiting Bodies are hand-built vessels that contrast containment and growth. Elegant, robust and colourful, they are equally comfortable indoors and in the garden.

Wed 17 July 4.30pm to 8pm

eileaneland@hotmail.co.uk

www.eileaneland.co.uk

m	t	w	t	f	s	s
					6	7
8	9	10	11	12	13	14
15	16	17	18	19	20	21

VENUE 43

39 Fore St, Hartland, EX39 6BE

10.30am to 4.30pm



Sarah Jane Lander

I produce a wide range of thrown stoneware domestic pots decorated with coloured slips and glazes. Traditional and functional forms are decorated with contemporary designs.

Thurs 18 July 4.30pm to 8.30pm

01237 441883

sarah.j.lander@btinternet.com

m	t	w	t	f	s	s
					6	7
8	9	10	11	12	13	14
15	16	17	18	19	20	21

VENUE 44

42 Fore St, Hartland, EX39 6BE

10.30am to 4.30pm



Pat King

Pat is a painter/printmaker working in mixed media. Her landscapes and still life images incorporate print/collograph & etching.

Thurs 18 July 7pm to 8.30pm

07976 941376

patkingstudio@gmail.com

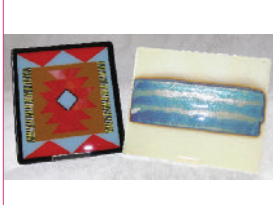
www.patsiekingstudio10.net

m	t	w	t	f	s	s
					6	7
8	9	10	11	12	13	14
15	16	17	18	19	20	21

VENUE 45

H'Art of Glass, 56 Fore Street, Hartland, EX39 6AQ

10.30am to 4.30pm



Marie Porter & Vicky Stafford

H'Art of Glass represents the work of two glass artists offering a bold and often colourful twist using fusing, copper foil work, iridescent and natural materials.

Thurs 18 July 6.30pm to 8.30pm

01237 441662

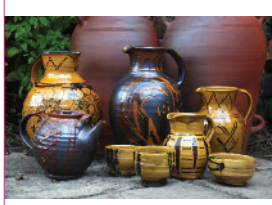
marie@hartlandonline.co.uk

m	t	w	t	f	s	s
					6	7
8	9	10	11	12	13	14
15	16	17	18	19	20	21

VENUE 46

Springfield Pottery, 88 Springfield, Hartland, EX39 6BG

10.30am to 4.30pm



Philip & Frannie Leach

Our work has influences from Japan, Iran and English slipware; it is both modern and traditional. We make tableware and ovenware for everyday use as well as individual pieces. Demonstrations throughout.

Thurs 18 July 4.30pm to 7pm

01237 441506

philip.leacht@virgin.net

www.springfield-pottery.com

m	t	w	t	f	s	s
					6	7
8	9	10	11	12	13	14
15	16	17	18	19	20	21

VENUE 47

White Hare Studio, 67 The Square, Hartland, EX39 6BL

10.30am to 4pm, S&S 11am to 3pm



Clive Brocklehurst

Clive is inspired by the landscape, love and legend creating watercolour paintings and publishing story books. There are also gifts and jewellery all made by Clive and his wife Caroline.

Thurs 18 July 6.30pm to 8.30pm

01237 441539

clive@clivebrocklehurst.com

www.whitehare.co.uk

m	t	w	t	f	s	s
					6	7
8	9	10	11	12	13	14
15	16	17	18	19	20	21

VENUE 48

The Laurels, West St, Hartland,
EX39 6BQ

10.30am to 4.30pm



Grizel and Jay Luttman-Johnson

Griz will be showing her handmade books and some lively prints and drawings, and Jay her intricate hand-painted linocuts. There may be some casual demonstrations of their work.

Thurs 18 July 7pm to 9pm

01237 441761

grizgriz@live.com

www.appledorecraftscompany.co.uk

m	t	w	t	f	s	s
				6	7	
8	9	10	11	12	13	14
15	16	17	18	19	20	21

VENUE 49

104 West Street, Hartland,
EX39 6BQ

10.30am to 4.30pm



Paul & Rose Anderson

Rose is showing paintings and prints inspired by sunshine and the sea. And there'll be examples of Paul's relic oak daybeds to try out, plus quirky raised platters for sale.

Thurs 18 July 7pm to 9pm

01237 441645

paul.anderson25@yahoo.co.uk

www.paulandersonart.co.uk

m	t	w	t	f	s	s
				6	7	
8	9	10	11	12	13	14
15	16	17	18	19	20	21

VENUE 50

Welcombe Pottery, Welcombe,
Hartland, EX39 6HG

10.30am to 4.30pm



Alice Gare & David Westcott

A wide selection of thrown pottery by David Westcott including stoneware, earthenware and raku pots. Hand-built ceramics and kiln-formed glass by Alice Gare, all inspired by the stunning coastal landscape.

01288 331506 or 01288 331134

welcombepottery@hotmail.co.uk

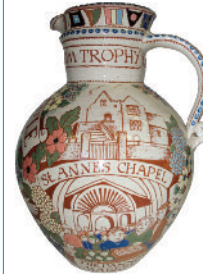
www.welcombepottery.co.uk

m	t	w	t	f	s	s
				6	7	
8	9	10	11	12	13	14
15	16	17	18	19	20	21

Museum of Barnstaple & North Devon

The Square, Barnstaple, EX32 8LN

10am - 5pm Admission Free



Harry Juniper 66 years a potter

A celebration of the life and work of this much loved guardian of the North Devon sgraffito tradition, who draws inspiration for his pieces from his inherent sense of humour and quirky, topical stories.

01271 346747

www.devonmuseums.net/barnstaple

Sat 29 June to Mon 22 July



The Arts of Art

The techniques, tricks and trade of the art world revealed. Look into some of the major developments and how they shaped what and how we paint in this hands-on exhibition by Science Projects Ltd.

Sat 27 July to Fri 6 September

design print web online marketing social media mailing tech

Clevera

more is more.



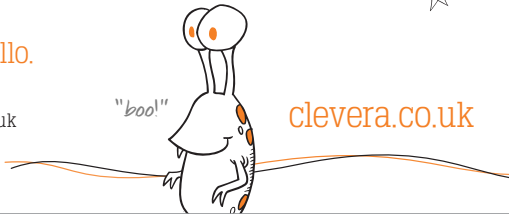
Come say hello.

t 01271 336 275
e hello@clevera.co.uk



"boo!"

clevera.co.uk



St Anne's Arts & Community Centre Paternoster Row, Barnstaple.



Discover
come and learn the fascinating story of this unique Grade I listed building



Events
a programme of live events, exhibitions and workshops



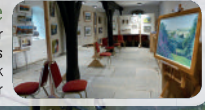
Hire
the perfect town centre venue for parties, receptions and conferences



Volunteer
time to spare, join our friendly team to steward events and lead tours



On Line
watch our virtual tour or follow us on facebook and twitter



Step through the doors of St Anne's and enter a new chapter in its rich history

01271 373311
www.barnstapletowncouncil.co.uk



HOTELS. DINING. BRAVO!

Experience the best of North Devon among six fine hotels and two exciting café bars. The perfect ensemble from Brend Hotels.

The Saunton Sands Hotel
Nr Braunton AA★★★★

The Imperial Hotel
Barnstaple AA★★★★

The Barnstaple Hotel
Barnstaple AA★★★★

**The Royal &
Fortescue Hotel**
Barnstaple AA★★★★

For more information call us on
0800 767574
Or visit www.brendhotels.com



The Park Hotel
Barnstaple AA★★★★

The Royal Hotel
Bideford AA★★★★

Sands on the Beach
Nr Braunton

**62 The Bank Café,
Bar & Bistro**
Barnstaple

The British Hospitality Tourism Award Winner 2009/10

mark rochester

at

white moose

art gallery

trinity st barnstaple ex32 8hx

01271 379872

www.whitemoose.co.uk

I 
Knightshayes

From fine family portraits to Old Master paintings, there is plenty to discover in the grand Victorian house.

Call 01884 254665 for details
nationaltrust.org.uk/knightshayes
National Trust



Experience Art Trek with Stagecoach SOUTH WEST

Use our comprehensive North Devon network to take you to your chosen Art Trek events

North Devon dayrider & megarider

Unlimited travel across North Devon within the boundaries shown

For the latest information on our great value dayrider and megarider tickets visit

www.stagecoachbus.com/southwest



ART TREK OPEN STUDIOS THROUGHOUT NORTH DEVON

