

fringe

theatrefest

20 - 23 June 2013

Barnstaple's Fringe Theatre Festival



www.theatrefest.co.uk

fringe

theatrefest

20 - 23 June 2013

Barnstaple's Fringe Theatre Festival

Now in its 7th year, Fringe TheatreFest is a lively, friendly celebration of theatre in its many and varied forms. With **4 days** of frenzied activity featuring **32 companies** - from around the UK and beyond - it promises to entertain you with over **100 performances** including drama, dance, poetry, music, spoken word and much more.

And it's all made so easy. Everything happens in 3 town centre venues within easy walking distance of each other (plus other locations around Barnstaple town centre...all will be revealed!) and at a price that represents truly extraordinary value. With a Frequent Fringer voucher you can take in 6 shows for just £2.50 a time. So you don't have to stick in your comfort zone. Venture with us deep into the unknown!

Check out the thumbnail sketches of each production and then look us up online for loads more detail.

And then it's time to start planning how you're going to catch each and every one of the shows that grabs your attention!

www.theatrefest.co.uk

The Venues



1
studio@QT, gallery@QT & Room at the Top are in the Queen's Theatre, halfway up Boutport Street, where the central Box Office is also located. The Foyer Bar will be open for drinks and light refreshments throughout Fringe TheatreFest.



2
The Baptist Hall is situated at the Pilton end of Boutport Street – a four minute stroll from the Queen's Theatre. We are grateful for the continued and enthusiastic support of Rev David Hughes and his team.



3
St Anne's Arts & Community Centre is on Paternoster Row, just off Butchers Row and next to St Peter's Church. A short walk from the Queen's Theatre, it is a tiny gothic building and an unusual and atmospheric new venue for this year.

*Room at the Top and Venues X, Y and Z

Ticketing arrangements may vary for shows in these venues - please ask for details.

Free Taster Sessions

Pop into Barnstaple Coffee Shop on the High Street at lunchtime on Wed 19, Thurs 20 or Fri 21 June for a snapshot of the shows on offer.

Tickets & Booking Info

Price per individual show: £5

Concessions, £3 (over 60s, students, under 16s, unemployed, disabled)

Save money and see more

Pay just £15 for a Frequent Fringer Voucher and gain entry to 6 performances of your choice (subject to availability), which works out at an amazing £2.50 each.

Individual show tickets and Frequent Fringer Vouchers can be purchased in advance from the Queen's Theatre in Barnstaple, the Landmark Theatre in Ilfracombe, and participating venues over the Fringe TheatreFest weekend. Individual show tickets will be available on the day of the performance, at the appropriate venue, one hour before the show starts.

Fringe Buttons

Every audience member aged 13+ needs a Fringe Button to enter a venue, available from any of the venues for £1 (only one purchase necessary). The money raised through the sale of Fringe Buttons provides vital funds towards infrastructure costs of Fringe TheatreFest, while 100% of ticket sales goes directly to the performers. Thank you for your support.

Queen's Theatre, Boutport Street, Barnstaple, EX31 1SY
Landmark Theatre, Wilder Road, Ilfracombe, EX34 9BZ

Box Office: 01271 32 42 42

www.northdevontheatres.org.uk



Acknowledgments

Fringe TheatreFest is brought to you by



Funders (through NDT)



Supported using public funding by
ARTS COUNCIL ENGLAND

Sponsor



Accommodation supported by

beafordarts

Supporters



Thanks to St Anne's Arts & Community Centre for use of their venue

A huge thank you to the dedicated team of volunteers without whom Fringe TheatreFest could not function. Fringe TheatreFest is about a whole variety of people and institutions coming together to make something extraordinary happen. And the volunteers are the lifeblood of the whole enterprise. Volunteers supervise the venues, run the venue box offices, help with the technical side, assist with publicity and are the warm and welcoming public face of Fringe TheatreFest.

If you would like to join the team contact us via the website or at ndfringe@hotmail.com

	studio@QT		gallery@QT		The Baptist Hall		St Anne's Arts Centre		Room at the Top*		venue X, Y & Z*	
THURSDAY	4.30	md	4.30	Beowulf							12.00	And Here And There And
	5.30	Scallywags	5.50	Third Time Lucky	5.00	Barum's Secrets & Lies					4.30	1000 Words
					6.45	I think I'm a Feminist	6.00	Nine Parts a Quaker				
	7.15	Come One, Come All!	7.10	Pretentious			7.30	46 Minutes				
	8.30	Will Kempe Nine Daies' Wonder	8.40	High Vis	8.00	The Ice Maiden	8.45	The First Cut				
				9.30	A Father for My Son	9.50	If You Ever Leave Me					
	10.00	Us	10.20	Spectacular Vernacular								
FRIDAY	4.00	The Use of Self	4.00	High Vis	4.15	The Ice Maiden	4.15	Letters from another Island			12.00	And Here And There And
	5.30	Birdhouse	5.40	Pretentious	5.45	A Father for My Son	5.40	Maine Road Blues				
	7.00	Will Kempe Nine Daies' Wonder	7.10	Spectacular Vernacular	7.00	Barum's Secrets & Lies	7.00	We Used To Wait	7.00	The Idea		
	8.30	Us	8.40	Third Time Lucky	8.45	I think I'm a Feminist	8.30	Nine Parts a Quaker	8.00	The Boy Who Fell in Love with the Stars		
									9.00	The Boy Who Fell in Love with the Stars		
	10.00	Scallywags	10.00	Beowulf	10.00	Death of a TV Salesman	10.00	If You Ever Leave Me				
SATURDAY			1.30	Activate An Activist							12.00	And Here And There And
	2.30	Us	2.50	Spectacular Vernacular	2.00	The Show	2.00	If You Ever Leave Me	2.00	The Boy Who Fell in Love with the Stars		
					3.30	A Father for My Son	3.30	The First Cut	3.00	The Idea		
	4.00	Will Kempe Nine Daies' Wonder	4.20	Pretentious	4.45	I think I'm a Feminist	4.35	Nine Parts a Quaker	4.00	The Boy Who Fell in Love with the Stars		
	5.30	Come One, Come All!	5.50	High Vis					5.00	The Idea		
	6.45	Scallywags			6.00	Death of a TV Salesman	6.05	46 Minutes	6.00	The Boy Who Fell in Love with the Stars	6.30	Blue
			7.30	Hour of the Wolf	7.30	The Ice Maiden	7.20	Letters from another Island			7.00	1000 Words
8.30	Birdhouse					8.45	We Used To Wait			8.00	Blue	
		9.00	Activate An Activist	9.00	The Show					9.30	Blue	
	10.00	The Use of Self	10.20	Third Time Lucky			10.15	Maine Road Blues				
SUNDAY			1.00	Hour of the Wolf	1.30	Barum's Secrets & Lies	1.00	The First Cut			1.00	And Here And There And
	2.00	Birdhouse	2.30	Beowulf			2.05	Letters from another Island	2.00	The Boy Who Fell in Love with the Stars	1.00	Blue
	3.30	Come One, Come All!	3.50	Activate An Activist	3.15	Death of a TV Salesman	3.30	We Used To Wait	3.00	The Boy Who Fell in Love with the Stars	3.00	Blue
	4.45	The Use of Self			4.45	The Show			4.00	The Idea		
			5.15	Hour of the Wolf			5.00	Maine Road Blues			5.00	Blue
						6.20	46 Minutes			8.00	1000 Words	



Death of a TV Salesman

L Vital

Vincey Boy sells fake jewellery on TV and lives a life of sordid excesses, manipulation, and falseness...until he has a meeting with death! A fast moving darkly comic tale that explores the darkest recesses of the human psyche. Will Vince survive the show?

physical theatre, comedy age 16+ 50mins
The Baptist Hall
Fri 10pm, Sat 6pm, Sun 3.15pm



Beowulf

Autojeu Theatre

An epic that inspired man's fascination with telling tales, entertaining over a campfire and captivating the imagination. Beowulf, the hero of the Geats, comes to the aid of the King of the Danes in a heroic epic that will live on forever.

drama age 8+ 50mins
gallery@QT
Thurs 4.30pm, Fri 10pm, Sun 2.30pm



Come One, Come All!

Project: Dance!

Come and join Project: Dance! Our showcase will delight and entertain you with a wide variety of performances by a wide variety of people. Spanning the genres from hip-hop to ballroom, via tap, burlesque and rock'n'roll. We hope you'll be dancing in the aisles.

dance, variety age 5+ 45mins
studio@QT
Thurs 7.15pm, Sat 5.30pm, Sun 3.30pm

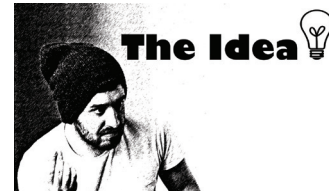


Will Kempe and the Nine Daies' Wonder

Fast Forward Theatre

1600. The Lord Chamberlain's Men's leading clown decides he's had enough of iambic pentameter and fancies a marathon Morris extravaganza. 3 actors and a handcart; 4 Shakespeare's; 36 characters; music; songs; hankies!

musical age 12+ 60mins
studio@QT
Thurs 8.30pm, Fri 7pm, Sat 4pm



The Idea

Autojeu Theatre

'If at first the idea is not absurd, then there is no hope for it' Albert Einstein. Growing from a seed, needing feeding and nurturing, the idea can glow and radiate to infinite possibilities or it can fail. Witness the crash, burn and fail while trying to find the idea.

comedy age 14+ 40mins
Room At The Top
Fri 7pm, Sat 3pm & 5pm, Sun 4pm



The Use of Self

Self Assemble Theatre

Nina has to write a report, however, her distractive behaviour and office nemeses set out to sabotage her chance. A fast paced, highly charged, physical and entertaining account on the quest for personal effectiveness, office survival and cinching a working pen!

physical theatre age 14+ 60mins
studio@QT
Fri 4pm, Sat 10pm, Sun 4.45pm



46 Minutes

The Monday Collective

Three people find common ground through 46 minutes of last summer's Olympics. They miss the glory but excel at the ordinary.

drama age 14+ 46mins
St Anne's Arts Centre
Thurs 7.30pm, Sat 6.05pm, Sun 6.20pm



1000 Words

The Monday Collective

If a picture paints a thousand words, how many pictures does a thousand words paint?

site-specific performance
age 14+ 45mins
Venue Z - various
Thurs 4.30pm - Lilico's
Sat 7pm & Sun 8pm - The Old Bus Station



I Think I'm a Feminist

Worklight Theatre

As men who believe in gender equality, should we describe ourselves as feminists? This work-in-progress explores a vital concern from what sometimes feels like an outsider's perspective.

theatre age 14+ 45mins
The Baptist Hall
Thurs 6.45pm, Fri 8.45pm, Sat 4.45pm



Scallywags

SOOP Theatre

WWII: Facing invasion, Britain's answer is Scallywags - ordinary folk, trained to conceal weapons, dot dashes and, if captured, drink rum. It dares to ask, 'what if the occupation actually happened?'

comedy, drama, history age 14+ 75mins
studio@QT
Thurs 5.30pm, Fri 10pm, Sat 6.45pm



Us

Fear t'Nasty productions

Two under-class youths decide on extreme measures to get themselves some money, but their plan doesn't work quite how they wanted it to.

drama age 16+ 60mins
studio@QT
Thurs 10pm, Fri 8.30pm, Sat 2.30pm



Third Time Lucky

Pidge Productions

Why do we want to make sense of it all? Why do we think the likes of horoscopes and tarot cards will ever help us? Pidge are back and looking to their future.

comedy, drama age 14+ 50mins
gallery@QT
Thurs 5.50pm, Fri 8.40pm, Sat 10.20pm



Activate An Activist

Pilot's Thumb Theatre

A powerful docu-drama exploring the voice of protest through multi-media, movement and theatrical collage, all focused on a strong narrative in which three compelling characters are driven to their tipping point.

docu-drama age 14+ 50mins
gallery@QT
Sat 1.30pm & 9pm, Sun 3.50pm



Nine Parts a Quaker

Plain Quakers

If the 19th century abolished slavery, why are more than 20 million people enslaved today? The work of Thomas Clarkson and others remains unfinished: human trafficking and indentured labour are widespread. Are we complicit? Can two old grumps possibly sort this outrage?

drama age 14+ 60mins
St Anne's Arts Centre
Thurs 6pm, Fri 8.30pm, Sat 4.35pm



If You Ever Leave Me

Kelly Kanayama

Re-interpreting Western folktales from an Asian-Pacific perspective to explore the family ties that bind us, the sacrifices we make in pursuit of a happy ending, and the stories we carry with us whether or not we mean to.

storytelling, theatre age 16+ 60mins
St Anne's Arts Centre
Thurs 9.50pm, Fri 10pm, Sat 2pm

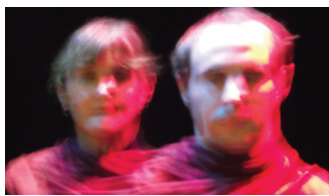


Pretentious

Theo Fraser

Battling existential anxiety through the medium of voice, dance and soliloquy, one man shall ultimately encounter his greatest demon...himself. Step up to the metaphysical mirror and search for the true meaning of identity. Disclaimer: may not be 100% sincere.

comedy age 18+ 50mins
gallery@QT
Thurs 7.10pm, Fri 5.40pm, Sat 4.20pm



The First Cut

outcasttheatre productions

A boy looking for his missing sister encounters an enigmatic woman living alone in a small flat. She suggests he undergo a bizarre treatment combining psychotherapy, confession and past-life regression. They piece together the circumstances of his sister's disappearance.

drama age 16+ 35mins
St Anne's Arts Centre
Thurs 8.45pm, Sat 3.30pm, Sun 1pm



Barum's Secrets and Lies

Entertainingly Different Youth Theatre

Connecting you with Barnstaple's past, uncovering some of the secrets she holds. Adapted from a play by Penny Griffiths this is a powerful piece of storytelling that will intrigue, delight and answer questions like, 'Who were the four Marys' and 'Who was Barnstaple's most famous son?'

drama, physical theatre age 8+ 75mins
The Baptist Hall
Thurs 5pm, Fri 7pm, Sun 1.30pm

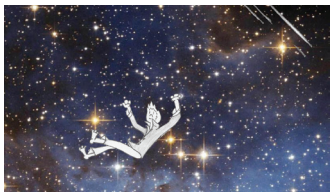


A Father for My Son

Lamerhooe Productions

Kathleen Scott was larger than life. Wanting a son but no husband, she was after the right man. Britain's most famous sculptor before Hepworth, she studied with Rodin, knew Isadora Duncan, nursed refugees in Macedonia, went bare-foot and slept outside when possible. An adventurous Bohemian.

drama age 12+ 45mins
The Baptist Hall
Thurs 9.30pm, Fri 5.45pm, Sat 3.30pm



The Boy Who Fell in Love with the Stars

White Hippos Productions

Remembering a dream he once had as a child, a man takes a journey across the cosmos and discovers a truth long forgotten. An audio-visual treat as interactive images and animation lead to a trip beyond the stars.

comedy, drama, multi-media age 7+ 20mins
Room At The Top
Fri 8pm & 9pm, Sat 2pm, 4pm & 6pm, Sun 2pm & 3pm



Letters from another Island

Almost Human

A work of live filmmaking that follows a group of 20-somethings, musing on their own first world problems and some problems that are very much of another world. Miniature sets, model railways, cardboard cut-outs and old toys: a celebration of the lo-fi, analogue and hand-made.

film as theatre, installation age 16+ 55mins
St Anne's Arts Centre
Fri 4.15pm, Sat 7.20pm, Sun 2.05pm

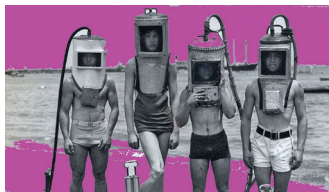


Blue

Touched Theatre

A young woman has vanished without trace. Blue is a powerful interactive performance, reconstructing her story. Close-up puppetry, stunning video design and lyrical writing animate the green in our roots and the blue in our hearts. 'A very beautiful and moving show' Total Theatre.

puppetry, physical theatre, installation age 12+ 60mins
Venue Y - meet at the Baptist Hall
Sat 6.30pm, 8pm & 9.30pm, Sun 1pm, 3pm & 5pm



Spectacular Vernacular goes forth!

Mishmash Productions

Love, silliness and philosophy! 'The poems are full of humour and wit yet thought provoking. This hyperactive ride is dripping with talent and brim-full of creative ideas.' Fringe Secrets 2011. 'Even if poetry isn't your thing you could well be converted.' Fringe Secrets 2010.

performance poetry age 14+ 60mins
gallery@QT
Thurs 10.20pm, Fri 7.10pm, Sat 2.50pm



We Used To Wait

Massive Owl Theatre

Do you remember when this started? Do you remember where you are? Wait, it will come to you. This production explores how online communication and technological advances have affected our experiences and relationship to both time and each other.

devised performance age 14+ 60mins
St Anne's Arts Centre
Fri 7pm, Sat 8.45pm, Sun 3.30pm



High Vis

Robert Cohen's one-man tragicomedy about Quint, a traffic warden under siege. As he shelters reluctantly from an airgun-wielding stalker, Quint will teach you all about traffic management...and much more besides.

comedy, drama age 14+ 70mins
gallery@QT
Thurs 8.40pm, Fri 4pm, Sat 5.50pm



And Here And There And

Mads Floor Andersen
An exploration of movement and settlement in our daily lives.

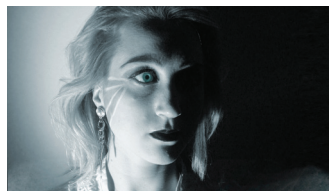
site-specific performance all ages
8hrs (throughout the day)
Venue X - Paternoster Row
Thurs 12pm, Fri 12pm, Sat 12pm, Sun 1pm



Hour of the Wolf

The JQ Studio
At night, during the first anniversary of his loved one's death, a man plagued by insomnia and bouts of fitful unrest, takes a turn for the worse during the Hour of the Wolf.

theatre, song age 14+ 55mins
gallery@QT
Sat 7.30pm, Sun 1pm & 5.15pm



The Ice Maiden

SourDough Theatre
Working from Hans Christian Andersen's original text, we follow a small boy through a world that is both enticing and dangerous. The story is illustrated with shadows, projection, puppetry and live music.

storytelling age 12+ 60mins
The Baptist Hall
Thurs 8pm, Fri 4.15pm, Sat 7.30pm



md

Forches Finest
MD rules her diverse community with fear. Gossip, texting, messaging and argument prevail, threatening her rule. She wants increasingly to control all of her subjects but with little joy...until the arrival of a new form of social communication – md!

drama age 7+ 30mins
studio@QT
Thurs 4.30pm



Birdhouse

Jammy Voo
A surreal comedy horror inspired by Hitchcock's *The Birds*. Four forgotten characters from the film and the only remaining survivors of the bird attack that wiped out the town, take refuge in the Coronet Cinema.

comedy horror age 14+ 60mins
studio@QT
Fri 5.30pm, Sat 8.30pm, Sun 2pm



The Show

Out There Theatre
Have you ever wondered what happens before a show begins? Thought not, but we're going to show you anyway.

drama, comedy age 14+ 40mins
The Baptist Hall
Sat 2pm & 9pm, Sun 4.45pm



Maine Road Blues

Dreamshed Theatre
Find out why a football stadium is more than just a place to a life-long fan. Maine Road may be no more but its impact still burns brightly!

comedy, drama age 12+ 50mins
St Anne's Arts Centre
Fri 5.40pm, Sat 10.15pm, Sun 5pm

www.theatrefest.co.uk

See the website for more information, reviews, videos and links to the companies featured.

Cover image:
Dancer Alex Hocking,
image by Kevin Clifford
in co-production with
The Barbican Theatre,
Trouble and Strife 2012.



Beyond Fringe TheatreFest



Paul Stockman
Sat 13 July, 7.45pm
Landmark Theatre,
Ilfracombe
The popular
TheatreFest 2011/12
performer is back in
North Devon



How to Start a Riot
Thurs 3 Oct, 8pm
studio@QT
Worklight Theatre
bring their
TheatreFest 2012
show back to
Barnstaple



Winston on the Run
Tues 29 Oct, 8pm
studio@QT
The gripping true
story of Winston
Churchill's early
adventures

Plus a full programme of vibrant, cutting edge and diverse productions throughout the year

Visit the website for more information: www.northdevontheatres.org.uk